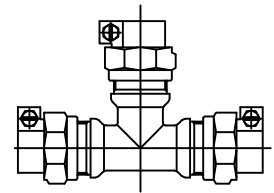


Cambridge Brass
P.O. Box 249
140 Orion Place
Cambridge, Ontario
Canada N1R 5V1
Tel: (519) 621-5520
Fax: (519) 621-8674
<http://www.cambridgebrass.com>

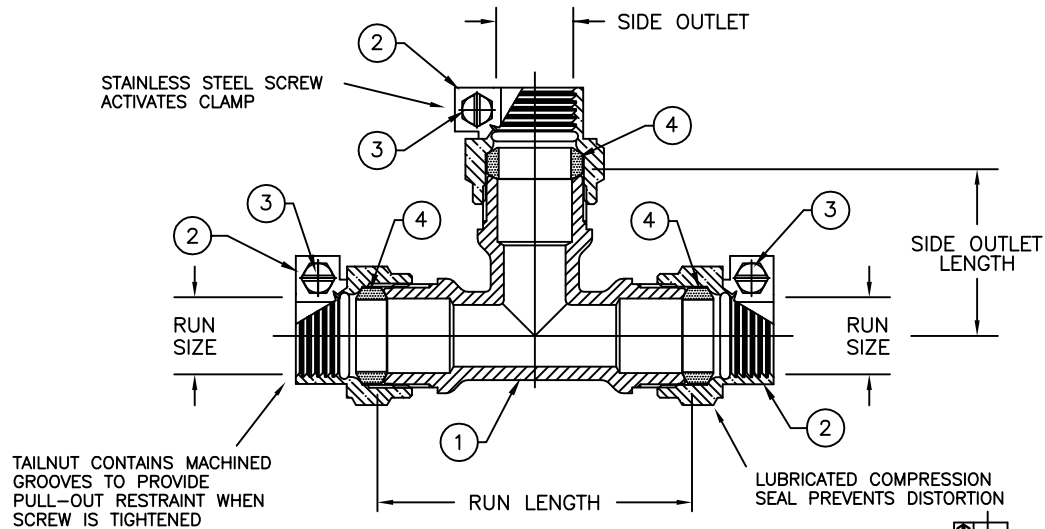


MODEL NO. 150NL

CAMPAK x CAMPAK x CAMPAK

SERVICE TEE

FOR COPPER OR PLASTIC (CTS) TUBING

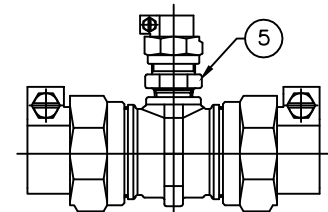


PARTS AND MATERIAL:

1. TEE BODY: CAST BRASS, ALLOY C89833
2. COMPRESSION NUT: CAST BRASS, ALLOY C83600
3. SCREW: STAINLESS STEEL, ALLOY 304
4. COMPRESSION SEAL: NITRILE RUBBER
5. ADAPTER: CAST BRASS, ALLOY C89833

FEATURES:

- CONFORMS TO AWWA C800 (ASTM B584 UNS C89833 FOR ALL BRASS PARTS IN CONTACT WITH POTABLE WATER)
- CONFORMS TO ANSI/NSF 61-8
- CONFORMS TO ANSI/NSF 372 (COMPLIANT WITH US Safe Drinking Water Act. PL 111-380)
- 300PSI WORKING PRESSURE



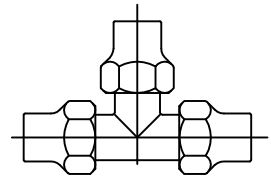
1 1/2" x 1 1/2" x 3/4" CONFIGURATION
2" x 2" x 3/4" CONFIGURATION
2" x 2" x 1" CONFIGURATION

Cambridge Brass considers the information in this submittal form to be correct at the time of publication. Item and option availability, including specifications, are subject to change without notice.

TEE SIZE	CATALOG No.	RUN SIZE (BOTH ENDS)	SIDE OUTLET	RUN LENGTH	SIDE OUTLET LENGTH	APPROX. WT. LBS.
3/4" x 3/4" x 3/4"	150NL-B3B3	3/4"	3/4"	3.66"	1.94"	1.9
3/4" x 3/4" x 1"	150NL-B3B4	3/4"	1"	3.66"	1.94"	2.3
1" x 1" x 1"	150NL-B4B4	1"	1"	4.20"	2.10"	2.7
1 1/2" x 1 1/2" x 3/4"	150NL-B6B3	1 1/2"	3/4"	3.40"	1.42"	4.1
2" x 2" x 3/4"	150NL-B7B3	2"	3/4"	4.16"	2.65"	5.6
2" x 2" x 1"	150NL-B7B4	2"	1"	4.15"	1.60"	5.8
2" x 2" x 2"	150NL-B7B7	2"	2"	7.38"	3.69"	7.0

Submitted by:

Cambridge Brass
P.O. Box 249
140 Orion Place
Cambridge, Ontario
Canada N1R 5V1
Tel: (519) 621-5520
Fax: (519) 621-8674
<http://www.cambridgebrass.com>

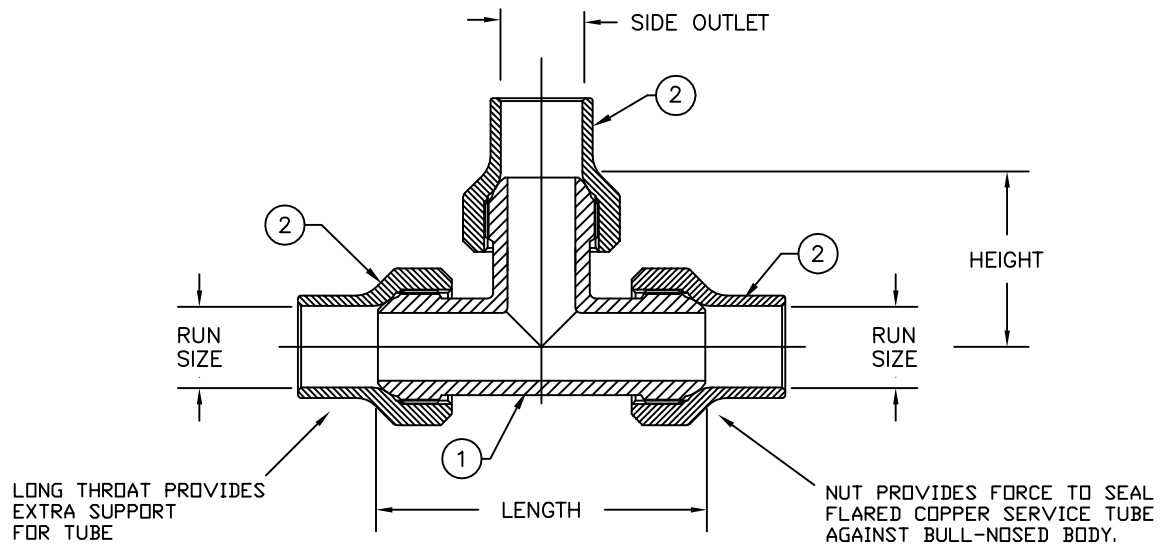


MODEL NO. 150NL

COPPER FLARE x
COPPER FLARE x COPPER FLARE

SERVICE TEE

FOR COPPER TUBING



PARTS AND MATERIAL:

1. TEE BODY: CAST BRASS, CDA ALLOY C89833 "NO LEAD BRASS"
2. NUT: CAST BRASS, ALLOY C83600

FEATURES:

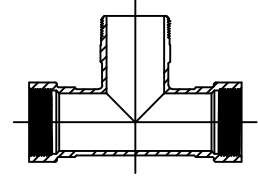
- CONFORMS TO AWWA C800 (ASTM B584 UNS C89833 FOR ALL BRASS PARTS IN CONTACT WITH POTABLE WATER)
- CONFORMS TO ANSI/NSF 61-8
- CONFORMS TO ANSI/NSF 372 (COMPLIANT WITH US Safe Drinking Water Act. PL 111-380)
- 300PSI WORKING PRESSURE

Cambridge Brass considers the information in this submittal form to be correct at the time of publication. Item and option availability, including specifications, are subject to change without notice.

TEE SIZE	CATALOG No.	RUN (BOTH ENDS)	SIDE OUTLET	LENGTH	HEIGHT	APPROX. WT. LBS.
3/4" x 3/4" x 3/4"	150NL-C3C3	3/4"	3/4"	3.62"	1.87"	1.9
1" x 1" x 1"	150NL-C4C4	1"	1"	4.20"	2.10"	2.9

Submitted by:

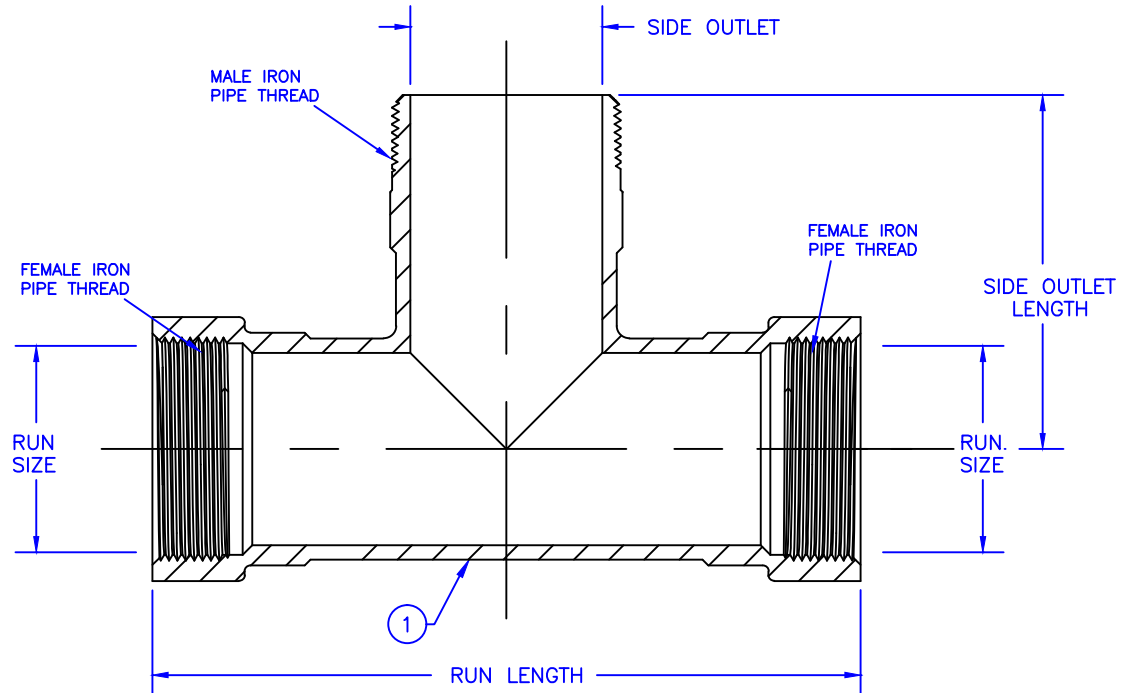
Cambridge Brass
P.O. Box 249
140 Orion Place
Cambridge, Ontario
Canada N1R 5V1
Tel: (519) 621-5520
Fax: (519) 621-8674
<http://www.cambridgebrass.com>



MODEL NO. 150NL

FEMALE IRON PIPE x FEMALE IRON PIPE x
MALE IRON PIPE

SERVICE TEE



PARTS AND MATERIAL:

1. TEE BODY: CAST BRASS, ALLOY C89833

FEATURES:

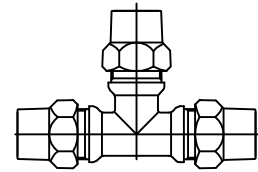
- CONFORMS TO AWWA C800 (ASTM B584 UNS C89833 FOR ALL BRASS PARTS IN CONTACT WITH POTABLE WATER)
- CONFORMS TO ANSI/NSF 61-8
- CONFORMS TO ANSI/NSF 372 (COMPLIANT WITH US Safe Drinking Water Act. PL 111-380)
- 300PSI WORKING PRESSURE

Cambridge Brass considers the information in this submittal form to be correct at the time of publication. Item and option availability, including specifications, are subject to change without notice.

TEE SIZE	CATALOG NO.	RUN FIP (BOTH ENDS)	SIDE OUTLET MIP	RUN LENGTH	SIDE OUTLET LENGTH	APPROX. WT. LBS.
2"	150NL-F7M7	2"	2"	7.38"	3.69"	3.7

Submitted by:

Cambridge Brass
P.O. Box 249
140 Orion Place
Cambridge, Ontario
Canada N1R 5V1
Tel: (519) 621-5520
Fax: (519) 621-8674
<http://www.cambridgebrass.com>

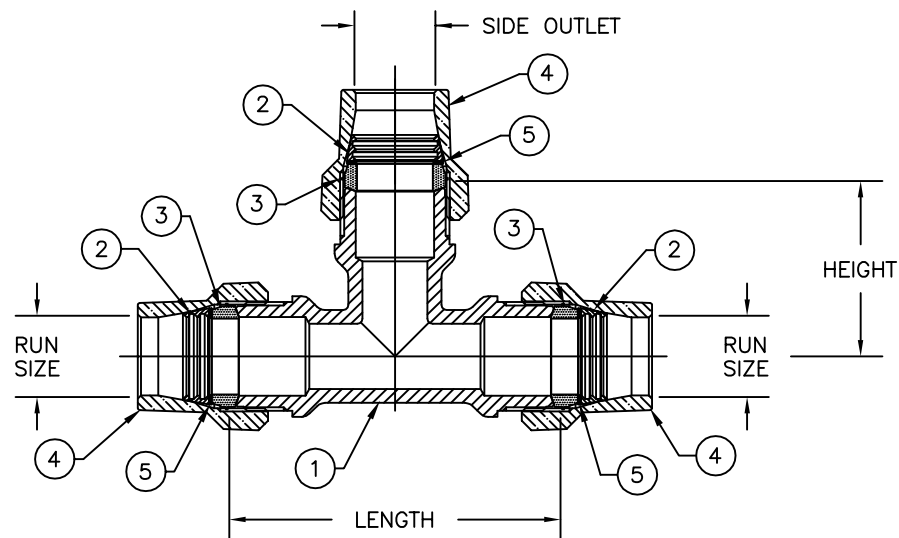


MODEL NO. 150NL

GRIP JOINT x GRIP JOINT x GRIP JOINT

SERVICE TEE

FOR COPPER OR PLASTIC (CTS) TUBING



PARTS AND MATERIAL:

1. TEE BODY: CAST BRASS, CDA ALLOY C89833 "NO LEAD BRASS"
2. GRIPPER: BRASS, ALLOY C26000
3. GASKET: NITRILE RUBBER
4. COMPRESSION NUT: CAST BRASS, ALLOY C83600
5. WASHER: POLYETHYLENE

FEATURES:

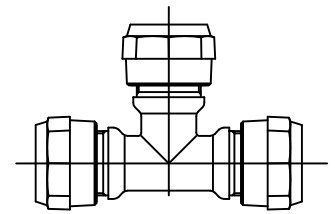
- CONFORMS TO AWWA C800 (ASTM B584 UNS C89833 FOR ALL BRASS PARTS IN CONTACT WITH POTABLE WATER)
- CONFORMS TO ANSI/NSF 61-8
- CONFORMS TO ANSI/NSF 372 (COMPLIANT WITH US Safe Drinking Water Act. PL 111-380)
- 300PSI WORKING PRESSURE

Cambridge Brass considers the information in this submittal form to be correct at the time of publication. Item and option availability, including specifications, are subject to change without notice.

TEE SIZE	CATALOG NO.	RUN GRIP JOINT (BOTH ENDS)	SIDE OUTLET GRIP JOINT	LENGTH	HEIGHT	APPROX. WT. LBS.
3/4"x 3/4"x 3/4"	150NL-GJ3GJ3	3/4"	3/4"	3.66"	1.94"	1.9
3/4"x 3/4"x 1"	150NL-GJ3GJ4	3/4"	1"	3.66"	1.94"	2.3
1"x 1"x 1"	150NL-GJ4GJ4	1"	1"	4.20"	2.10"	2.7

Submitted by:

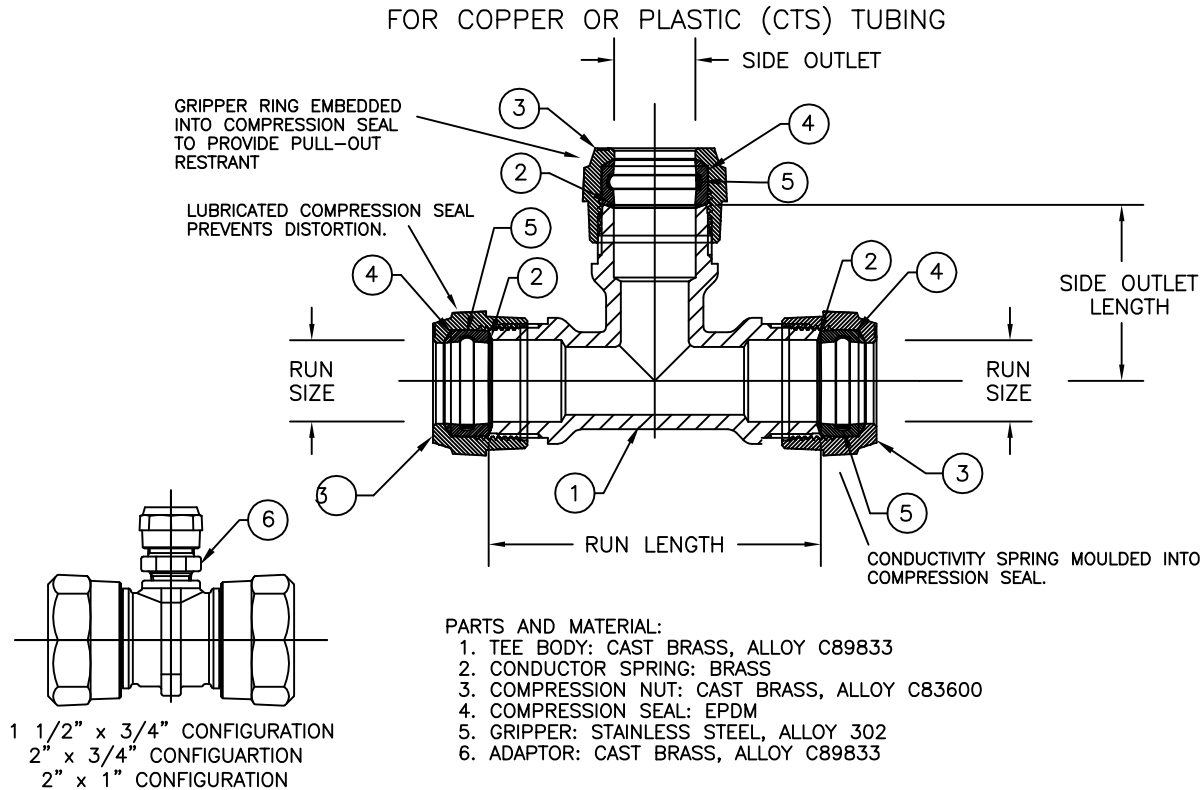
Cambridge Brass
P.O. Box 249
140 Orion Place
Cambridge, Ontario
Canada N1R 5V1
Tel: (519) 621-5520
Fax: (519) 621-8674
<http://www.cambridgebrass.com>



MODEL NO. 150NL

CB COMPRESSION x CB COMPRESSION
x CB COMPRESSION

SERVICE TEE



FEATURES:

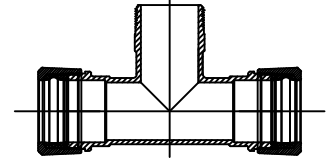
- CONFORMS TO AWWA C800 (ASTM B584 UNS C89833 FOR ALL BRASS PARTS IN CONTACT WITH POTABLE WATER)
- CONFORMS TO ANSI/NSF 61-8
- CONFORMS TO ANSI/NSF 372 (COMPLIANT WITH US Safe Drinking Water Act. PL 111-380)
- 300PSI WORKING PRESSURE

Cambridge Brass considers the information in this submittal form to be correct at the time of publication. Item and option availability, including specifications, are subject to change without notice.

TEE SIZE	CATALOG NO.	RUN CB COMP. (BOTH ENDS)	SIDE OUTLET CB COMP.	RUN LENGTH	SIDE OUTLET LENGTH	APPROX. WT. LBS.
3/4"	150NL-H3H3	3/4"	3/4"	3.66"	1.96"	1.9
3/4" x 1"	150NL-H3H4	3/4"	1"	3.66"	1.94"	2.3
1" x 3/4"	150NL-H4H3	1"	3/4"	4.20"	3.70"	3.1
1"	150NL-H4H4	1"	1"	4.20"	2.10"	2.9
1 1/2" x 3/4"	150NL-H6H3	1 1/2"	3/4"	3.40"	2.60"	4.0
1 1/2"	150NL-H6H6	1 1/2"	1 1/2"	4.75"	2.38"	4.4
2" x 3/4"	150NL-H7H3	2"	3/4"	4.15"	2.65"	5.2
2" x 1"	150NL-H7H4	2"	1"	4.15"	3.00"	5.6
2"	150NL-H7H7	2"	2"	7.38"	3.69"	6.9

Submitted by:

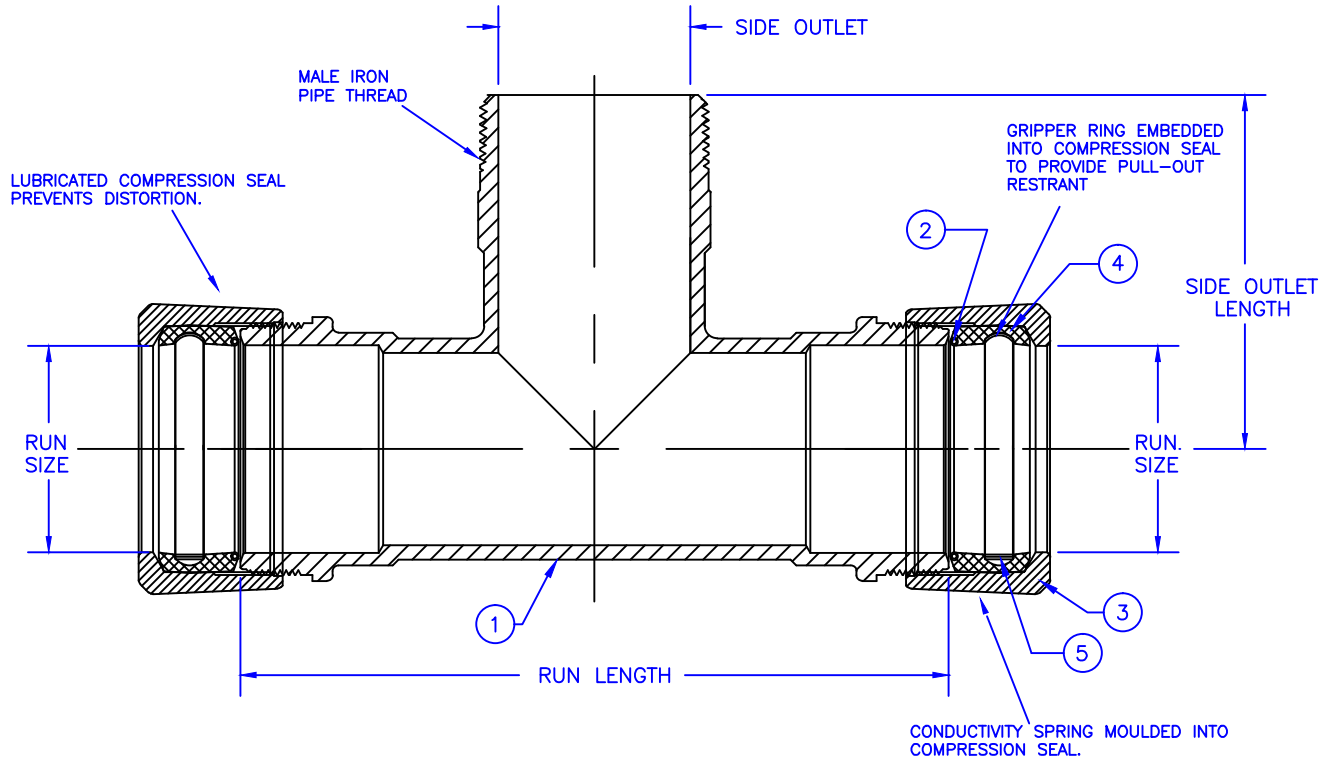
Cambridge Brass
P.O. Box 249
140 Orion Place
Cambridge, Ontario
Canada N1R 5V1
Tel: (519) 621-5520
Fax: (519) 621-8674
<http://www.cambridgebrass.com>



MODEL NO. 150NL

CB COMPRESSION x CB COMPRESSION x
MALE IRON PIPE

SERVICE TEE



PARTS AND MATERIAL:

1. TEE BODY: CAST BRASS, ALLOY C89833
2. CONDUCTOR SPRING: BRASS
3. COMPRESSION NUT: CAST BRASS, ALLOY C83600
4. COMPRESSION SEAL: EPDM
5. GRIPPER: STAINLESS STEEL, ALLOY 302

FEATURES:

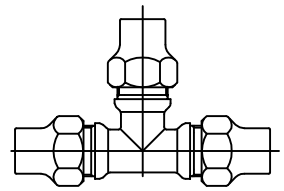
- CONFORMS TO AWWA C800 (ASTM B584 UNS C89833 FOR ALL BRASS PARTS IN CONTACT WITH POTABLE WATER)
- CONFORMS TO ANSI/NSF 61-8
- CONFORMS TO ANSI/NSF 372 (COMPLIANT WITH US Safe Drinking Water Act. PL 111-380)
- 300PSI WORKING PRESSURE

Cambridge Brass considers the information in this submittal form to be correct at the time of publication. Item and option availability, including specifications, are subject to change without notice.

TEE SIZE	CATALOG NO.	RUN CB COMP. (BOTH ENDS)	SIDE OUTLET MIP	RUN LENGTH	SIDE OUTLET LENGTH	APPROX. WT. LBS.
2"	150NL-H7M7	2"	2"	7.38"	3.69"	5.9

Submitted by:

Cambridge Brass
P.O. Box 249
140 Orion Place
Cambridge, Ontario
Canada N1R 5V1
Tel: (519) 621-5520
Fax: (519) 621-8674
<http://www.cambridgebrass.com>

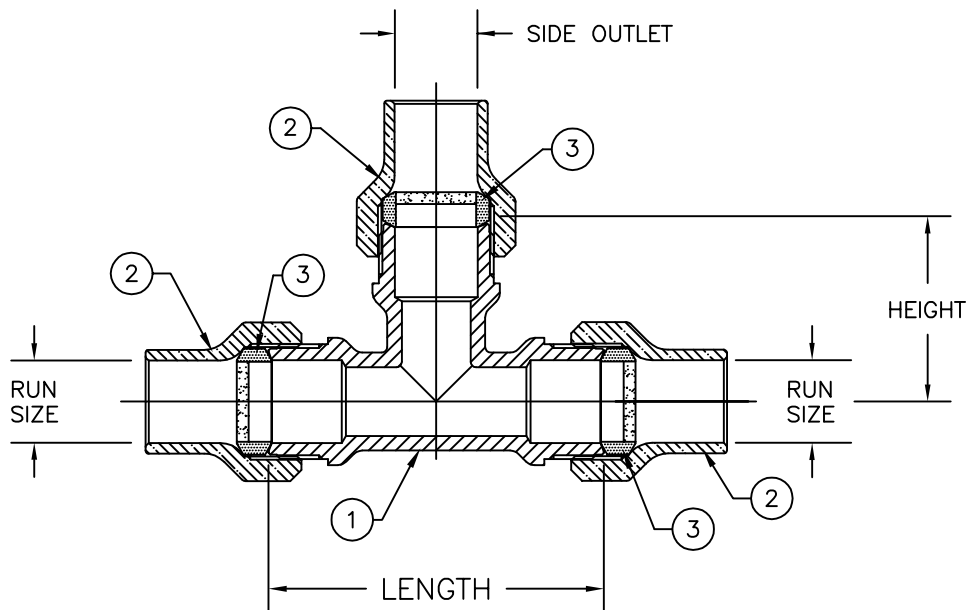


MODEL NO. 150NL

HAYSTITE x HAYSTITE x HAYSTITE

SERVICE TEE

FOR COPPER OR PLASTIC (CTS) TUBING



PARTS AND MATERIAL:

1. TEE BODY: CAST BRASS, CDA ALLOY C89833 "NO LEAD BRASS"
2. COMPRESSION NUT: CAST BRASS, ALLOY C83600
3. COMPRESSION SEAL: NITRILE RUBBER, WITH GRIT

FEATURES:

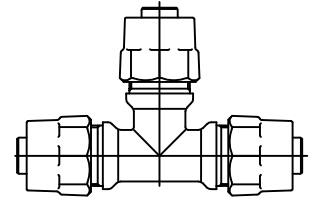
- CONFORMS TO AWWA C800 (ASTM B584 UNS C89833 FOR ALL BRASS PARTS IN CONTACT WITH POTABLE WATER)
- CONFORMS TO ANSI/NSF 61-8
- CONFORMS TO ANSI/NSF 372 (COMPLIANT WITH US Safe Drinking Water Act. PL 111-380)
- 300PSI WORKING PRESSURE

Cambridge Brass considers the information in this submittal form to be correct at the time of publication. Item and option availability, including specifications, are subject to change without notice.

TEE SIZE	CATALOG NO.	RUN HAYSTITE (BOTH ENDS)	SIDE OUTLET HAYSTITE	LENGTH	HEIGHT	APPROX. WT. LBS.
3/4"x 3/4"x 3/4"	150NL-J3J3	3/4"	3/4"	3.66"	1.96"	1.9
3/4"x 3/4"x 1"	150NL-J3J4	3/4"	1"	3.66"	1.94"	3.2
1"x 1"x 1"	150NL-J4J4	1"	1"	4.20"	2.10"	3.3

Submitted by:

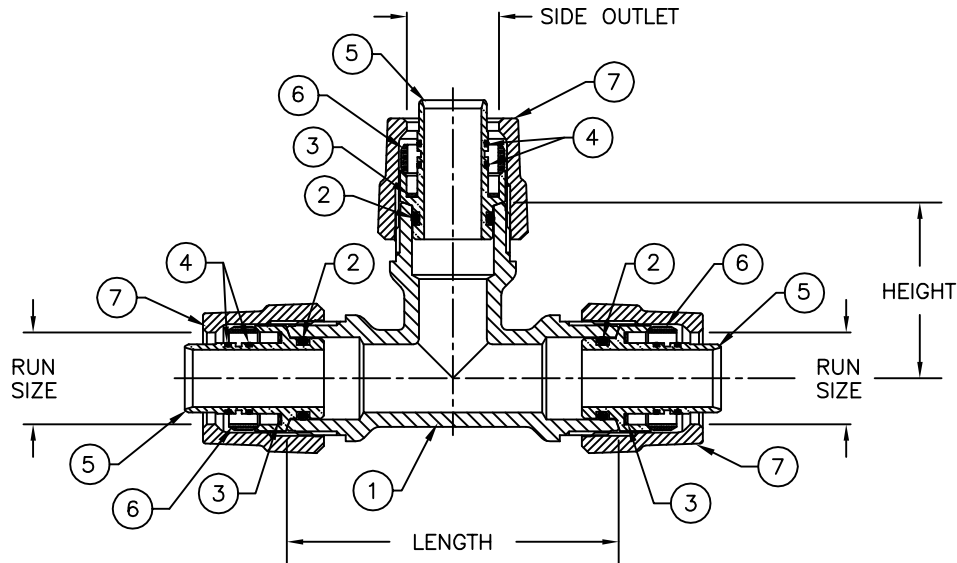
Cambridge Brass
P.O. Box 249
140 Orion Place
Cambridge, Ontario
Canada N1R 5V1
Tel: (519) 621-5520
Fax: (519) 621-8674
<http://www.cambridgebrass.com>



MODEL NO. 150NL

KITEC x KITEC x KITEC

SERVICE TEE



PARTS AND MATERIAL:

1. TEE BODY: NO LEAD CAST BRASS, ALLOY C89833
2. O-RING: NITRILE RUBBER
3. INSULATOR: POLYETHYLENE
4. O-RING: NITRILE RUBBER
5. INSERT: NO LEAD CAST BRASS, ALLOY C89833
6. GRIPPER: BRASS, ALLOY C51000
7. KITEC NUT: CAST BRASS, ALLOY C83600

FEATURES:

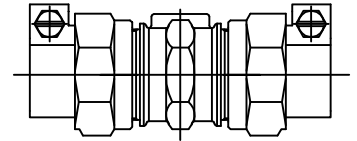
- CONFORMS TO AWWA C800 (ASTM B584 UNS C89833 FOR ALL BRASS PARTS IN CONTACT WITH POTABLE WATER)
- CONFORMS TO ANSI/NSF 61-8
- CONFORMS TO ANSI/NSF 372 (COMPLIANT WITH US Safe Drinking Water Act. PL 111-380)
- 300PSI WORKING PRESSURE

Cambridge Brass considers the information in this submittal form to be correct at the time of publication. Item and option availability, including specifications, are subject to change without notice.

TEE SIZE	CATALOG NO.	RUN KITEC (BOTH ENDS)	SIDE OUTLET KITEC	LENGTH	HEIGHT	APPROX. WT. LBS.
3/4"x 3/4"x 3/4"	150NL-K3K3	3/4"	3/4"	3.66"	1.96"	2.1
3/4"x 3/4"x 1"	150NL-K3K4	3/4"	1"	3.66"	1.94"	2.4
1"x 1"x 1"	150NL-K4K4	1"	1"	4.20"	2.10"	3.5

Submitted by:

Cambridge Brass
P.O. Box 249
140 Orion Place
Cambridge, Ontario
Canada N1R 5V1
Tel: (519) 621-5520
Fax: (519) 621-8674
<http://www.cambridgebrass.com>

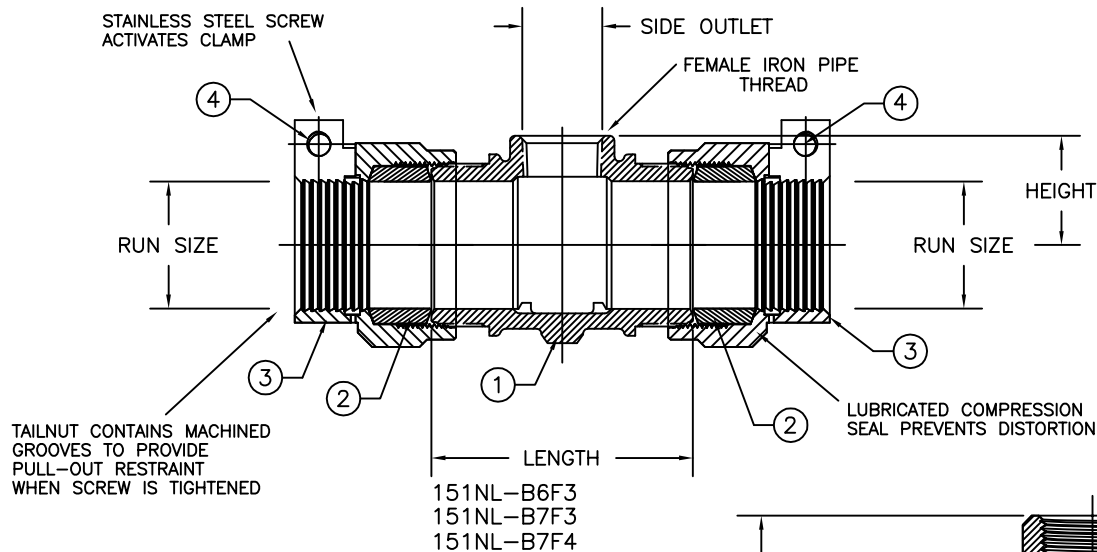


MODEL NO. 151NL

CAMPAK x CAMPAK x FEMALE IRON PIPE

SERVICE TEE

FOR COPPER OR PLASTIC (CTS) TUBING BY THREADED PIPE OUTLET

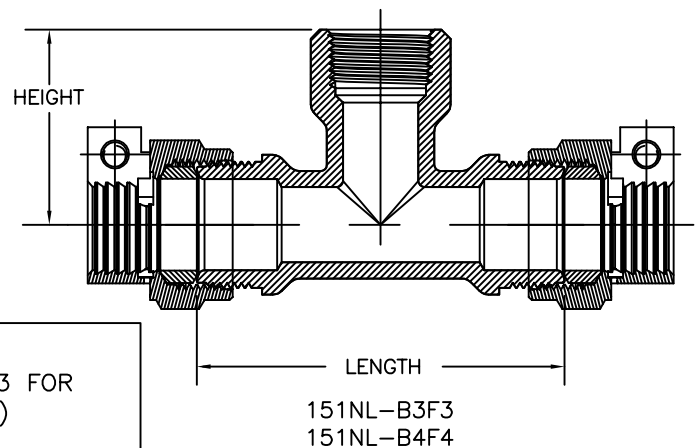


PARTS AND MATERIAL:

1. TEE BODY: CAST BRASS, ALLOY C89833
2. COMPRESSION SEAL: EPDM
3. CAMPAK NUT: CAST BRASS, ALLOY C83600
4. SCREW: STAINLESS STEEL, ALLOY 304

FEATURES:

- CONFORMS TO AWWA C800 (ASTM B584 UNS C89833 FOR ALL BRASS PARTS IN CONTACT WITH POTABLE WATER)
- CONFORMS TO ANSI/NSF 61-8
- CONFORMS TO ANSI/NSF 372 (COMPLIANT WITH US Safe Drinking Water Act. PL 111-380)
- 300PSI WORKING PRESSURE

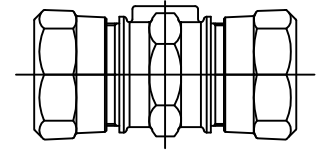


Cambridge Brass considers the information in this submittal form to be correct at the time of publication. Item and option availability, including specifications, are subject to change without notice.

TEE SIZE	CATALOG No.	RUN SIZE CAMPAK	SIDE OUTLET F.I.P.	LENGTH	HEIGHT	APPROX. WT. LBS.
3/4" x 3/4"	151NL-B3F3	3/4"	3/4"	3.66"	1.94"	1.3
1" x 1"	151NL-B4F4	1"	1"	4.20"	2.10"	2.4
1 1/2" x 3/4"	151NL-B6F3	1 1/2"	3/4"	3.40"	1.42"	5.7
2" x 3/4"	151NL-B7F3	2"	3/4"	4.16"	1.60"	8.5
2" x 1"	151NL-B7F4	2"	1"	4.16"	1.60"	6.0

Submitted by:

Cambridge Brass
P.O. Box 249
140 Orion Place
Cambridge, Ontario
Canada N1R 5V1
Tel: (519) 621-5520
Fax: (519) 621-8674
<http://www.cambridgebrass.com>

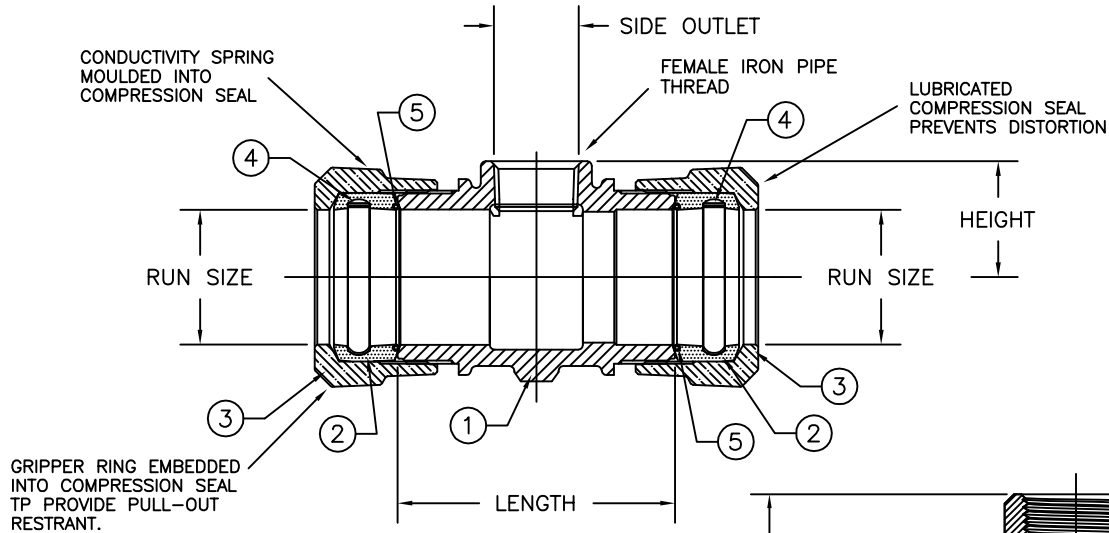


MODEL NO. 151NL

CB COMPRESSION x CB COMPRESSION
x FEMALE IRON PIPE

SERVICE TEE

FOR COPPER OR PLASTIC (CTS) TUBING BY THREADED PIPE OUTLET

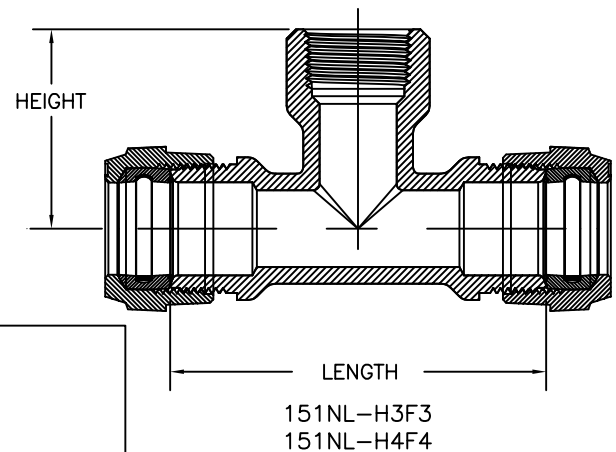


PARTS AND MATERIAL:

1. TEE BODY: CAST BRASS, ALLOY C89833
2. COMPRESSION SEAL: EPDM
3. COMPRESSION NUT: CAST BRASS, ALLOY C83600
4. GRIPPER: STAINLESS STEEL, ALLOY 302
5. CONDUCTOR SPRING: BRASS

FEATURES:

- MANUFACTURED IN COMPLIANCE WITH AWWA STANDARD C800 (ASTM B-62 AND ASTM B-584, UNS NO C83600-85-5-5-5).
- 300PSI WORKING PRESSURE
- NO LEAD PARTS CONFORM TO ANSI/NSF 61-8
- NO LEAD PARTS CONFORM TO ANSI/NSF 372 (COMPLIANT WITH US Safe Drinking Water Act. PL 111-380)



Cambridge Brass considers the information in this submittal form to be correct at the time of publication. Item and option availability, including specifications, are subject to change without notice.

TEE SIZE	CATALOG No.	RUN SIZE CAMPAK	SIDE OUTLET F.I.P.	LENGTH	HEIGHT	APPROX. WT. LBS.
3/4" x 3/4"	151NL-B3F3	3/4"	3/4"	3.66"	1.94"	1.3
1" x 1"	151NL-B4F4	1"	1"	4.20"	2.10"	2.4
1 1/2" x 3/4"	151NL-H6F3	1 1/2"	3/4"	3.40"	1.42"	3.3
2" x 3/4"	151NL-H7F3	2"	3/4"	4.16"	1.60"	4.6
2" x 1"	151NL-H7F4	2"	1"	4.16"	1.60"	6.0

Submitted by: