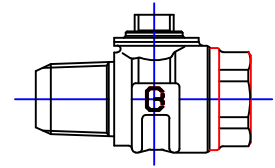


Cambridge Brass
P.O. Box 249
140 Orion Place
Cambridge, Ontario
Canada N1R 5V1
Tel: (519) 621-5520
Fax: (519) 621-8674
<http://www.cambridgebrass.com>

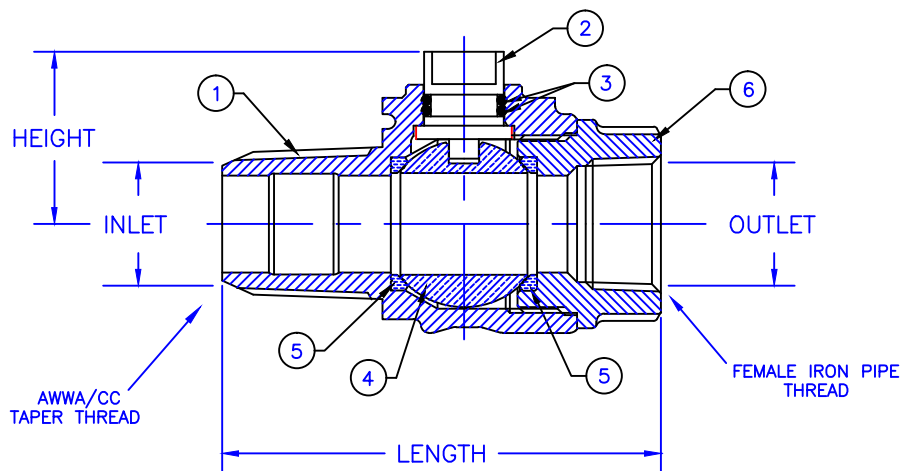


MODEL NO. 301

AWWA (CC) x FEMALE IRON PIPE

CORPORATION MAIN STOP
BALL STYLE

AWWA/CC TAPER THREAD INLET BY FEMALE IRON PIPE OUTLET



PARTS AND MATERIAL:

1. VALVE BODY: CAST BRASS, ALLOY C83600
2. STEM: STAINLESS STEEL, TYPE 303
3. O-RING: NITRILE RUBBER
4. BALL: CAST BRASS, ALLOY C89833
5. SEATS: TEFLON
6. ENDBODY: CAST BRASS, ALLOY C83600

FEATURES:

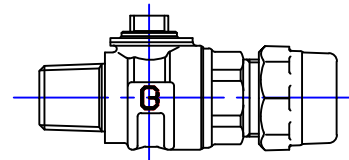
- MANUFACTURED IN COMPLIANCE WITH AWWA STANDARD C800-05 (ASTM B-584, UNS NO C89833).
- CONFORMS TO ANSI/NSF 61-8
- CONFORMS TO ANSI/NSF 372 (COMPLIANT WITH US Safe Drinking Water Act, PL 111-380)
- BLOWOUT PROOF DESIGN.
- 300 PSI WORKING PRESSURE.
- BODY PROVIDES LARGE, RUGGED FLATS FOR PROPER INSTALLATION.
- FULL 360 DEGREE ROTATION.

Cambridge Brass considers the information in this submittal form to be correct at the time of publication. Item and option availability, including specifications, are subject to change without notice.

VALVE SIZE IN	CATALOG NO.	INLET AWWA (CC) IN(mm)	OUTLET F.J.P. IN(mm)	LENGTH IN(mm)	HEIGHT IN(mm)	APPROX. WEIGHT LBS.(kg)
3/4"	301NL-A3F3	3/4"(19)	3/4"(19)	3.40"(86)	1.33"(34)	
1"	301NL-A4F4	1"(25)	1"(25)	3.84"(98)	1.51"(38)	2.0(0.91)
1 1/4"	301NL-A5F5	1 1/4"(32)	1 1/4"(32)	5.40"(137)	2.17"(55)	5.8(14.73)
1 1/2"	301NL-A6F6	1 1/2"(38)	1 1/2"(38)	5.52"(140)	2.17"(55)	6.0(15.24)
2"	301NL-A7F7	2"(51)	2"(51)	5.81"(148)	2.47"(63)	8.7(20.32)

Submitted by:

Cambridge Brass
P.O. Box 249
140 Orion Place
Cambridge, Ontario
Canada N1R 5V1
Tel: (519) 621-5520
Fax: (519) 621-8674
<http://www.cambridgebrass.com>

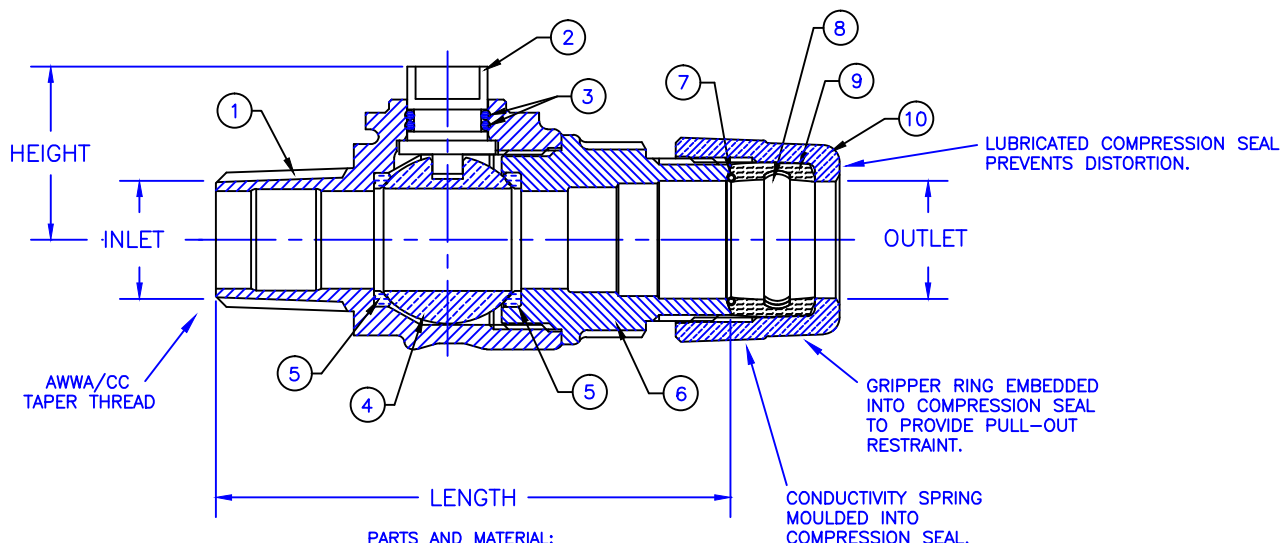


MODEL NO. 301NL

AWWA (CC) x CB COMPRESSION

CORPORATION MAIN STOP
BALL STYLE

AWWA/CC TAPER THREAD INLET BY CB COMPRESSION FOR COPPER OR PLASTIC TUBING (CTS) OUTLET



PARTS AND MATERIAL:

1. VALVE BODY: CAST BRASS, ALLOY C89833
2. STEM: STAINLESS STEEL, TYPE 303
3. O-RING: NITRILE RUBBER
4. BALL: CAST BRASS, ALLOY C89833
5. SEATS: TEFLON
6. ENDBODY: CAST BRASS, ALLOY C89833
7. CONDUCTOR SPRING: BRASS
8. GRIPPER: STAINLESS STEEL, TYPE 302
9. COMPRESSION SEAL: EPDM
10. TAILNUT: CAST BRASS, ALLOY C83600

FEATURES:

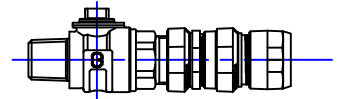
- ALL COMPONENTS CONFORM TO AWWA C800 (ASTM B-584, UNS NO C89833 FOR BRASS PARTS IN CONTACT WITH POTABLE WATER, AND ASTM B-62 AND B-584, UNS NO C83600 FOR ALL OTHER BRASS PARTS).
- CONFORMS TO ANSI/NSF 61-8
- CONFORMS TO ANSI/NSF 372 (COMPLIANT WITH US Safe Drinking Water Act. PL 111-380)
- BLOWOUT PROOF DESIGN.
- 300 PSI WORKING PRESSURE.
- BODY PROVIDES LARGE, RUGGED FLATS FOR PROPER INSTALLATION.
- FULL 360 DEGREE ROTATION.

Cambridge Brass considers the information in this submittal form to be correct at the time of publication. Item and option availability, including specifications, are subject to change without notice.

VALVE SIZE	CATALOG NO.	INLET AWWA/CC	OUTLET CB COMP.	LENGTH	HEIGHT	APPROX. WT. LBS.
5/8"	301NL-A2H2	5/8"	5/8"	3.92"	1.16"	1.5
3/4"	301NL-A3H3	3/4"	3/4"	4.05"	1.33"	1.8
3/4"	301NL-A3H4	3/4"	1"	4.30"	1.33"	2.1
1"	301NL-A4H4	1"	1"	4.59"	1.51"	2.8
1 1/4"	301NL-A5H5	1 1/4"	1 1/4"	6.37"	2.17"	8.2
1 1/2"	301NL-A6H6	1 1/2"	1 1/2"	6.49"	2.17"	7.5
1 1/2"	301NL-A6H7	1 1/2"	2"	6.53"	2.17"	8.2
2"	301NL-A7H7	2"	2"	6.78"	2.47"	10.6

Submitted by:

Cambridge Brass
P.O. Box 249
140 Orion Place
Cambridge, Ontario
Canada N1R 5V1
Tel: (519) 621-5520
Fax: (519) 621-8674
http://www.cambridgebrass.com

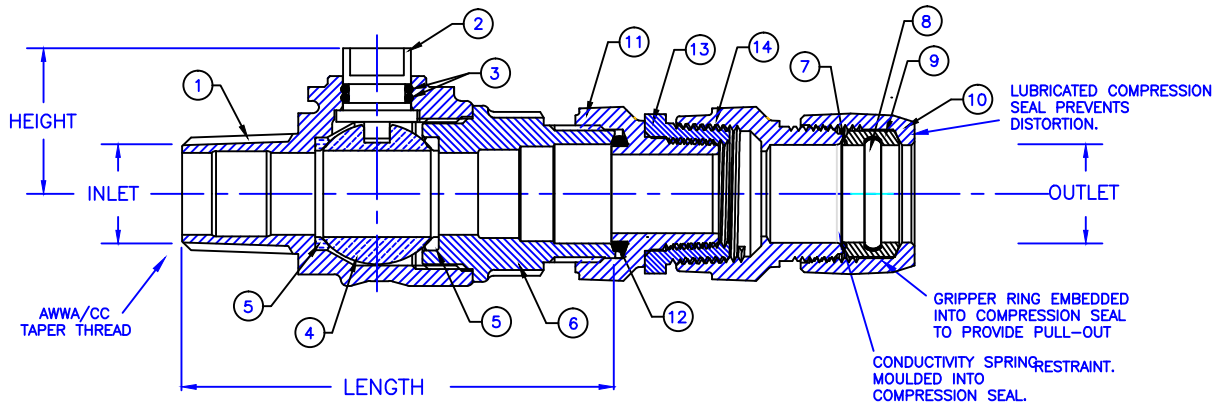


MODEL NO. 301NL

AWWA (CC) x CB COMPRESSION
INSULATED

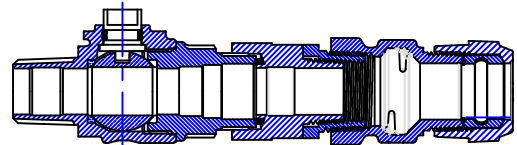
CORPORATION MAIN STOP
BALL STYLE

AWWA/CC TAPER THREAD INLET BY CB COMPRESSION FOR COPPER OR PLASTIC TUBING (CTS) OUTLET
WITH PROTECTION AGAINST SERVICE LINE ELECTROLYSIS

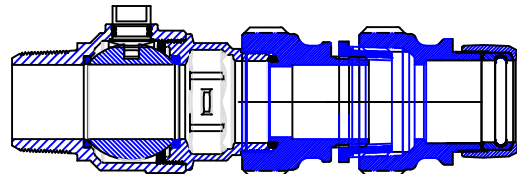


PARTS AND MATERIAL:

1. VALVE BODY: CAST BRASS, ALLOY C89833
2. STEM: STAINLESS STEEL, TYPE 303
3. O-RING: NITRILE RUBBER
4. BALL: CAST BRASS, ALLOY C89833
5. SEATS: TEFLON
6. ENDBODY: CAST BRASS, ALLOY C89833
7. CONDUCTOR SPRING: BRASS
8. GRIPPER: STAINLESS STEEL, TYPE 302
9. COMPRESSION SEAL: NITRILE RUBBER
10. TAILNUT: CAST BRASS, ALLOY C83600
11. FEMALE COMPRESSION BODY: CAST BRASS, ALLOY C89833
12. SEAL: NITRILE RUBBER
13. INSULATOR: NYLON
14. INSULATOR BODY: CAST BRASS, ALLOY C89833



301NL-A3HI3 CONFIGURATION



301NL-A6HI6 & 301NL-A7HI7 CONFIGURATION

FEATURES:

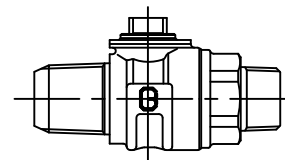
- MANUFACTURED IN COMPLIANCE WITH AWWA STANDARD C800-05 (ASTM B-584 UNS NO C89833 FOR BRASS PARTS IN CONTACT WITH POTABLE WATER, AND ASTM B-62 AND B-584 UNS NO C83600 FOR ALL OTHER BRASS PARTS).
- CSA CLASSIFIED TO ANSI/NSF STANDARD 61-8.
- BLOWOUT PROOF STEM DESIGN.
- 300 PSI WORKING PRESSURE.
- BODY PROVIDES LARGE, RUGGED FLATS FOR PROPER INSTALLATION.
- FULL 360 DEGREE ROTATION.

Cambridge Brass considers the information in this submittal form to be correct at the time of publication. Item and option availability, including specifications, are subject to change without notice.

VALVE SIZE	CATALOG NO.	INLET AWWA/CC	OUTLET CB COMP.	HEIGHT	LENGTH	APPROX. WT. LBS.
3/4"	301NL-A3HI3	3/4"	3/4"	1.33"	4.05"	2.8
1"	301NL-A4HI4	1"	1"	1.51"	4.59"	4.8
1 1/2"	301NL-A6HI6	1 1/2"	1 1/2"	2.17"	6.49"	11.5
2"	301NL-A7HI7	2"	2"	2.47"	6.78"	18.5

Submitted by:

Cambridge Brass
P.O. Box 249
140 Orion Place
Cambridge, Ontario
Canada N1R 5V1
Tel: (519) 621-5520
Fax: (519) 621-8674
<http://www.cambridgebrass.com>

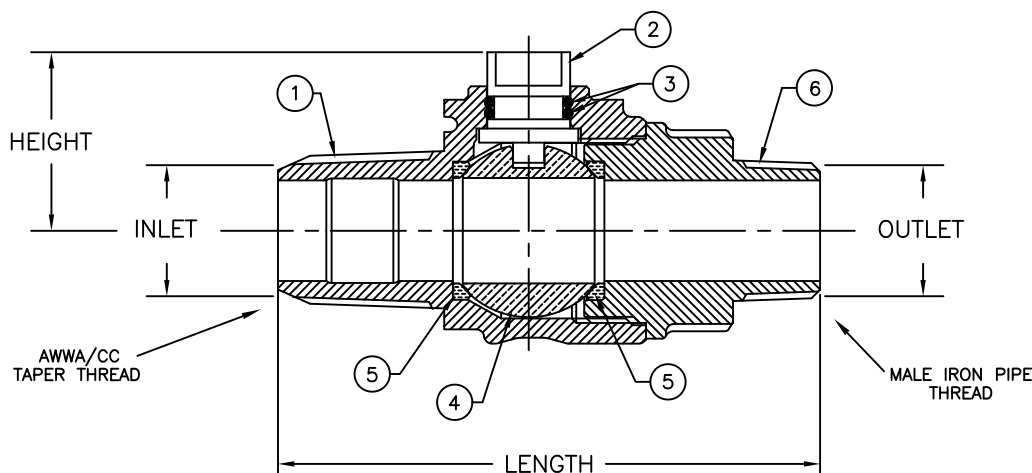


MODEL NO. 301NL

AWWA (CC) x MALE IRON PIPE

CORPORATION STOP
BALL STYLE

AWWA/CC TAPER THREAD INLET BY MALE IRON PIPE THREAD OUTLET



PARTS AND MATERIAL:

1. VALVE BODY: CAST BRASS, ALLOY C89833
2. STEM: STAINLESS STEEL, TYPE 303
3. O-RING: NITRILE RUBBER
4. BALL: CAST BRASS, ALLOY C89833
5. SEATS: TEFLON
6. ENDBODY: CAST BRASS, ALLOY C89833

FEATURES:

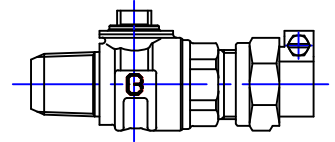
- ALL COMPONENTS CONFORM TO AWWA C800-05 (ASTM B-584, UNS NO C89833 FOR BRASS PARTS IN CONTACT WITH POTABLE WATER, AND ASTM B-62 AND B-584, UNS NO C83600 FOR ALL OTHER BRASS PARTS).
- CONFORMS TO ANSI/NSF 61-8
- CONFORMS TO ANSI/NSF 372 (COMPLIANT WITH US Safe Drinking Water Act. PL 111-380)
- BLOWOUT PROOF DESIGN.
- 300 PSI WORKING PRESSURE.
- BODY PROVIDES LARGE, RUGGED FLATS FOR PROPER INSTALLATION.
- FULL 360 DEGREE ROTATION.

Cambridge Brass considers the information in this submittal form to be correct at the time of publication. Item and option availability, including specifications, are subject to change without notice.

VALVE SIZE	CATALOG NO.	INLET AWWA/CC	OUTLET M.I.P.	LENGTH	HEIGHT	APPROX. WT. LBS.
3/4"	301NL-A3M3	3/4"	3/4"	4.05"	1.33"	1.4
1"	301NL-A4M4	1"	1"	4.71"	1.51"	2.2
1 1/4"	301NL-A5M5	1 1/4"	1 1/4"	6.50"	2.25"	5.1
1 1/2"	301NL-A6M6	1 1/2"	1 1/2"	6.40"	2.17"	6.4
1 1/2"	301NL-A6M7	1 1/2"	2"	6.56"	2.17"	7.2
2"	301NL-A7M7	2"	2"	6.78"	2.47"	9.3

Submitted by:

Cambridge Brass
P.O. Box 249
140 Orion Place
Cambridge, Ontario
Canada N1R 5V1
Tel: (519) 621-5520
Fax: (519) 621-8674
http://www.cambridgebrass.com

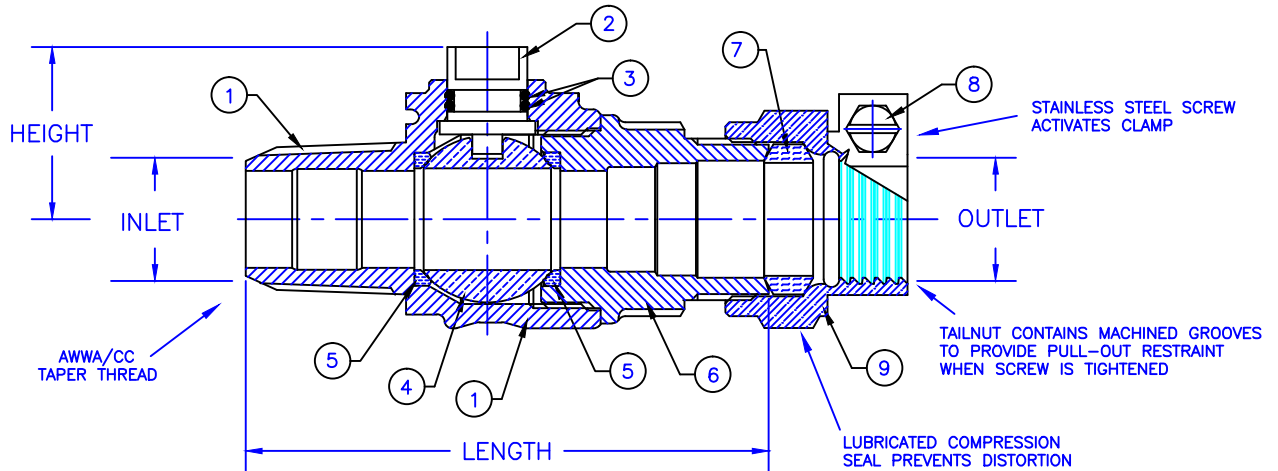


MODEL NO. 301NL

AWWA (CC) x CAMPAK

CORPORATION MAIN STOP
BALL STYLE

AWWA/CC TAPER THREAD INLET BY CAMPAK FOR COPPER OR PLASTIC TUBING (CTS) OUTLET



PARTS AND MATERIAL:

1. VALVE BODY: CAST BRASS, ALLOY C89833
2. STEM: STAINLESS STEEL, TYPE 303
3. O-RING: NITRILE RUBBER
4. BALL: CAST BRASS, ALLOY C89833
5. SEATS: TEFLON
6. ENDBODY: CAST BRASS, ALLOY C89833
7. COMPRESSION SEAL: NITRILE RUBBER
8. SCREW: STAINLESS STEEL, ALLOY 304
9. CAMPAK NUT: CAST BRASS, ALLOY C83600

FEATURES:

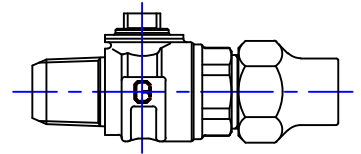
- MANUFACTURED IN COMPLIANCE WITH AWWA STANDARD C800-05 (ASTM B-584, UNS NO C89833).
- CONFORMS TO ANSI/NSF 61-8
- CONFORMS TO ANSI/NSF 372 (COMPLIANT WITH US Safe Drinking Water Act, PL 111-380)
- BLOWOUT PROOF DESIGN.
- 300 PSI WORKING PRESSURE.
- BODY PROVIDES LARGE, RUGGED FLATS FOR PROPER INSTALLATION.
- FULL 360 DEGREE ROTATION.

Cambridge Brass considers the information in this submittal form to be correct at the time of publication. Item and option availability, including specifications, are subject to change without notice.

VALVE SIZE	CATALOG NO.	INLET AWWA (CC)	OUTLET CAMPAK	LENGTH	HEIGHT	APPROX. WT. LBS.
3/4"	301NL-A3B3	3/4"	3/4"	4.05"	1.33"	1.8
1"	301NL-A4B4	1"	1"	4.59"	1.51"	2.7
1 1/2"	301NL-A6B6	1 1/2"	1 1/2"	6.49"	2.17"	
1 1/2"	301NL-A6B7	1 1/2"	2"	6.53"	2.17"	
2"	301NL-A7B7	2"	2"	6.78"	2.47"	

Submitted by:

Cambridge Brass
P.O. Box 249
140 Orion Place
Cambridge, Ontario
Canada N1R 5V1
Tel: (519) 621-5520
Fax: (519) 621-8674
<http://www.cambridgebrass.com>

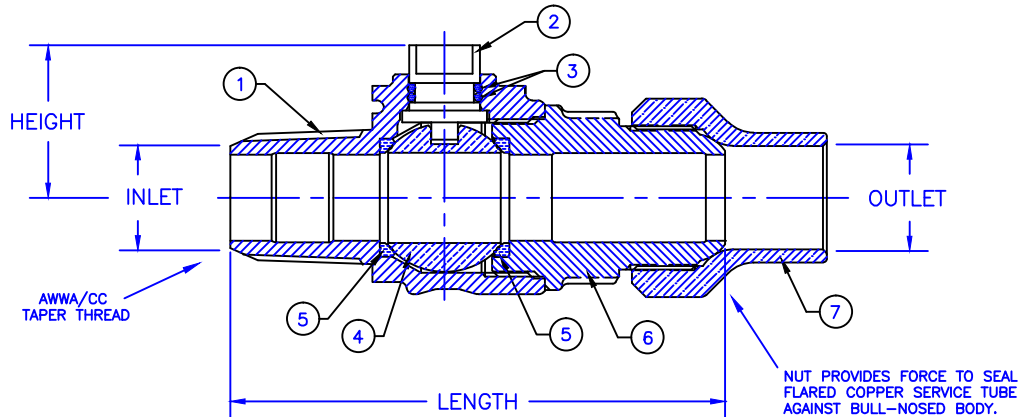


MODEL NO. 301NL

AWWA (CC) x COPPER FLARE

CORPORATION MAIN STOP
BALL STYLE

AWWA/CC TAPER THREAD INLET BY COPPER FLARE FOR COPPER TUBING OUTLET



PARTS AND MATERIAL:

1. VALVE BODY: CAST BRASS, ALLOY C89833
2. STEM: STAINLESS STEEL, TYPE 303
3. O-RING: NITRILE RUBBER
4. BALL: CAST BRASS, ALLOY C89833
5. SEATS: TEFLON
6. ENDBODY: CAST BRASS, ALLOY C89833
7. COPPER FLARE NUT: CAST BRASS, ALLOY C83600

FEATURES:

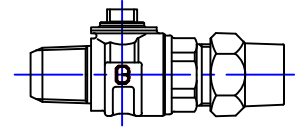
- MANUFACTURED IN COMPLIANCE WITH AWWA STANDARD C800-05 (ASTM B-584, UNS NO C89833).
- CONFORMS TO ANSI/NSF 61-8
- CONFORMS TO ANSI/NSF 372 (COMPLIANT WITH US Safe Drinking Water Act, PL 111-380)
- BLOWOUT PROOF DESIGN.
- 300 PSI WORKING PRESSURE.
- BODY PROVIDES LARGE, RUGGED FLATS FOR PROPER INSTALLATION.
- FULL 360 DEGREE ROTATION.

Cambridge Brass considers the information in this submittal form to be correct at the time of publication. Item and option availability, including specifications, are subject to change without notice.

VALVE SIZE	CATALOG NO.	INLET AWWA (CC)	OUTLET "CF"	LENGTH	HEIGHT	APPROX. WT. LBS.
1/2"	301NL-A1C1	1/2"	1/2"	3.87"	1.15"	1.1
3/4"	301NL-A3C3	3/4"	3/4"	4.32"	1.33"	1.9
1"	301NL-A4C4	1"	1"	4.82"	1.51"	2.9
1 1/4"	301NL-A5C5	1 1/4"	1 1/4"	6.37"	2.17"	8.4
1 1/2"	301NL-A6C6	1 1/2"	1 1/2"	6.99"	2.17"	8.5
2"	301NL-A7C7	2"	2"	7.41"	2.47"	12.8

Submitted by:

Cambridge Brass
P.O. Box 249
140 Orion Place
Cambridge, Ontario
Canada N1R 5V1
Tel: (519) 621-5520
Fax: (519) 621-8674
<http://www.cambridgebrass.com>

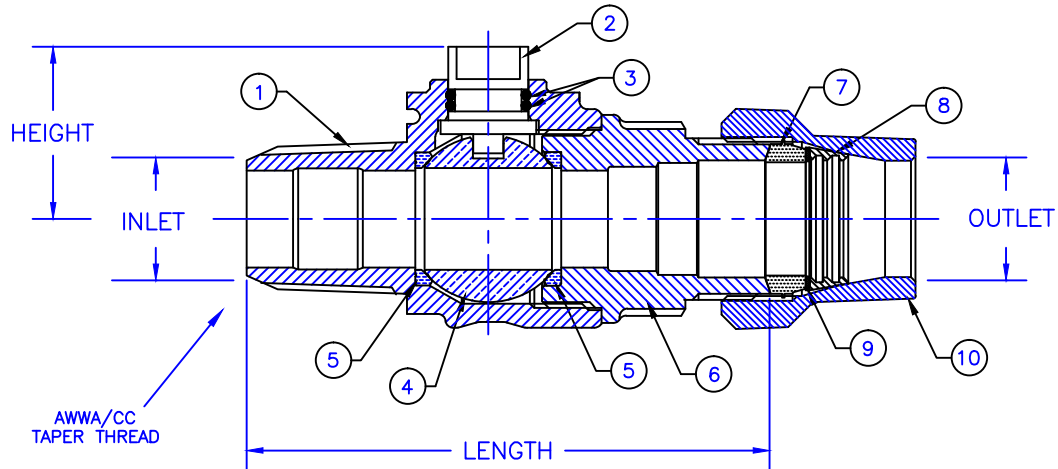


MODEL NO. 301NL

AWWA (CC) x GRIP JOINT

CORPORATION MAIN STOP
BALL STYLE

AWWA/CC TAPER THREAD INLET BY GRIP JOINT FOR COPPER OR PLASTIC TUBING (CTS) OUTLET



PARTS AND MATERIAL:

1. VALVE BODY: CAST BRASS, ALLOY C89833
2. STEM: STAINLESS STEEL, TYPE 303
3. O-RING: NITRILE RUBBER
4. BALL: CAST BRASS, ALLOY C89833
5. SEATS: TEFLON
6. ENDBODY: CAST BRASS, ALLOY C89833
7. GASKET: NITRILE RUBBER
8. GRIPPER: BRASS, ALLOY C26000
9. WASHER: POLYETHYLENE
10. GRIP JOINT NUT: CAST BRASS, ALLOY C83600

FEATURES:

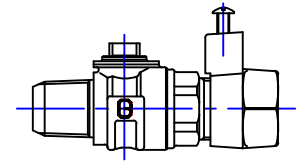
- MANUFACTURED IN COMPLIANCE WITH AWWA STANDARD C800-05 (ASTM B-584, UNS NO C89833).
- CONFORMS TO ANSI/NSF 61-8
- CONFORMS TO ANSI/NSF 372 (COMPLIANT WITH US Safe Drinking Water Act, PL 111-380)
- BLOWOUT PROOF DESIGN.
- 300 PSI WORKING PRESSURE.
- BODY PROVIDES LARGE, RUGGED FLATS FOR PROPER INSTALLATION.
- FULL 360 DEGREE ROTATION.

Cambridge Brass considers the information in this submittal form to be correct at the time of publication. Item and option availability, including specifications, are subject to change without notice.

VALVE SIZE	CATALOG NO.	INLET AWWA (CC)	OUTLET GRIP JOINT	LENGTH	HEIGHT	APPROX. WT. LBS.
3/4"	301NL-A3GJ3	3/4"	3/4"	4.05"	1.33"	1.7
1"	301NL-A4GJ4	1"	1"	4.59"	1.51"	2.9

Submitted by:

Cambridge Brass
P.O. Box 249
140 Orion Place
Cambridge, Ontario
Canada N1R 5V1
Tel: (519) 621-5520
Fax: (519) 621-8674
<http://www.cambridgebrass.com>

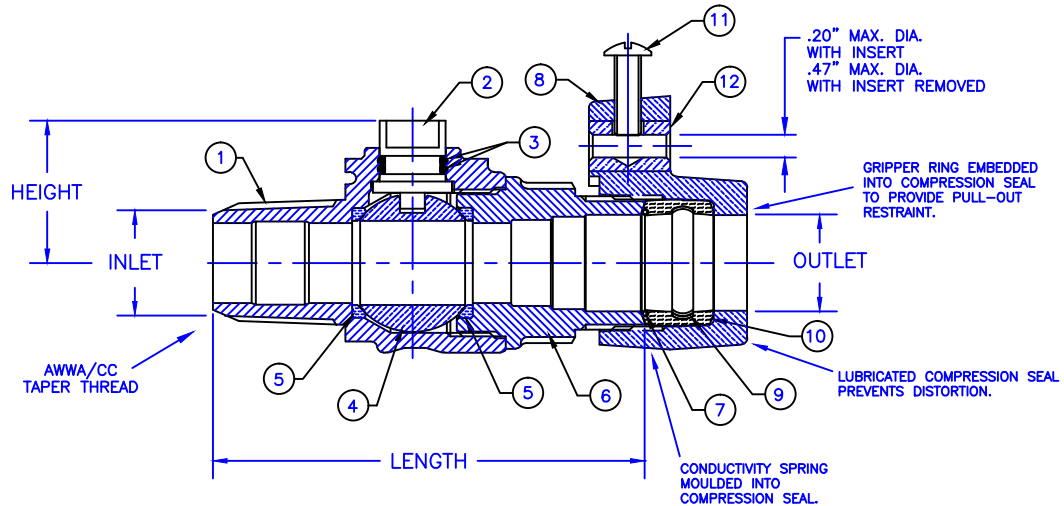


MODEL NO. 301NL

AWWA (CC) x CB COMPRESSION ELECTRICAL

CORPORATION MAIN STOP
BALL STYLE

AWWA/CC TAPER THREAD INLET BY CB COMPRESSION FOR COPPER OR PLASTIC TUBING (CTS) OUTLET



PARTS AND MATERIAL:

1. VALVE BODY: CAST BRASS, ALLOY C89833
2. STEM: STAINLESS STEEL, TYPE 303
3. O-RING: NITRILE RUBBER
4. BALL: CAST BRASS, ALLOY C89833
5. SEATS: TEFLON
6. ENDBODY: CAST BRASS, ALLOY C89833
7. CONDUCTOR SPRING: BRASS
8. CB ELECT. TRAILNUT: CAST BRASS, ALLOY C83600
9. GRIPPER: STAINLESS STEEL, TYPE 302
10. COMPRESSION SEAL: NITRILE RUBBER
11. SCREW: SILICON BRONZE
12. INSERT: COPPER, ALLOY C14500

FEATURES:

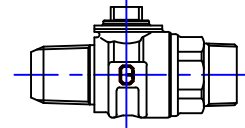
- ALL COMPONENTS CONFORM TO AWWA C800-05 (ASTM B-584, UNS NO C89833 FOR BRASS PARTS IN CONTACT WITH POTABLE WATER, AND ASTM B-62 AND B-584, UNS NO C83600 FOR ALL OTHER BRASS PARTS).
- CONFORMS TO ANSI/NSF 61-8
- CONFORMS TO ANSI/NSF 372 (COMPLIANT WITH US Safe Drinking Water Act. PL 111-380)
- BLOWOUT PROOF DESIGN.
- 300 PSI WORKING PRESSURE.
- BODY PROVIDES LARGE, RUGGED FLATS FOR PROPER INSTALLATION.
- FULL 360 DEGREE ROTATION.

Cambridge Brass considers the information in this submittal form to be correct at the time of publication. Item and option availability, including specifications, are subject to change without notice.

VALVE SIZE	CATALOG NO.	INLET AWWA / CC	OUTLET CB ELECT.	LENGTH	HEIGHT	APPROX. WT. LBS.
3/4"	301NL-A3HE3	3/4"	3/4"	4.05"	1.33"	2.0
1"	301NL-A4HE4	1"	1"	4.59"	1.51"	3.0
1 1/2"	301NL-A6HE6	1 1/2"	1 1/2"	6.49"	2.17"	
1 1/2"	301NL-A6HE7	1 1/2"	2"	6.53"	2.17"	
2"	301NL-A7HE7	2"	2"	6.78"	2.47"	11.2

Submitted by:

Cambridge Brass
P.O. Box 249
140 Orion Place
Cambridge, Ontario
Canada N1R 5V1
Tel: (519) 621-5520
Fax: (519) 621-8674
http://www.cambridgebrass.com

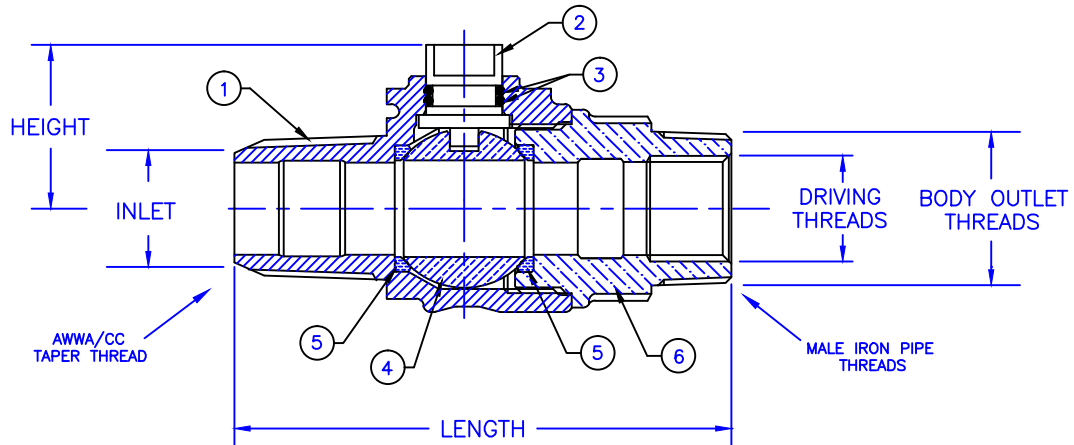


MODEL NO. 301NL

AWWA (CC) x
INTERNAL DRIVING THREAD

CORPORATION MAIN STOP
BALL STYLE

AWWA/CC TAPER THREAD INLET BY INCREASED MIP THREAD OUTLET WITH INTERNAL DRIVING THREAD



PARTS AND MATERIAL:

1. VALVE BODY: CAST BRASS, ALLOY C89833
2. STEM: STAINLESS STEEL, TYPE 303
3. O-RING: NITRILE RUBBER
4. BALL: CAST BRASS, ALLOY C89833
5. SEATS: TEFLON
6. ENDBODY: CAST BRASS, ALLOY C89833

FEATURES:

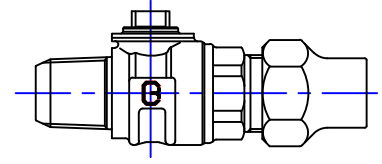
- ALL COMPONENTS CONFORM TO AWWA C800-05 (ASTM B-584, UNS NO C89833 FOR BRASS PARTS IN CONTACT WITH POTABLE WATER, AND ASTM B-62 AND B-584, UNS NO C83600 FOR ALL OTHER BRASS PARTS).
- CONFORMS TO ANSI/NSF 61-8
- CONFORMS TO ANSI/NSF 372 (COMPLIANT WITH US Safe Drinking Water Act. PL 111-380)
- BLOWOUT PROOF DESIGN.
- 300 PSI WORKING PRESSURE.
- BODY PROVIDES LARGE, RUGGED FLATS FOR PROPER INSTALLATION.
- FULL 360 DEGREE ROTATION.

Cambridge Brass considers the information in this submittal form to be correct at the time of publication. Item and option availability, including specifications, are subject to change without notice.

VALVE SIZE	CATALOG NO.	INLET AWWA (CC)	OUTLET M.I.P.	DRIVING THREAD	LENGTH	HEIGHT	APPROX. WT. LBS.
3/4"	301NL-A3ID3	3/4"	1"	.75-12	4.27"	1.33"	
1"	301NL-A4ID4	1"	1 1/4"	1.00-12	4.65"	1.51"	
1 1/2"	301NL-A6ID6	1 1/2"	2"	1.50-8	6.56"	2.17"	
2"	301NL-A7ID7	2"	2 1/2"	2.00-8	7.04"	2.47"	10.3

Submitted by:

Cambridge Brass
P.O. Box 249
140 Orion Place
Cambridge, Ontario
Canada N1R 5V1
Tel: (519) 621-5520
Fax: (519) 621-8674
<http://www.cambridgebrass.com>

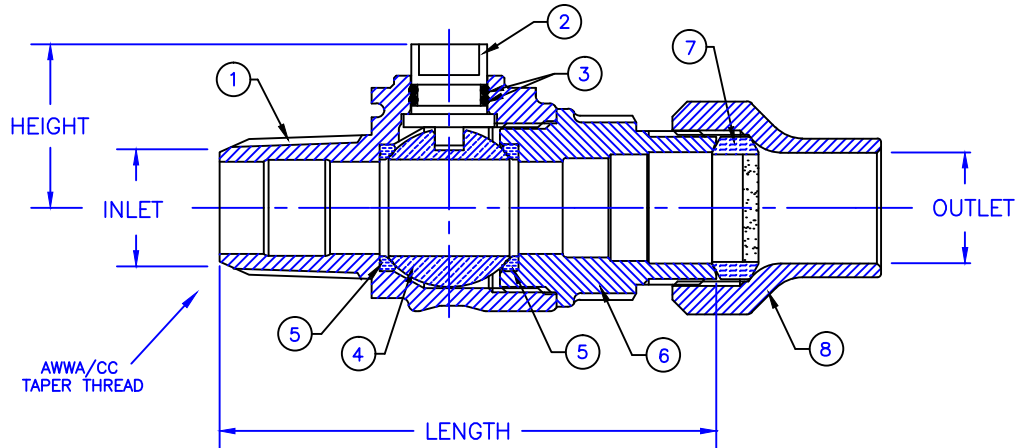


MODEL NO. 301NL

AWWA (CC) x HAYSTITE

CORPORATION MAIN STOP
BALL STYLE

AWWA/CC TAPER THREAD INLET BY HAYSTITE FOR COPPER OR PLASTIC TUBING (CTS) OUTLET



PARTS AND MATERIAL:

- 1. VALVE BODY: CAST BRASS, ALLOY C89833
- 2. STEM: STAINLESS STEEL, TYPE 303
- 3. O-RING: NITRILE RUBBER
- 4. BALL: CAST BRASS, ALLOY C89833
- 5. SEATS: TEFLON
- 6. ENDBODY: CAST BRASS, ALLOY C89833
- 7. COMPRESSION SEAL: NITRILE RUBBER, WITH GRIT
- 8. TAILNUT: CAST BRASS, ALLOY C83600

FEATURES:

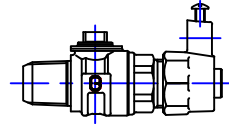
- ALL COMPONENTS CONFORM TO AWWA C800-05 (ASTM B-584, UNS NO C89833 FOR BRASS PARTS IN CONTACT WITH POTABLE WATER, AND ASTM B-62 AND B-584, UNS NO C83600 FOR ALL OTHER BRASS PARTS).
- CONFORMS TO ANSI/NSF 61-8
- CONFORMS TO ANSI/NSF 372 (COMPLIANT WITH US Safe Drinking Water Act. PL 111-380)
- BLOWOUT PROOF DESIGN.
- 300 PSI WORKING PRESSURE.
- BODY PROVIDES LARGE, RUGGED FLATS FOR PROPER INSTALLATION.
- FULL 360 DEGREE ROTATION.

Cambridge Brass considers the information in this submittal form to be correct at the time of publication. Item and option availability, including specifications, are subject to change without notice.

VALVE SIZE	CATALOG NO.	INLET AWWA / CC	OUTLET HAYSTITE	LENGTH	HEIGHT	APPROX. WT. LBS.
3/4"	301NL-A3J3	3/4"	3/4"	4.05"	1.33"	1.7
1"	301NL-A4J4	1"	1"	4.59"	1.51"	

Submitted by:

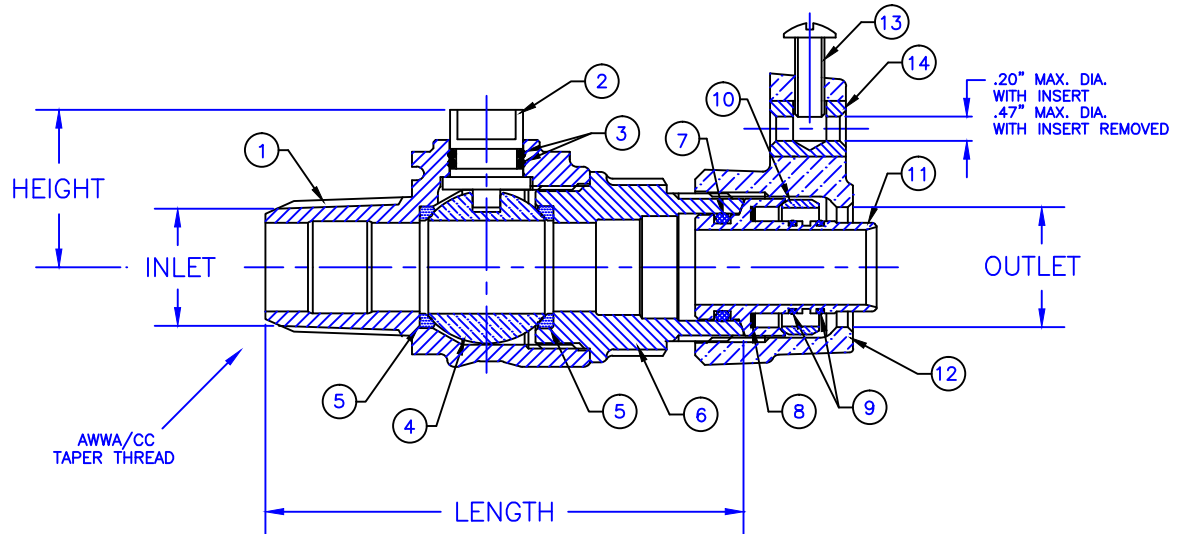
Cambridge Brass
P.O. Box 249
140 Orion Place
Cambridge, Ontario
Canada N1R 5V1
Tel: (519) 621-5520
Fax: (519) 621-8674
<http://www.cambridgebrass.com>



MODEL NO. 301NL

AWWA (CC) x KITEC ELECTRICAL

CORPORATION MAIN STOP
BALL STYLE



PARTS AND MATERIAL:

1. VALVE BODY: CAST BRASS, ALLOY C89833
2. STEM: STAINLESS STEEL, TYPE 303
3. O-RING: NITRILE RUBBER
4. BALL: CAST BRASS, ALLOY C89833
5. SEATS: TEFLON
6. ENDBODY: CAST BRASS, ALLOY C89833
7. O-RING: NITRILE RUBBER
8. INSULATOR: POLYETHYLENE
9. O-RING: NITRILE RUBBER
10. GRIPPER: BRASS, ALLOY C51000
11. INSERT: COPPER, ALLOY C23000
12. KITEC ELECTRICAL NUT: CAST BRASS, ALLOY C83600
13. SCREW: SILICON BRONZE
14. INSERT: COPPER, ALLOY C14500

FEATURES:

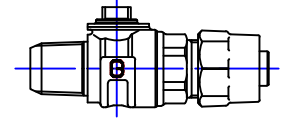
- ALL COMPONENTS CONFORM TO AWWA C800-05 (ASTM B-584, UNS NO C89833 FOR BRASS PARTS IN CONTACT WITH POTABLE WATER, AND ASTM B-62 AND B-584, UNS NO C83600 FOR ALL OTHER BRASS PARTS).
- CONFORMS TO ANSI/NSF 61-8
- CONFORMS TO ANSI/NSF 372 (COMPLIANT WITH US Safe Drinking Water Act. PL 111-380)
- BLOWOUT PROOF DESIGN.
- 300 PSI WORKING PRESSURE.
- BODY PROVIDES LARGE, RUGGED FLATS FOR PROPER INSTALLATION.
- FULL 360 DEGREE ROTATION.

Cambridge Brass considers the information in this submittal form to be correct at the time of publication. Item and option availability, including specifications, are subject to change without notice.

VALVE SIZE	CATALOG NO.	INLET AWWA (CC)	OUTLET KITEC	LENGTH	HEIGHT	APPROX. WT. LBS.
3/4"	301NL-A3KE3	3/4"	3/4"	4.05"	1.33"	1.9
1"	301NL-A4KE4	1"	1"	4.59"	1.51"	2.9

Submitted by:

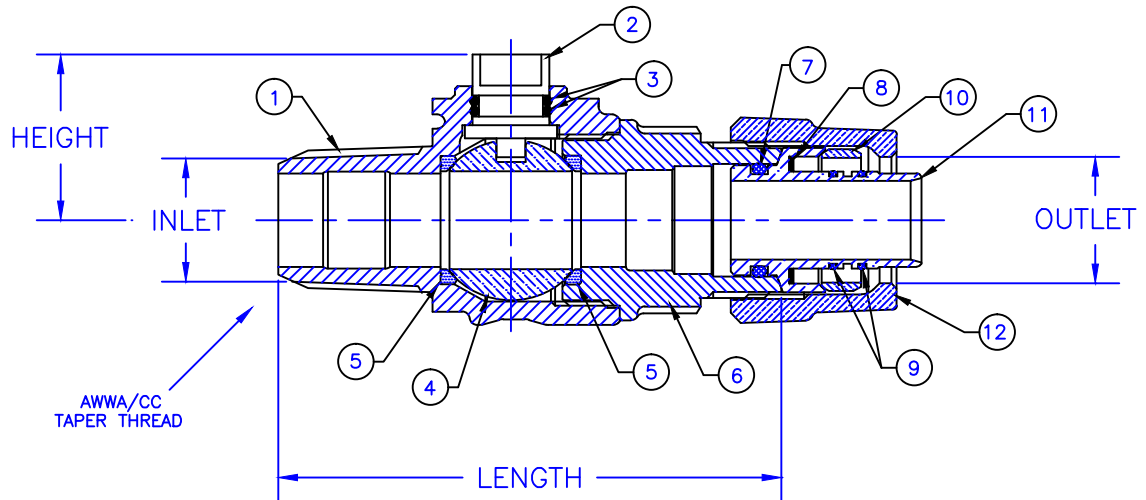
Cambridge Brass
P.O. Box 249
140 Orion Place
Cambridge, Ontario
Canada N1R 5V1
Tel: (519) 621-5520
Fax: (519) 621-8674
<http://www.cambridgebrass.com>



MODEL NO. 301NL

AWWA (CC) x KITEC

CORPORATION MAIN STOP
BALL STYLE



PARTS AND MATERIAL:

1. VALVE BODY: CAST BRASS, ALLOY C89833
2. STEM: STAINLESS STEEL, TYPE 303
3. O-RING: NITRILE RUBBER
4. BALL: CAST BRASS, ALLOY C89833
5. SEATS: TEFLON
6. ENDBODY: CAST BRASS, ALLOY C89833
7. O-RING: NITRILE RUBBER
8. INSULATOR: POLYETHYLENE
9. O-RING: NITRILE RUBBER
10. GRIPPER: BRASS, ALLOY C51000
11. INSERT: COPPER, ALLOY C23000
12. KITEC NUT: CAST BRASS, ALLOY C83600

FEATURES:

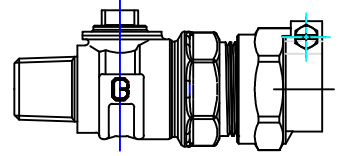
- ALL COMPONENTS CONFORM TO AWWA C800-05 (ASTM B-584, UNS NO C89833 FOR BRASS PARTS IN CONTACT WITH POTABLE WATER, AND ASTM B-62 AND B-584, UNS NO C83600 FOR ALL OTHER BRASS PARTS).
- CONFORMS TO ANSI/NSF 61-8
- CONFORMS TO ANSI/NSF 372 (COMPLIANT WITH US Safe Drinking Water Act. PL 111-380)
- BLOWOUT PROOF DESIGN.
- 300 PSI WORKING PRESSURE.
- BODY PROVIDES LARGE, RUGGED FLATS FOR PROPER INSTALLATION.
- FULL 360 DEGREE ROTATION.

Cambridge Brass considers the information in this submittal form to be correct at the time of publication. Item and option availability, including specifications, are subject to change without notice.

VALVE SIZE	CATALOG NO.	INLET AWWA (CC)	OUTLET KITEC	LENGTH	HEIGHT	APPROX. WT. LBS.
3/4"	301NL-A3K3	3/4"	3/4"	4.05"	1.33"	1.9
1"	301NL-A4K4	1"	1"	4.59"	1.51"	2.9

Submitted by:

Cambridge Brass
P.O. Box 249
140 Orion Place
Cambridge, Ontario
Canada N1R 5V1
Tel: (519) 621-5520
Fax: (519) 621-8674
<http://www.cambridgebrass.com>

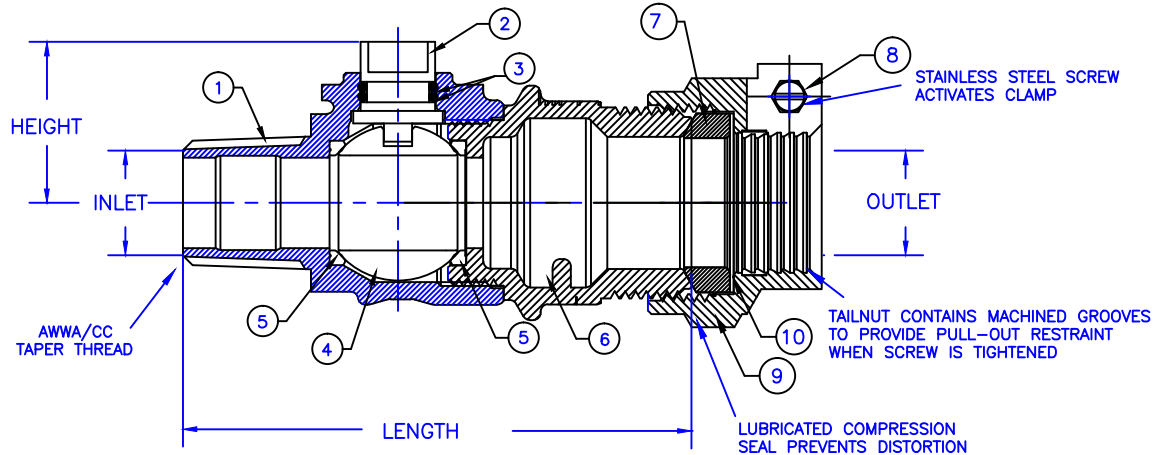


MODEL NO. 301NL

AWWA (CC) x PEP

CORPORATION MAIN STOP
BALL STYLE

AWWA/CC TAPER THREAD INLET BY PEP OUTLET



PARTS AND MATERIAL:

1. VALVE BODY: CAST BRASS, ALLOY C89833
2. STEM: STAINLESS STEEL, TYPE 303
3. O-RING: NITRILE RUBBER
4. BALL: CAST BRASS, ALLOY C89833
5. SEATS: TEFLON
6. ENDBODY: CAST BRASS, ALLOY C89833
7. COMPRESSION SEAL: NITRILE RUBBER
8. SCREW: STAINLESS STEEL, ALLOY 304
9. CAMPAK NUT: CAST BRASS, ALLOY C83600
10. ANTI-FRICTION RING: HDPE

FEATURES:

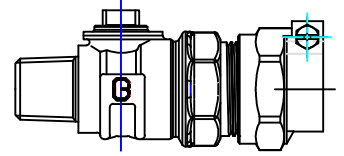
- ALL COMPONENTS CONFORM TO AWWA C800-05 (ASTM B-584, UNS NO C89833 FOR BRASS PARTS IN CONTACT WITH POTABLE WATER, AND ASTM B-62 AND B-584, UNS NO C83600 FOR ALL OTHER BRASS PARTS).
- CONFORMS TO ANSI/NSF 61-8
- CONFORMS TO ANSI/NSF 372 (COMPLIANT WITH US Safe Drinking Water Act. PL 111-380)
- BLOWOUT PROOF DESIGN.
- 300 PSI WORKING PRESSURE.
- BODY PROVIDES LARGE, RUGGED FLATS FOR PROPER INSTALLATION.
- FULL 360 DEGREE ROTATION.

Cambridge Brass considers the information in this submittal form to be correct at the time of publication. Item and option availability, including specifications, are subject to change without notice.

VALVE SIZE	CATALOG NO.	INLET AWWA/CC	OUTLET PEP	LENGTH	HEIGHT	APPROX. WT. LBS.
3/4"	301NL-A3PE3	3/4"	3/4"	4.21"	1.33"	
1"	301NL-A4PE4	1"	1"	4.78"	1.51"	
1 1/4"	301NL-A5PE5	1 1/4"	1 1/4"	5.65"	1.74"	
1 1/2"	301NL-A6PE6	1 1/2"	1 1/2"	6.53"	2.00"	
2"	301NL-A7PE7	2"	2"	6.70"	2.36"	

Submitted by:

Cambridge Brass
P.O. Box 249
140 Orion Place
Cambridge, Ontario
Canada N1R 5V1
Tel: (519) 621-5520
Fax: (519) 621-8674
<http://www.cambridgebrass.com>

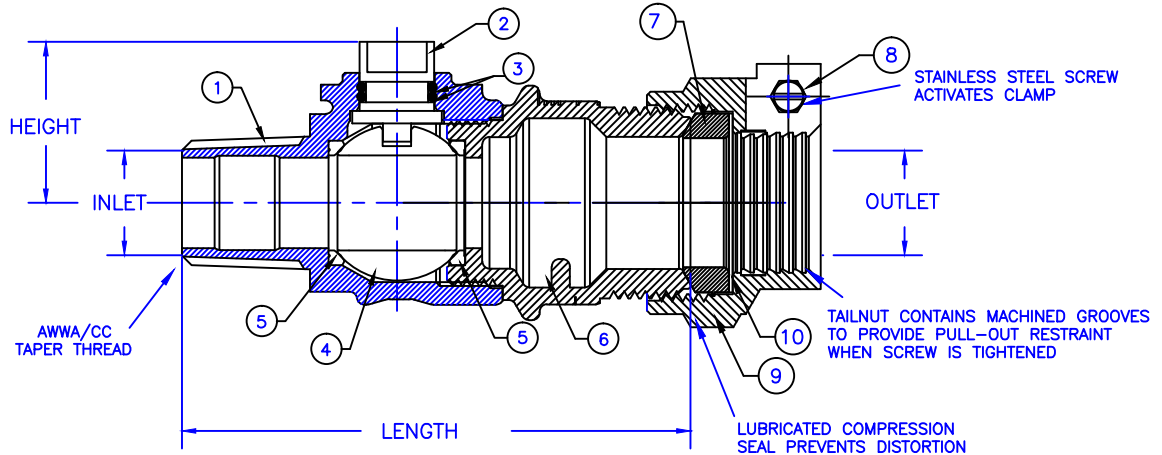


MODEL NO. 301NL

MIP x PVC

CORPORATION MAIN STOP
BALL STYLE

MIP TAPER THREAD INLET BY PVC OUTLET



PARTS AND MATERIAL:

1. VALVE BODY: CAST BRASS, ALLOY C89833
2. STEM: STAINLESS STEEL, TYPE 303
3. O-RING: NITRILE RUBBER
4. BALL: CAST BRASS, ALLOY C89833
5. SEATS: TEFLON
6. ENDBODY: CAST BRASS, ALLOY C89833
7. COMPRESSION SEAL: NITRILE RUBBER
8. SCREW: STAINLESS STEEL, ALLOY 304
9. CAMPAK NUT: CAST BRASS, ALLOY C83600
10. ANTI-FRICTION RING: HDPE

FEATURES:

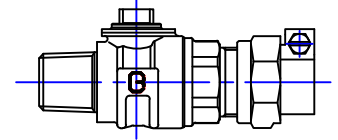
- ALL COMPONENTS CONFORM TO AWWA C800-05 (ASTM B-584, UNS NO C89833 FOR BRASS PARTS IN CONTACT WITH POTABLE WATER, AND ASTM B-62 AND B-584, UNS NO C83600 FOR ALL OTHER BRASS PARTS).
- CSA CLASSIFIED TO ANSI/NSF STANDARD 61-8.
- BLOWOUT PROOF DESIGN.
- 300 PSI WORKING PRESSURE.
- BODY PROVIDES LARGE, RUGGED FLATS FOR PROPER INSTALLATION.
- FULL 360 DEGREE ROTATION.

Cambridge Brass considers the information in this submittal form to be correct at the time of publication. Item and option availability, including specifications, are subject to change without notice.

VALVE SIZE	CATALOG NO.	INLET MIP	OUTLET PVC	LENGTH	HEIGHT	APPROX. WT. LBS.
3/4"	301NL-M3PJ3	3/4"	3/4"	4.21"	1.35"	
1"	301NL-M4PJ4	1"	1"	4.74"	1.51"	
1 1/4"	301NL-M5PJ5	1 1/4"	1 1/4"	5.65"	1.75"	6.45"
1 1/2"	301NL-M6PJ6	1 1/2"	1 1/2"	6.53"	2.15"	
2"	301NL-M7PJ7	2"	2"	6.60"	2.40"	

Submitted by:

Cambridge Brass
P.O. Box 249
140 Orion Place
Cambridge, Ontario
Canada N1R 5V1
Tel: (519) 621-5520
Fax: (519) 621-8674
<http://www.cambridgebrass.com>

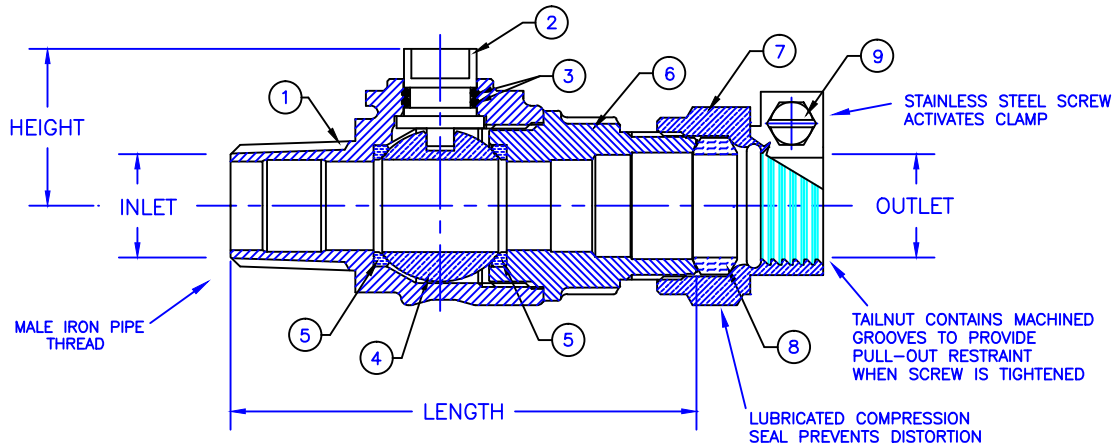


MODEL NO. 301NL

MALE IRON PIPE x CAMPAK

CORPORATION MAIN STOP
BALL STYLE

MALE IRON PIPE THREAD INLET BY CAMPAK FOR COPPER OR PLASTIC TUBING (CTS) OUTLET



PARTS AND MATERIAL:

1. VALVE BODY: CAST BRASS, ALLOY C89833
2. STEM: STAINLESS STEEL, TYPE 303
3. O-RING: NITRILE RUBBER
4. BALL: CAST BRASS, ALLOY C89833
5. SEATS: TEFLON
6. ENDBODY: CAST BRASS, ALLOY C89833
7. CAMPAK NUT: CAST BRASS, ALLOY C83600
8. COMPRESSION SEAL: NITRILE RUBBER
9. SCREW: STAINLESS STEEL, ALLOY 304

FEATURES:

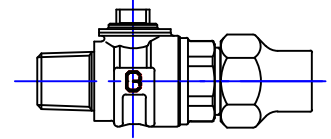
- ALL COMPONENTS CONFORM TO AWWA C800-05 (ASTM B-584, UNS NO C89833 FOR BRASS PARTS IN CONTACT WITH POTABLE WATER, AND ASTM B-62 AND B-584, UNS NO C83600 FOR ALL OTHER BRASS PARTS).
- CONFORMS TO ANSI/NSF 61-8
- CONFORMS TO ANSI/NSF 372 (COMPLIANT WITH US Safe Drinking Water Act. PL 111-380)
- BLOWOUT PROOF DESIGN.
- 300 PSI WORKING PRESSURE.
- BODY PROVIDES LARGE, RUGGED FLATS FOR PROPER INSTALLATION.
- FULL 360 DEGREE ROTATION.

Cambridge Brass considers the information in this submittal form to be correct at the time of publication. Item and option availability, including specifications, are subject to change without notice.

VALVE SIZE	CATALOG NO.	INLET M.I.P.	OUTLET CAMPAK	LENGTH	HEIGHT	APPROX. WT. LBS.
3/4"	301NL-M3B3	3/4"	3/4"	3.96"	1.33"	1.8
1"	301NL-M4B4	1"	1"	4.59"	1.51"	2.7
1 1/2"	301NL-M6B6	1 1/2"	1 1/2"	6.49"	2.17"	7.6
1 1/2"	301NL-M6B7	1 1/2"	2"	6.53"	2.17"	
2"	301NL-M7B7	2"	2"	6.83"	2.47"	

Submitted by:

Cambridge Brass
P.O. Box 249
140 Orion Place
Cambridge, Ontario
Canada N1R 5V1
Tel: (519) 621-5520
Fax: (519) 621-8674
<http://www.cambridgebrass.com>

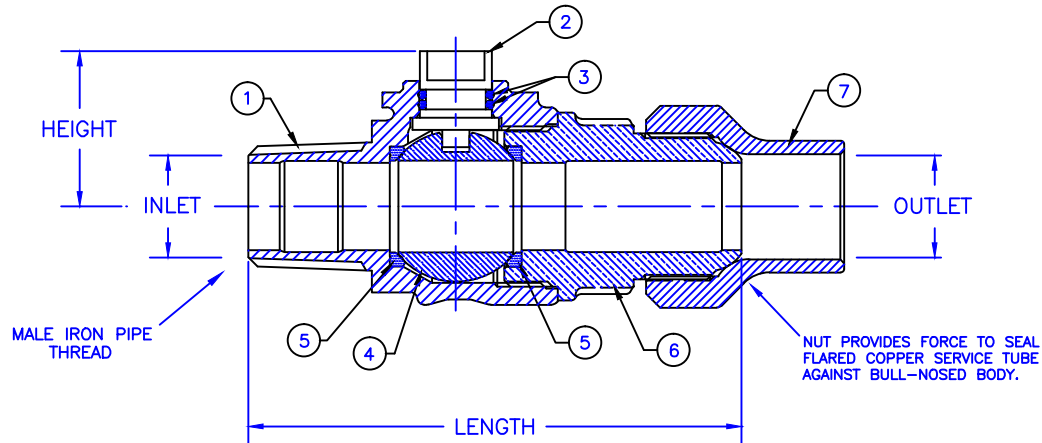


MODEL NO. 301NL

MALE IRON PIPE x COPPER FLARE

CORPORATION MAIN STOP
BALL STYLE

MALE IRON PIPE THREAD INLET BY COPPER FLARE FOR COPPER TUBING OUTLET



PARTS AND MATERIAL:

1. VALVE BODY: CAST BRASS, ALLOY C89833
2. STEM: STAINLESS STEEL, TYPE 303
3. O-RING: NITRILE RUBBER
4. BALL: CAST BRASS, ALLOY C89833
5. SEATS: TEFLON
6. ENDBODY: CAST BRASS, ALLOY C89833
7. COPPER FLARE NUT: CAST BRASS, ALLOY C83600

FEATURES:

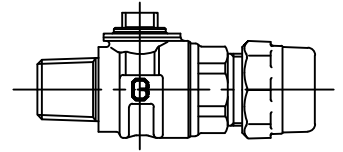
- ALL COMPONENTS CONFORM TO AWWA C800-05 (ASTM B-584, UNS NO C89833 FOR BRASS PARTS IN CONTACT WITH POTABLE WATER, AND ASTM B-62 AND B-584, UNS NO C83600 FOR ALL OTHER BRASS PARTS).
- CONFORMS TO ANSI/NSF 61-8
- CONFORMS TO ANSI/NSF 372 (COMPLIANT WITH US Safe Drinking Water Act. PL 111-380)
- BLOWOUT PROOF DESIGN.
- 300 PSI WORKING PRESSURE.
- BODY PROVIDES LARGE, RUGGED FLATS FOR PROPER INSTALLATION.
- FULL 360 DEGREE ROTATION.

Cambridge Brass considers the information in this submittal form to be correct at the time of publication. Item and option availability, including specifications, are subject to change without notice.

VALVE SIZE	CATALOG NO.	INLET M.I.P.	OUTLET "CF"	LENGTH	HEIGHT	APPROX. WT. LBS.
3/4"	301NL-M3C3	3/4"	3/4"	4.23"	1.33"	1.8
1"	301NL-M4C4	1"	1"	4.82"	1.51"	2.8
1 1/4"	301NL-M5C5	1 1/4"	1 1/4"	6.37"	2.17"	8.4
1 1/2"	301NL-M6C6	1 1/2"	1 1/2"	6.99"	2.17"	8.3
2"	301NL-M7C7	2"	2"	7.41"	2.47"	12.6

Submitted by:

Cambridge Brass
P.O. Box 249
140 Orion Place
Cambridge, Ontario
Canada N1R 5V1
Tel: (519) 621-5520
Fax: (519) 621-8674
http://www.cambridgebrass.com

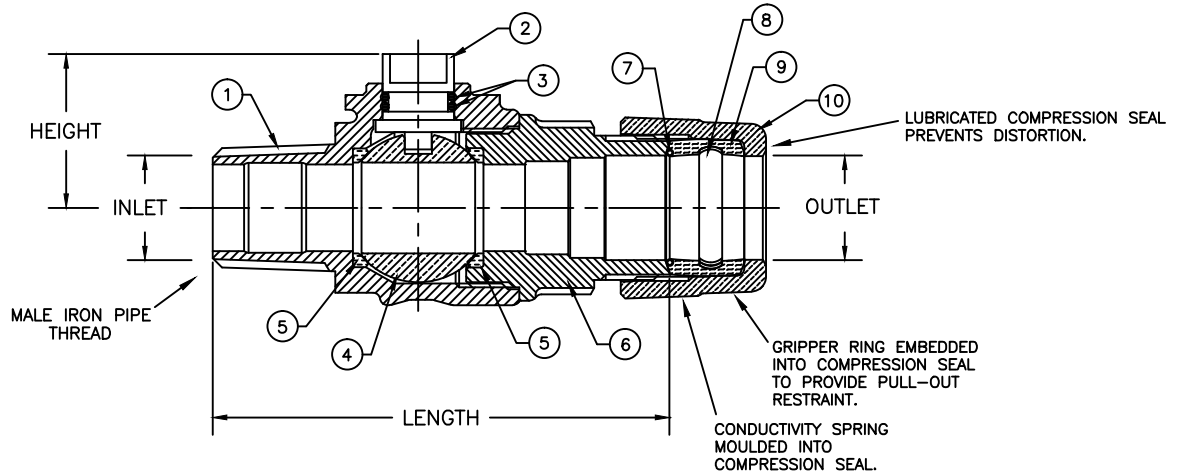


MODEL NO. 301NL

MALE IRON PIPE x CB COMPRESSION

CORPORATION MAIN STOP
BALL STYLE

MALE IRON PIPE THREAD INLET BY CB COMPRESSION FOR COPPER OR PLASTIC TUBING (CTS) OUTLET



PARTS AND MATERIAL:

1. VALVE BODY: CAST BRASS, ALLOY C89833
2. STEM: STAINLESS STEEL, TYPE 303
3. O-RING: NITRILE RUBBER
4. BALL: CAST BRASS, ALLOY C89833
5. SEATS: TEFLON
6. ENDBODY: CAST BRASS, ALLOY C89833
7. CONDUCTOR SPRING: BRASS
8. GRIPPER: STAINLESS STEEL, TYPE 302
9. COMPRESSION SEAL: NITRILE RUBBER
10. TAILNUT: CAST BRASS, ALLOY C83600

FEATURES:

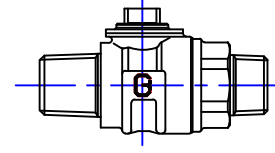
- ALL COMPONENTS CONFORM TO AWWA C800-05 (ASTM B-584, UNS NO C89833 FOR BRASS PARTS IN CONTACT WITH POTABLE WATER, AND ASTM B-62 AND B-584, UNS NO C83600 FOR ALL OTHER BRASS PARTS).
- CONFORMS TO ANSI/NSF 61-8
- CONFORMS TO ANSI/NSF 372 (COMPLIANT WITH US Safe Drinking Water Act. PL 111-380)
- BLOWOUT PROOF DESIGN.
- 300 PSI WORKING PRESSURE.
- BODY PROVIDES LARGE, RUGGED FLATS FOR PROPER INSTALLATION.
- FULL 360 DEGREE ROTATION.

Cambridge Brass considers the information in this submittal form to be correct at the time of publication. Item and option availability, including specifications, are subject to change without notice.

VALVE SIZE	CATALOG NO.	INLET M.I.P.	OUTLET CB COMP.	LENGTH	HEIGHT	APPROX. WT. LBS.
3/4"	301NL-M3H3	3/4"	3/4"	3.96"	1.33"	1.8
1"	301NL-M4H4	1"	1"	4.59"	1.51"	2.7
1 1/4"	301NL-M5H5	1 1/4"	1 1/4"	6.37"	2.17"	8.3
1 1/2"	301NL-M6H6	1 1/2"	1 1/2"	6.49"	2.17"	7.2
1 1/2"	301NL-M6H7	1 1/2"	2"	6.53"	2.17"	
2"	301NL-M7H7	2"	2"	6.83"	2.47"	10.2

Submitted by:

Cambridge Brass
P.O. Box 249
140 Orion Place
Cambridge, Ontario
Canada N1R 5V1
Tel: (519) 621-5520
Fax: (519) 621-8674
<http://www.cambridgebrass.com>

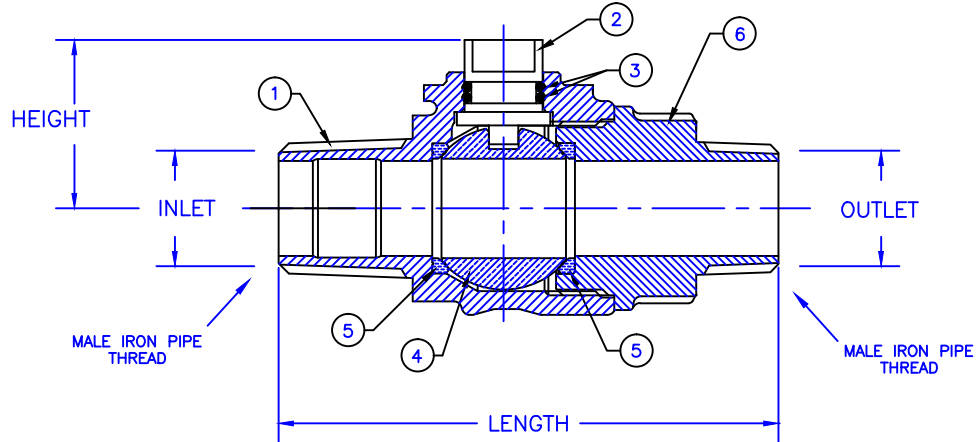


MODEL NO. 301NL

MALE IRON PIPE x MALE IRON PIPE

CORPORATION MAIN STOP
BALL STYLE

MALE IRON PIPE THREAD INLET BY MALE IRON PIPE THREAD OUTLET



PARTS AND MATERIAL:

1. VALVE BODY: CAST BRASS, ALLOY C89833
2. STEM: STAINLESS STEEL, TYPE 303
3. O-RING: NITRILE RUBBER
4. BALL: CAST BRASS, ALLOY C89833
5. SEATS: TEFLON
6. ENDBODY: CAST BRASS, ALLOY C89833

FEATURES:

- ALL COMPONENTS CONFORM TO AWWA C800-05 (ASTM B-584, UNS NO C89833 FOR BRASS PARTS IN CONTACT WITH POTABLE WATER, AND ASTM B-62 AND B-584, UNS NO C83600 FOR ALL OTHER BRASS PARTS).
- CONFORMS TO ANSI/NSF 61-8
- CONFORMS TO ANSI/NSF 372 (COMPLIANT WITH US Safe Drinking Water Act. PL 111-380)
- BLOWOUT PROOF DESIGN.
- 300 PSI WORKING PRESSURE.
- BODY PROVIDES LARGE, RUGGED FLATS FOR PROPER INSTALLATION.
- FULL 360 DEGREE ROTATION.

Cambridge Brass considers the information in this submittal form to be correct at the time of publication. Item and option availability, including specifications, are subject to change without notice.

VALVE SIZE	CATALOG NO.	INLET M.I.P.	OUTLET M.I.P.	LENGTH	HEIGHT	APPROX. WT. LBS.
3/4"	301NL-M3M3	3/4"	3/4"	3.96"	1.33"	1.4
1"	301NL-M4M4	1"	1"	4.71"	1.51"	2.2
1 1/2"	301NL-M6M6	1 1/2"	1 1/2"	6.40"	2.17"	6.3
1 1/2"	301NL-M6M7	1 1/2"	2"	6.40"	2.17"	7.2
2"	301NL-M7M7	2"	2"	6.85"	2.47"	8.8

Submitted by: