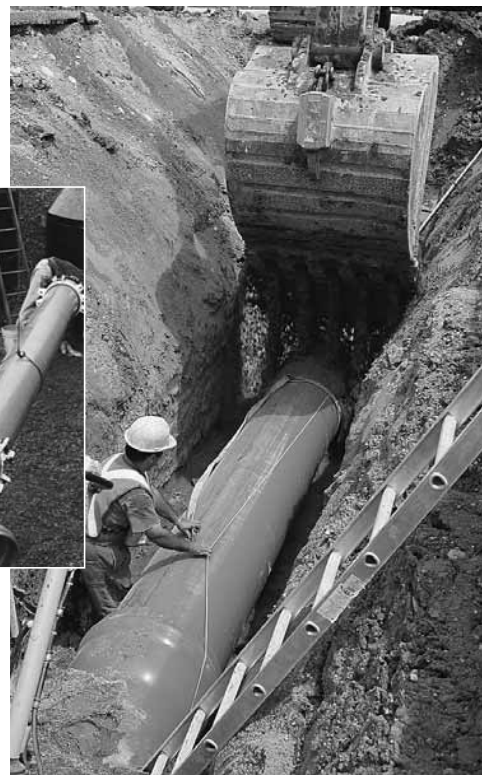


## IPEX CENTURION® PIPING SYSTEMS

IPEX Centurion extends the benefits of Blue Brute to larger diameters of pipe and new applications. The versatility and ease of installation of IPEX Centurion is unmatched – and costly and difficult to install corrosion protection is eliminated. In addition, unlike HDPE or concrete pressure pipe, every length of IPEX Centurion is tested to double its pressure rating.



### Applications:

Water transmission lines, forcemains.

Irrigation, gravity lines, industrial lines

### Standards:

AWWA C905, CSA B137.3, NQ 3624-250, NSF 61

#### Factory Mutual FM 1612:

DR18 is FM approved to 20" (500mm diameter)

#### Underwriter's Laboratories UL 1285:

DR18 is listed to 24" (600mm diameter)

DR25 is listed to 30" (750mm diameter)



## IPEX CENTURION® PIPING SYSTEMS

### Dimensions

IPEX Centurion is manufactured with a cast-iron outside diameter (CIOD) so it is compatible with much of the existing older infrastructure of iron pipes. In addition, IPEX Centurion can be field-cut, which means unexpected changes in the field can be accommodated quickly, without having to wait for new shop drawings.

IPEX Centurion Fittings are manufactured using sections of AWWA C905 pipe that are fused or bonded together. Some fittings are overwrapped with a layer of fibre reinforced plastic (FRP). While IPEX Centurion is compatible with iron fittings, IPEX recommends the use of IPEX Centurion fittings exclusively with IPEX Centurion pipe.

|      |      | PR/PC 80 (SDR51) |        |                     |       |         |        | PR/PC 100 (SDR41) |        |                     |      |         |        | PR/PC 125 (SDR32.5) |        |                     |      |         |        |
|------|------|------------------|--------|---------------------|-------|---------|--------|-------------------|--------|---------------------|------|---------|--------|---------------------|--------|---------------------|------|---------|--------|
| Size |      | Avg. ID          |        | Min. Wall Thickness |       | Avg. OD |        | Avg. ID           |        | Min. Wall Thickness |      | Avg. OD |        | Avg. ID             |        | Min. Wall Thickness |      | Avg. OD |        |
| in   | mm   | in               | mm     | in                  | mm    | in      | mm     | in                | mm     | in                  | mm   | in      | mm     | in                  | mm     | in                  | mm   | in      | mm     |
| 14   | 350  | -                | -      | -                   | -     | -       | -      | 14.6              | 369.7  | 0.37                | 9.5  | 15.3    | 388.6  | -                   | -      | -                   | -    | -       | -      |
| 16   | 400  | -                | -      | -                   | -     | -       | -      | 16.6              | 420.4  | 0.43                | 10.8 | 17.4    | 442.0  | -                   | -      | -                   | -    | -       | -      |
| 18   | 450  | 18.7             | 475.9  | 0.38                | 9.71  | 19.5    | 495.3  | 18.5              | 471.1  | 0.48                | 12.1 | 19.5    | 495.3  | -                   | -      | -                   | -    | -       | -      |
| 20   | 500  | 20.8             | 527.0  | 0.42                | 10.80 | 21.6    | 548.6  | 20.5              | 521.8  | 0.53                | 13.4 | 21.6    | 548.6  | -                   | -      | -                   | -    | -       | -      |
| 24   | 600  | 24.8             | 629.6  | 0.50                | 12.90 | 25.8    | 655.3  | 24.5              | 623.3  | 0.63                | 16.0 | 25.8    | 655.3  | 24.2                | 615.0  | 0.80                | 20.2 | 25.8    | 655.3  |
| 30   | 750  | 30.7             | 780.9  | 0.63                | 15.93 | 32.0    | 812.8  | 30.4              | 773.2  | 0.78                | 19.8 | 32.0    | 812.8  | 30.0                | 762.8  | 0.98                | 25.0 | 32.0    | 812.8  |
| 36   | 900  | 36.8             | 934.7  | 0.75                | 19.10 | 38.3    | 972.8  | 36.4              | 925.3  | 0.93                | 23.7 | 38.3    | 972.8  | 35.9                | 912.9  | 1.18                | 29.9 | 38.3    | 972.8  |
| 42   | 1050 | 42.6             | 1082.8 | 0.87                | 22.20 | 44.5    | 1130.3 | 42.2              | 1071.4 | 1.09                | 27.5 | 44.5    | 1130.3 | 41.6                | 1056.6 | 1.37                | 34.8 | 44.5    | 1130.3 |
| 48   | 1200 | 48.7             | 1236.2 | 1.00                | 25.30 | 50.8    | 1290.3 | 48.2              | 1223.0 | 1.24                | 31.5 | 50.8    | 1290.3 | -                   | -      | -                   | -    | -       | -      |

|      |      | PR/PC 165 (DR25) |       |                     |       |         |       | PR/PC 235 (DR18) |       |                     |      |         |       | PR/PC 305 (DR14) |       |                     |      |         |       |
|------|------|------------------|-------|---------------------|-------|---------|-------|------------------|-------|---------------------|------|---------|-------|------------------|-------|---------------------|------|---------|-------|
| Size |      | Avg. ID          |       | Min. Wall Thickness |       | Avg. OD |       | Avg. ID          |       | Min. Wall Thickness |      | Avg. OD |       | Avg. ID          |       | Min. Wall Thickness |      | Avg. OD |       |
| in   | mm   | in               | mm    | in                  | mm    | in      | mm    | in               | mm    | in                  | mm   | in      | mm    | in               | mm    | in                  | mm   | in      | mm    |
| 14   | 350  | 14.1             | 357.5 | 0.61                | 15.60 | 15.3    | 388.6 | 13.6             | 345.4 | 0.85                | 21.6 | 15.3    | 388.6 | 13.1             | 333.0 | 1.09                | 27.8 | 15.3    | 388.6 |
| 16   | 400  | 16.0             | 406.6 | 0.70                | 17.70 | 17.4    | 442.0 | 15.5             | 392.9 | 0.97                | 24.6 | 17.4    | 442.0 | 14.9             | 378.8 | 1.24                | 31.6 | 17.4    | 442.0 |
| 18   | 450  | 17.9             | 455.7 | 0.78                | 19.81 | 19.5    | 495.3 | 17.3             | 440.3 | 1.08                | 27.5 | 19.5    | 495.3 | -                | -     | -                   | -    | -       | -     |
| 20   | 500  | 19.9             | 504.7 | 0.86                | 22.00 | 21.6    | 548.6 | 19.2             | 487.6 | 1.20                | 30.5 | 21.6    | 548.6 | -                | -     | -                   | -    | -       | -     |
| 24   | 600  | 23.7             | 602.9 | 1.03                | 26.21 | 25.8    | 655.3 | 22.9             | 582.5 | 1.43                | 36.4 | 25.8    | 655.3 | -                | -     | -                   | -    | -       | -     |
| 30   | 750  | 29.4             | 747.8 | 1.28                | 32.51 | 32.0    | 812.8 | -                | -     | -                   | -    | -       | -     | -                | -     | -                   | -    | -       | -     |
| 36   | 900  | 35.2             | 895.0 | 1.53                | 38.91 | 38.3    | 972.8 | -                | -     | -                   | -    | -       | -     | -                | -     | -                   | -    | -       | -     |
| 42   | 1050 | -                | -     | -                   | -     | -       | -     | -                | -     | -                   | -    | -       | -     | -                | -     | -                   | -    | -       | -     |
| 48   | 1200 | -                | -     | -                   | -     | -       | -     | -                | -     | -                   | -    | -       | -     | -                | -     | -                   | -    | -       | -     |