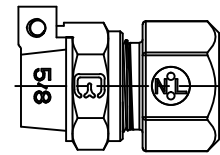


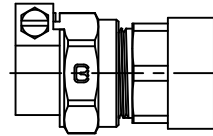
Cambridge Brass
P.O. Box 249
140 Orion Place
Cambridge, Ontario
Canada N1R 5V1
Tel: (519) 621-5520
Fax: (519) 621-8674
<http://www.cambridgebrass.com>



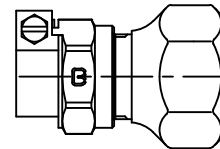
ADAPTER STYLE



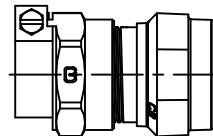
117NL-B2P2/117NL-B3P2/117NL-B4P5



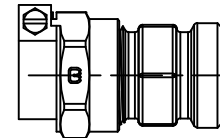
117NL-B3P3



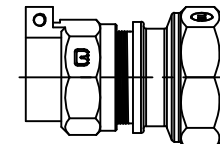
117NL-B3P4



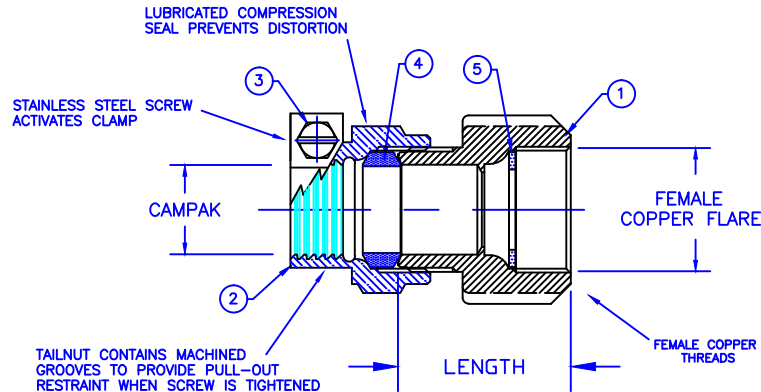
117NL-B4P4



117NL-B4P3



117NL-B6P6/117NL-B7P7



PARTS AND MATERIAL:

1. BODY: CAST BRASS, ALLOY C89833
2. COMPRESSEION NUT: CAST BRASS, ALLOY C83600
3. SCREW: STAINLESS STEEL, ALLOY 304
4. COMPRESSION SEAL: NITRILE RUBBER
5. SEALING WASHER: COPPER

FEATURES:

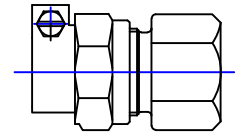
- CONFORMS TO AWWA C800 (ASTM B584 UNS C89833 FOR ALL BRASS PARTS IN CONTACT WITH POTABLE WATER)
- CONFORMS TO ANSI/NSF 61-8
- CONFORMS TO ANSI/NSF 372 (COMPLIANT WITH US Safe Drinking Water Act. PL 111-380)
- BODY AND NUTS PROVIDE WRENCH FLATS FOR INSTALLATION
- 300PSI WORKING PRESSURE

Cambridge Brass considers the information in this submittal form to be correct at the time of publication. Item and option availability, including specifications, are subject to change without notice.

CATALOG NO.	CAMPAK	FEMALE COPPER FLARE	LENGTH	APPROX. WT. LBS.
117NL-B2P2	5/8"	5/8"	1.47"	0.69
117NL-B3P2	3/4"	5/8"	1.61"	0.73
117NL-B3P3	3/4"	3/4"	1.79"	0.73
117NL-B3P4	3/4"	1"	2.00"	0.90
117NL-B4P3	1"	3/4"	2.29"	1.23
117NL-B4P4	1"	1"	2.03"	1.30
117NL-B4P5	1"	1 1/4"	2.26"	1.35
117NL-B6P6	1 1/2"	1 1/2"	2.79"	3.50
117NL-B7P7	2"	2"	3.19"	4.50

Submitted by:

Cambridge Brass
P.O. Box 249
140 Orion Place
Cambridge, Ontario
Canada N1R 5V1
Tel: (519) 621-5520
Fax: (519) 621-8674
<http://www.cambridgebrass.com>

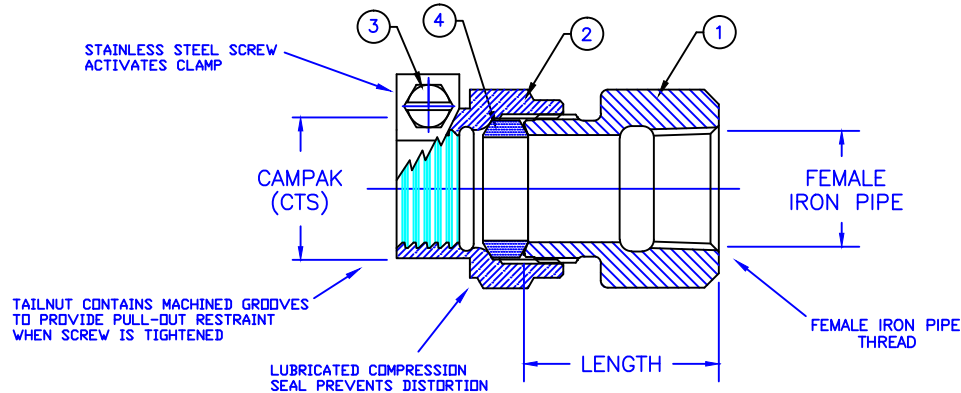


MODEL NO. 117NL

CAMPAK x FEMALE IRON PIPE

ADAPTOR

FOR COPPER OR PLASTIC TUBING (CTS) x THREADED PIPE



PARTS AND MATERIAL:
1. BODY: CAST BRASS, ALLOY C89833
2. CAMPAK NUT: CAST BRASS, ALLOY C83600
3. SCREW: STAINLESS STEEL, ALLOY 304
4. COMPRESSION SEAL: NITRILE RUBBER

FEATURES:

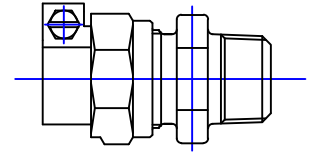
- CONFORMS TO AWWA C800 (ASTM B584 UNS C89833 FOR ALL BRASS PARTS IN CONTACT WITH POTABLE WATER)
- CONFORMS TO ANSI/NSF 61-8
- CONFORMS TO ANSI/NSF 372 (COMPLIANT WITH US Safe Drinking Water Act. PL 111-380)
- BODY AND NUTS PROVIDE WRENCH FLATS FOR INSTALLATION
- 300PSI WORKING PRESSURE

Cambridge Brass considers the information in this submittal form to be correct at the time of publication. Item and option availability, including specifications, are subject to change without notice.

COUPLING SIZE	CATALOG NO.	CAMPAK (CTS)	FEMALE IRON PIPE	LENGTH	APPROX. WT. LBS.
1/2" x 1/2"	117NL-B1F1	1/2"	1/2"	2.18"	0.6
5/8" x 3/4"	117NL-B2F3	5/8"	3/4"	1.51"	0.5
3/4" x 1/2"	117NL-B3F1	3/4"	1/2"	1.59"	0.9
3/4"	117NL-B3F3	3/4"	3/4"	1.65"	0.7
3/4" x 1"	117NL-B3F4	3/4"	1"	1.74"	1.2
1" x 3/4"	117NL-B4F3	1"	3/4"	1.84"	1.2
1"	117NL-B4F4	1"	1"	1.84"	1.1
1 1/2"	117NL-B6F6	1 1/2"	1 1/2"	2.77"	2.6
2"	117NL-B7F7	2"	2"	2.70"	3.8

Submitted by:

Cambridge Brass
P.O. Box 249
140 Orion Place
Cambridge, Ontario
Canada N1R 5V1
Tel: (519) 621-5520
Fax: (519) 621-8674
<http://www.cambridgebrass.com>

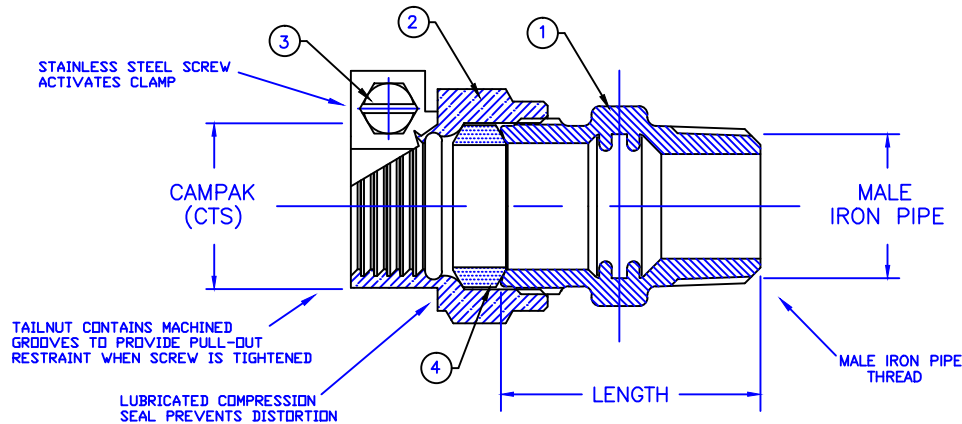


MODEL NO. 117NL

CAMPAK x MALE IRON PIPE

ADAPTOR

FOR COPPER OR PLASTIC TUBING (CTS) x THREADED PIPE



PARTS AND MATERIAL:
1. BODY: CAST BRASS, ALLOY C89833
2. CAMPAK NUT: CAST BRASS, ALLOY C83600
3. SCREW: STAINLESS STEEL, ALLOY 304
4. COMPRESSION SEAL: NITRILE RUBBER

FEATURES:

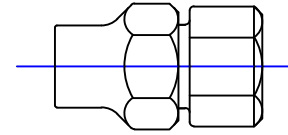
- CONFORMS TO AWWA C800 (ASTM B584 UNS C89833 FOR ALL BRASS PARTS IN CONTACT WITH POTABLE WATER)
- CONFORMS TO ANSI/NSF 61-8
- CONFORMS TO ANSI/NSF 372 (COMPLIANT WITH US Safe Drinking Water Act. PL 111-380)
- BODY AND NUTS PROVIDE WRENCH FLATS FOR INSTALLATION
- 300PSI WORKING PRESSURE

Cambridge Brass considers the information in this submittal form to be correct at the time of publication. Item and option availability, including specifications, are subject to change without notice.

COUPLING SIZE	CATALOG NO.	CAMPAK	MALE IRON PIPE	LENGTH	APPROX. WT. LBS.
1/2" x 1/2"	117NL-B1M1	1/2"	1/2"	2.23"	0.6
1/2" x 3/4"	117NL-B1M3	1/2"	3/4"	2.14"	0.7
5/8" x 3/4"	117NL-B2M3	5/8"	3/4"	2.16"	0.8
3/4" x 1/2"	117NL-B3M1	3/4"	1/2"	1.76"	0.8
3/4"	117NL-B3M3	3/4"	3/4"	1.86"	0.7
3/4" x 1"	117NL-B3M4	3/4"	1"	1.99"	0.8
1" x 3/4"	117NL-B4M3	1"	3/4"	2.02"	1.0
1"	117NL-B4M4	1"	1"	2.08"	1.0
1 1/2"	117NL-B6M6	1 1/2"	1 1/2"	2.53"	2.4
2"	117NL-B7M7	2"	2"	3.01"	3.3

Submitted by:

Cambridge Brass
P.O. Box 249
140 Orion Place
Cambridge, Ontario
Canada N1R 5V1
Tel: (519) 621-5520
Fax: (519) 621-8038
<http://www.cambridgebrass.com>



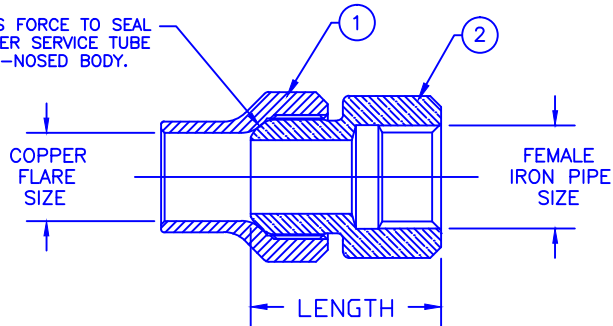
MODEL NO.117NL

COPPER FLARE x
FEMALE IRON PIPE

COUPLING
NO LEAD

COPPER FLARE FOR COPPER SERVICE TUBE x FEMALE IRON PIPE

NUT PROVIDES FORCE TO SEAL
FLARED COPPER SERVICE TUBE
AGAINST BULL-NOSED BODY.



PARTS AND MATERIAL:

1. COUPLING BODY – CAST BRASS, NO LEAD ALLOY C89833
2. COPPER FLARE NUT – CAST BRASS, ALLOY C83600

FEATURES:

- CONFORMS TO AWWA C800 (ASTM B584 UNS C89833 FOR ALL BRASS PARTS IN CONTACT WITH POTABLE WATER)
- CONFORMS TO ANSI/NSF 61-8
- CONFORMS TO ANSI/NSF 372 (COMPLIANT WITH US Safe Drinking Water Act. PL 111-380)
- BODY AND NUTS PROVIDE WRENCH FLATS FOR INSTALLATION
- 300PSI WORKING PRESSURE

ORDERING INFORMATION:

LESS NUT = ADD "LN" TO END OF CATALOG NO.

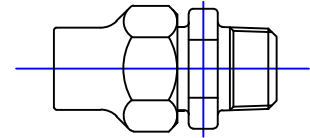
Cambridge Brass considers the information in this submittal form to be correct at the time of publication. Item and option availability, including specifications, are subject to change without notice.

COUPLING SIZE	CATALOG NO.	COPPER FLARE	FEMALE IRON PIPE	LENGTH	APPROX. WT. LBS.
1/2" x 3/4"	117NL-C1F3	1/2"	3/4"	2.19"	1.2
3/4" x 1/2"	117NL-C3F1	3/4"	1/2"	1.43"	0.8
3/4"	117NL-C3F3	3/4"	3/4"	1.94"	0.8
3/4" x 1"	117NL-C3F4	3/4"	1"	2.00"	1.0
1" x 3/4"	117NL-C4F3	1"	3/4"	2.22"	1.3
1"	117NL-C4F4	1"	1"	2.18"	1.2
1" x 1 1/4"	117NL-C4F5	1"	1 1/4"	1.84"	1.0
1 1/2"	117NL-C6F6	1 1/2"	1 1/2"	2.16"	2.8
2"	117NL-C7F7	2"	2"	2.68"	5.0

Submitted by:

FILE: SUBMITTAL/117NL-C_F_.DWG
DEC. 2014

Cambridge Brass
P.O. Box 249
140 Orion Place
Cambridge, Ontario
Canada N1R 5V1
Tel: (519) 621-5520
Fax: (519) 621-8674
<http://www.cambridgebrass.com>

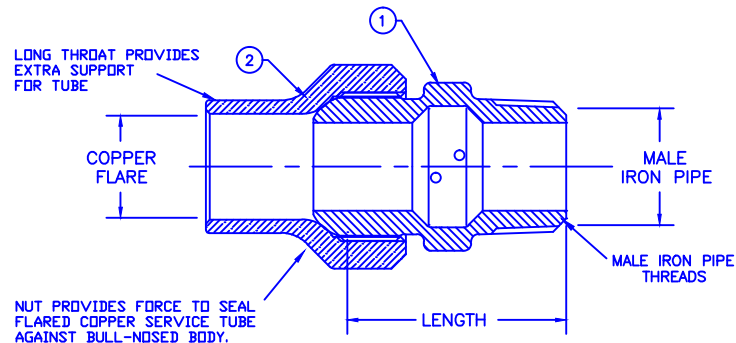


MODEL NO. 117NL

COPPER FLARE x
MALE IRON PIPE

ADAPTOR

COPPER FLARE FOR COPPER SERVICE TUBE x MALE IRON PIPE



PARTS AND MATERIAL:
1. BODY: CAST BRASS, ALLOY C89833
2. NUT: CAST BRASS, ALLOY C83600

FEATURES:

- CONFORMS TO AWWA C800 (ASTM B584 UNS C89833 FOR ALL BRASS PARTS IN CONTACT WITH POTABLE WATER)
- CONFORMS TO ANSI/NSF 61-8
- CONFORMS TO ANSI/NSF 372 (COMPLIANT WITH US Safe Drinking Water Act. PL 111-380)
- BODY AND NUTS PROVIDE WRENCH FLATS FOR INSTALLATION
- 300PSI WORKING PRESSURE

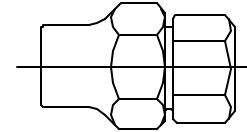
ORDERING INFORMATION:
LESS NUT = ADD "LN" TO END OF CATALOG NO.

Cambridge Brass considers the information in this submittal form to be correct at the time of publication. Item and option availability, including specifications, are subject to change without notice.

COUPLING SIZE	CATALOG NO.	COPPER FLARE	MALE IRON PIPE	LENGTH	APPROX. WT. LBS.
1/2"	117NL-C1M1	1/2"	1/2"	2.17"	0.6
1/2" x 3/4"	117NL-C1M3	1/2"	3/4"	2.10"	0.6
5/8" x 1/2"	117NL-C2M1	5/8"	1/2"	2.16"	0.7
5/8" x 3/4"	117NL-C2M3	5/8"	3/4"	2.39"	0.6
3/4" x 1/2"	117NL-C3M1	3/4"	1/2"	2.08"	0.8
3/4"	117NL-C3M3	3/4"	3/4"	2.38"	0.8
3/4" x 1"	117NL-C3M4	3/4"	1"	2.20"	0.9
1" x 3/4"	117NL-C4M3	1"	3/4"	2.31"	1.2
1"	117NL-C4M4	1"	1"	2.44"	1.2
1 1/4"	117NL-C5M5	1 1/4"	1 1/4"	2.98"	2.6
1 1/2"	117NL-C6M6	1 1/2"	1 1/2"	3.06"	3.0
2"	117NL-C7M7	2"	2"	3.68"	5.3

Submitted by:

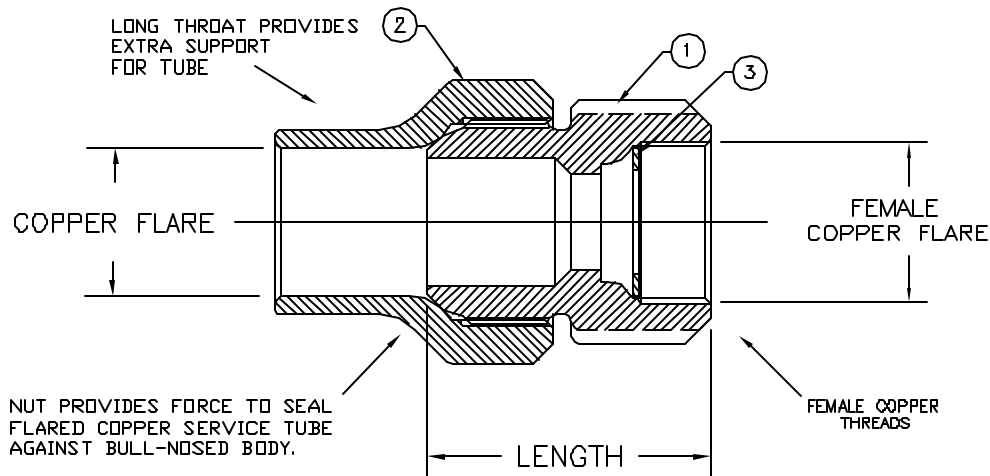
Cambridge Brass
P.O. Box 249
140 Orion Place
Cambridge, Ontario
Canada N1R 5V1
Tel: (519) 621-5520
Fax: (519) 621-8674
<http://www.cambridgebrass.com>



MODEL NO. 117NL

COPPER FLARE x
FEMALE COPPER FLARE

ADAPTOR



PARTS AND MATERIAL:

1. BODY: CAST BRASS, ALLOY C89833
2. COPPER FLARE NUT: CAST BRASS, ALLOY C83600
3. SEALING WASHER: COPPER

FEATURES:

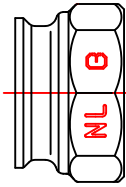
- ALL COMPONENTS CONFORM TO AWWA STANDARD C800-05 (ASTM B-584 UNS NO C89833 FOR BRASS IN CONTACT WITH POTABLE WATER, AND ASTM B-62 AND B-584 UNS NO C83600 FOR ALL OTHER BRASS).
- CSA CLASSIFIED TO ANSI/NSF STANDARD 61-8.
- BODY PROVIDES LARGE, RUGGED WRENCH FLATES FOR PROPER INSTALLATION.

Cambridge Brass considers the information in this submittal form to be correct at the time of publication. Item and option availability, including specifications, are subject to change without notice.

CATALOG NO.	COPPER FLARE	FEMALE COPPER FLARE	LENGTH	APPROX. WT. LBS.
117NL-C3P4	3/4"	1"	2.19"	0.9
117NL-C4P3	1"	3/4"	2.22"	1.4

Submitted by:

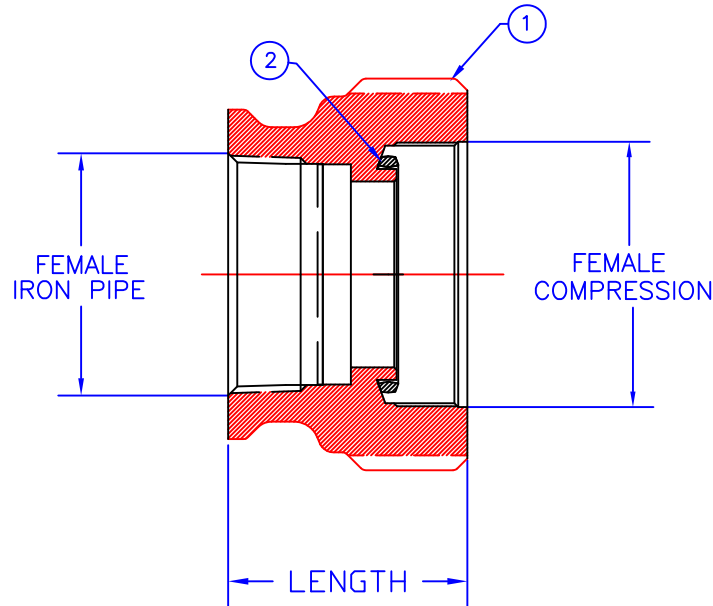
Cambridge Brass
P.O. Box 249
140 Orion Place
Cambridge, Ontario
Canada N1R 5V1
Tel: (519) 621-5520
Fax: (519) 621-8674
<http://www.cambridgebrass.com>



MODEL NO. 117NL

FEMALE IRON PIPE x
FEMALE COMPRESSION

ADAPTOR



PARTS AND MATERIAL:

1. BODY: CAST BRASS, ALLOY C89833
2. SEAL: NITRILE RUBBER NSF APPROVED

FEATURES:

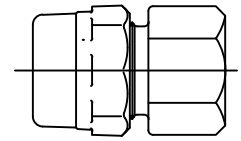
- MANUFACTURED IN COMPLIANCE WITH AWWA STANDARD C800-05 (ASTM B-62 AND ASTM B-584, UNS NO C89833 (NO LEAD BRASS).
- CSA CLASSIFIED TO ANSI/NSF STANDARD 61-8.
- BODY PROVIDES LARGE, RUGGED WRENCH FLATES FOR PROPER INSTALLATION.

Cambridge Brass considers the information in this submittal form to be correct at the time of publication. Item and option availability, including specifications, are subject to change without notice.

CATALOG NO.	FEMALE IRON PIPE	FEMALE COMPRESSION	LENGTH	APPROX. WT. LBS.
117NL-F606	1-1/2"	1-1/2"	2.25"	
117NL-F707	2"	2"	2.38"	

Submitted by:

Cambridge Brass
P.O. Box 249
140 Orion Place
Cambridge, Ontario
Canada N1R 5V1
Tel: (519) 621-5520
Fax: (519) 621-8674
<http://www.cambridgebrass.com>

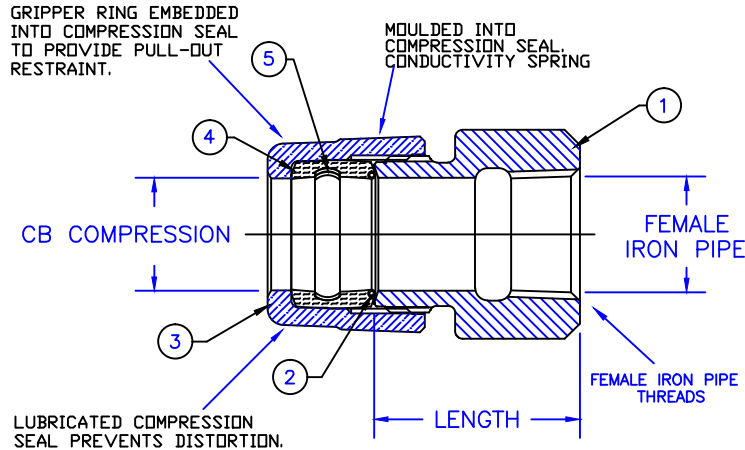


MODEL NO. 117NL

CB COMPRESSION x
FEMALE IRON PIPE

NO LEAD ADAPTOR

FOR COPPER OR PLASTIC TUBING (CTS) x THREADED PIPE



FEATURES:

- MANUFACTURED IN COMPLIANCE WITH AWWA STANDARD C800 (ASTM B-584, UNS C89833).
- CONFORMS TO ANSI/NSF 61-8
- CONFORMS TO ANSI/NSF 372 (COMPLIANT WITH US Safe Drinking Water Act, PL 111-380)
- 300PSI WORKING PRESSURE
- BODY DESIGN PROVIDES LARGE RUGGED WRENCH FLATS FOR PROPER INSTALLATION.

PARTS AND MATERIAL:

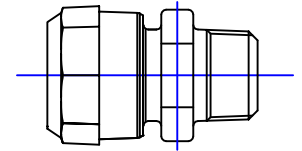
1. BODY: CAST BRASS, ALLOY C89833
2. CONDUCTOR SPRING: BRASS
3. COMPRESSION NUT: CAST BRASS, ALLOY C83600
4. COMPRESSION SEAL: EPDM RUBBER
5. GRIPPER: STAINLESS STEEL, ALLOY 304

Cambridge Brass considers the information in this submittal form to be correct at the time of publication. Item and option availability, including specifications, are subject to change without notice.

COUPLING SIZE	CATALOG NO.	CB COMPRESSION	FEMALE IRON PIPE	LENGTH	APPROX. WT. LBS.
1/2" x 1/2"	117NL-H1F1	1/2"	1/2"	2.03"	
1/2" x 3/4"	117NL-H1F3	1/2"	3/4"	2.14"	
5/8" x 1/2"	117NL-H2F1	5/8"	1/2"	2.23"	
5/8" x 3/4"	117NL-H2F3	5/8"	3/4"	1.31"	
3/4" x 1/2"	117NL-H3F1	3/4"	1/2"	1.59"	0.8
3/4"	117NL-H3F3	3/4"	3/4"	1.65"	0.7
3/4" x 1"	117NL-H3F4	3/4"	1"	1.74"	0.9
1" x 3/4"	117NL-H4F3	1"	3/4"	1.84"	1.3
1"	117NL-H4F4	1"	1"	1.84"	1.2
1 1/4" x 1"	117NL-H5F4	1 1/4"	1"	2.04"	
1 1/4"	117NL-H5F5	1 1/4"	1 1/4"	2.48"	
1 1/2"	117NL-H6F4	1 1/2"	1"	2.21"	
1 1/2"	117NL-H6F6	1 1/2"	1 1/2"	2.77"	2.3
2"	117NL-H7F7	2"	2"	2.70"	3.1

Submitted by:

Cambridge Brass
P.O. Box 249
140 Orion Place
Cambridge, Ontario
Canada N1R 5V1
Tel: (519) 621-5520
Fax: (519) 621-8674
<http://www.cambridgebrass.com>

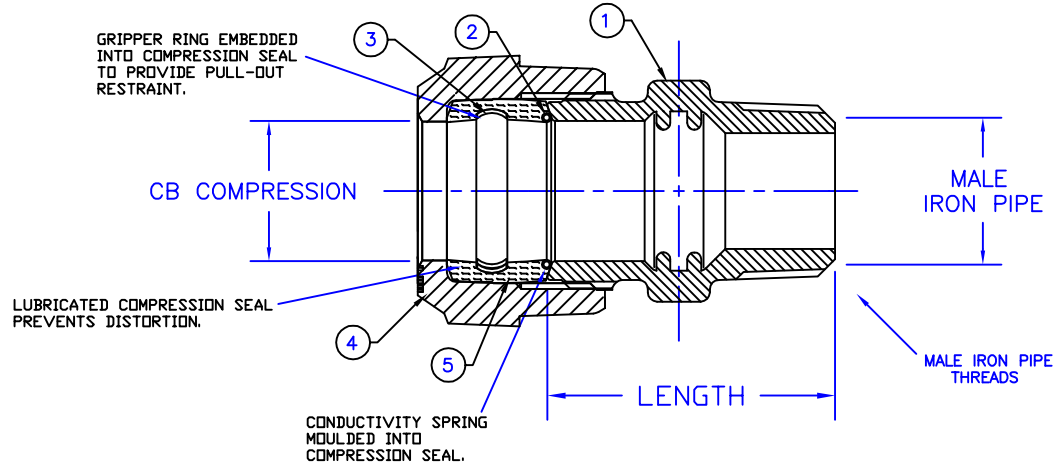


MODEL NO. 117NL

CB COMPRESSION x
MALE IRON PIPE

NO LEAD ADAPTOR

FOR COPPER OR PLASTIC (CTS) TUBING x THREADED PIPE



PARTS AND MATERIAL:

1. BODY: CAST BRASS, ALLOY C89833
2. CONDUCTOR SPRING: BRASS
3. GRIPPER: STAINLESS STEEL, TYPE 304
4. COMPRESSION NUT: CAST BRASS, ALLOY C83600
5. COMPRESSION SEAL: EPDM RUBBER

FEATURES:

- MANUFACTURED IN COMPLIANCE WITH AWWA STANDARD C800 (ASTM B-584, UNS NO C89833).
- CONFORMS TO ANSI/NSF 61-8
- CONFORMS TO ANSI/NSF 372 (COMPLIANT WITH US Safe Drinking Water Act. PL 111-380)
- 300PSI WORKING PRESSURE
- BODY DESIGN PROVIDES LARGE RUGGED WRENCH FLATS FOR PROPER INSTALLATION.

Cambridge Brass considers the information in this submittal form to be correct at the time of publication. Item and option availability, including specifications, are subject to change without notice.

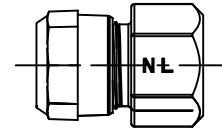
COUPLING SIZE	CATALOG NO.	CB COMPRESSION	MALE IRON PIPE	LENGTH	APPROX. WT. LBS.
1/2" x 1/2"	117NL-H1M1	1/2"	1/2"	2.12"	0.6
1/2" x 3/4"	117NL-H1M3	1/2"	3/4"	2.09"	0.7
5/8" x 1/2"	117NL-H2M1	5/8"	1/2"	1.98"	0.6
5/8" x 3/4"	117NL-H2M3	5/8"	3/4"	1.95"	0.7
3/4" x 1/2"	117NL-H3M1	3/4"	1/2"	2.12"	0.7
3/4"	117NL-H3M3	3/4"	3/4"	2.09"	0.7
3/4" x 1"	117NL-H3M4	3/4"	1"	2.25"	0.8
1" x 3/4"	117NL-H4M3	1"	3/4"	2.18"	1.1
1"	117NL-H4M4	1"	1"	2.24"	1.1
1 1/4" x 1"	117NL-H5M4	1 1/4"	1"	2.41"	2.1
1 1/4"	117NL-H5M5	1 1/4"	1 1/4"	2.83"	2.5
1 1/2" x 1"	117NL-H6M4	1 1/2"	1"	2.41"	1.5
1 1/2" x 1 1/4"	117NL-H6M5	1 1/2"	1 1/4"	2.67"	1.8
1 1/2"	117NL-H6M6	1 1/2"	1 1/2"	2.57"	2.0
2"	117NL-H7M7	2"	2"	3.04"	2.8

Submitted by:

Cambridge Brass
P.O. Box 249
140 Orion Place
Cambridge, Ontario
Canada N1R 5V1
Tel: (519) 621-5520
Fax: (519) 621-8674
<http://www.cambridgebrass.com>



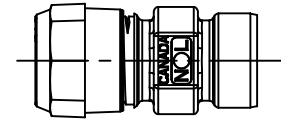
ADAPTER STYLE



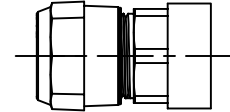
MODEL NO. 117NL

CB COMPRESSION x
FEMALE COPPER FLARE

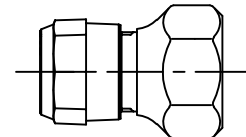
117NL-H2P2/117NL-H3P2



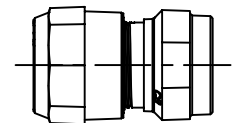
117NL-H3P1



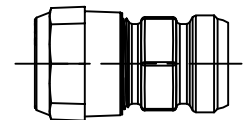
117NL-H3P3



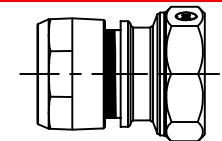
117NL-H3P4



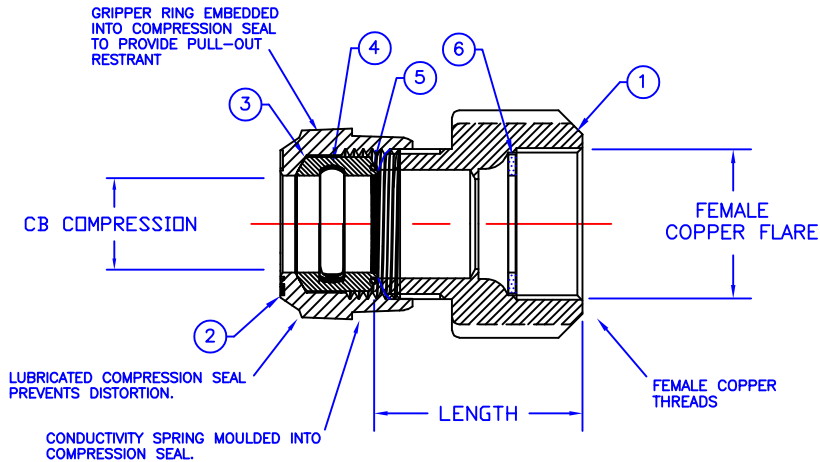
117NL-H4P4



117NL-H4P3



117NL-H6P6/117NL-H7P7



PARTS AND MATERIAL:

1. BODY: CAST BRASS, ALLOY C89833
2. COMPRESSEION NUT: CAST BRASS, ALLOY C83600
3. COMPRESSION SEAL: EPDM
4. GRIPPER: STAINLESS STEEL, ALLOY 302
5. CONDUCTOR SPRING: BRASS
6. SEALING WASHER: COPPER

FEATURES

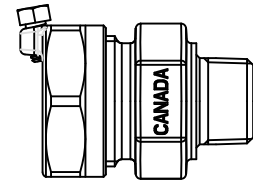
- CONFORMS TO AWWA C800 (ASTM B584 UNS C89833 FOR BRASS PARTS IN CONTACT WITH POTABLE WATER)
- CONFORMS TO ANSI/NSF 61-8
- CONFORMS TO ANSI/NSF 372 (COMPLIANT WITH US Safe Drinking Water Act. PL 111-380)
- BODY AND NUTS PROVIDE WRENCH FLATS FOR INSTALLATION
- 300PSI WORKING PRESSURE

Cambridge Brass considers the information in this submittal form to be correct at the time of publication. Item and option availability, including specifications, are subject to change without notice.

CATALOG NO.	CB COMPRESSION	FEMALE COPPER FLARE	LENGTH	APPROX. WT. LBS.
117NL-H2P2	5/8"	5/8"	1.47"	0.65
117NL-H3P1	3/4"	1/2"	2.08"	0.71
117NL-H3P2	3/4"	5/8"	1.61"	0.70
117NL-H3P3	3/4"	3/4"	1.79"	0.70
117NL-H3P4	3/4"	1"	2.00"	0.87
117NL-H4P3	1"	3/4"	2.29"	1.20
117NL-H4P4	1"	1"	2.03"	1.25
117NL-H6P6	1 1/2"	1 1/2"	2.79"	3.20
117NL-H7P7	2"	2"	3.19"	4.25

Submitted by:

Cambridge Brass
P.O. Box 249
140 Orion Place
Cambridge, Ontario
Canada N1R 5V1
Tel: (519) 621-5520
Fax: (519) 621-8674
<http://www.cambridgebrass.com>

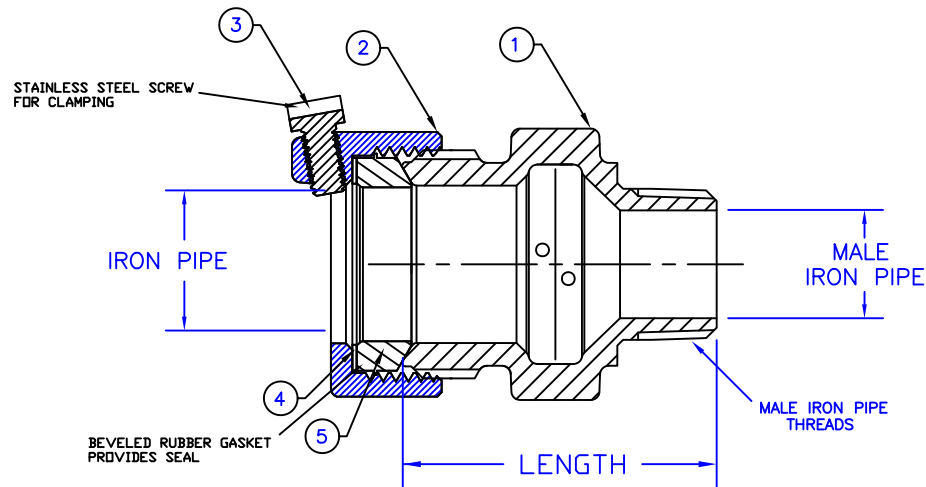


MODEL NO. 117NL

IRON PIPE x
MALE IRON PIPE

ADAPTOR

FOR IRON PIPE x THREADED PIPE



PARTS AND MATERIAL:

1. BODY: CAST BRASS, ALLOY C89833
2. IRON PIPE NUT: CAST BRASS, ALLOY C83600
3. SCREW: STAINLESS STEEL, ALLOY 304
4. ANTI-FRICTION WASHER: HDPE
5. GASKET: RUBBER COMPOUND NSF-61

FEATURES:

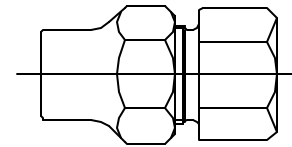
- MANUFACTURED IN COMPLIANCE WITH AWWA STANDARD C800-05 (ASTM B-62 AND ASTM B-584, UNS NO C89833(NL), C83600-85-5-5-5).
- <X> CSA CLASSIFIED TO ANSI/NSF STANDARD 61-8.
- BODY PROVIDES LARGE, RUGGED WRENCH FLATS FOR PROPER INSTALLATION.

Cambridge Brass considers the information in this submittal form to be correct at the time of publication. Item and option availability, including specifications, are subject to change without notice.

COUPLING SIZE	CATALOG NO.	IRON PIPE COMPRESSION	MALE IRON PIPE	LENGTH	APPROX. WT. LBS.	CLASSIFIED NSF 61-8
1/2"	117NL-IP1M1	1/2"	1/2"	1.71"		X
3/4"	117NL-IP3M3	3/4"	3/4"	2.18"		X

Submitted by:

Cambridge Brass
P.O. Box 249
140 Orion Place
Cambridge, Ontario
Canada N1R 5V1
Tel: (519) 621-5520
Fax: (519) 621-8674
<http://www.cambridgebrass.com>

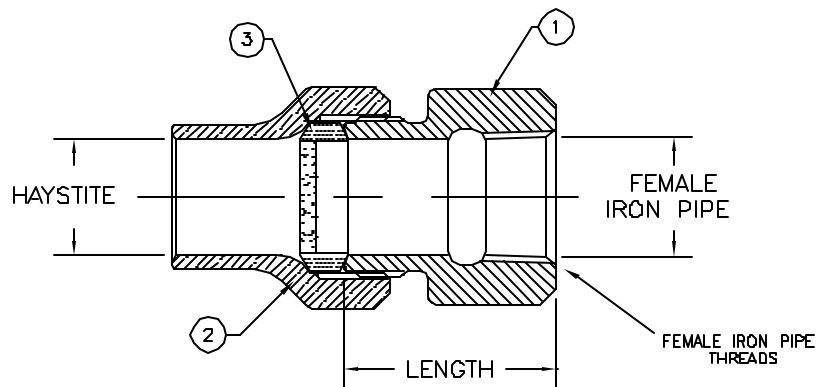


MODEL NO. 117NL

HAYSTITE x FEMALE IRON PIPE

ADAPTOR

FOR COPPER OR PLASTIC TUBING (CTS) x THREADED PIPE



PARTS AND MATERIAL:

1. BODY: CAST BRASS, ALLOY C89833
2. COMPRESSION NUT: CAST BRASS, ALLOY C83600
3. COMPRESSION SEAL: NITRILE RUBBER, WITH GRIT

FEATURES:

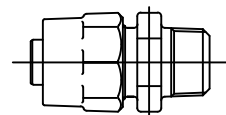
- ALL COMPONENTS CONFORM TO AWWA STANDARD C800-05 (ASTM B-584 UNS NO C89833 FOR BRASS PARTS IN CONTACT WITH POTABLE WATER, AND ASTM B-62 AND B-584 UNS NO C83600 FOR ALL OTHER BRASS PARTS).
- BODY PROVIDES LARGE, RUGGED WRENCH FLATES FOR PROPER INSTALLATION.

Cambridge Brass considers the information in this submittal form to be correct at the time of publication. Item and option availability, including specifications, are subject to change without notice.

COUPLING SIZE	CATALOG NO.	HAYSTITE	FEMALE IRON PIPE	LENGTH	APPROX. WT. LOAD
3/4" x 1/2"	117NL-J3F1	3/4"	1/2"	1.59"	
3/4"	117NL-J3F3	3/4"	3/4"	1.65"	0.8
3/4" x 1"	117NL-J3F4	3/4"	1"	1.74"	
1" x 3/4"	117NL-J4F3	1"	3/4"	1.84"	
1"	117NL-J4F4	1"	1"	1.84"	1.2

Submitted by:

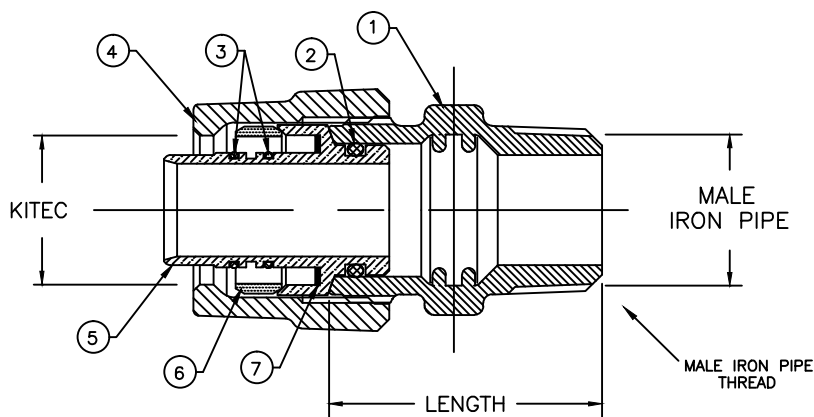
Cambridge Brass
P.O. Box 249
140 Orion Place
Cambridge, Ontario
Canada N1R 5V1
Tel: (519) 621-5520
Fax: (519) 621-8674
<http://www.cambridgebrass.com>



MODEL NO. 117NL

KITEC x MALE IRON PIPE

ADAPTOR



PARTS AND MATERIAL:

1. BODY: NO LEAD CAST BRASS, ALLOY C89833
2. O-RING: NITRILE RUBBER
3. O-RING: NITRILE RUBBER
4. KITEC NUT: CAST BRASS, ALLOY C83600
5. INSERT: NO LEAD CAST BRASS, ALLOY C89833
6. GRIPPER: BRASS, ALLOY C51000
7. INSULATOR: POLYETHYLENE

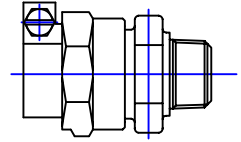
- CONFORMS TO AWWA C800 (ASTM B584 UNS C89833 FOR BRASS PARTS IN CONTACT WITH POTABLE WATER)
- CONFORMS TO ANSI/NSF 61-8
- CONFORMS TO ANSI/NSF 373 (COMPLIANT WITH US Safe Drinking Water Act. PL 111-380)
- BODY AND NUTS PROVIDE WRENCH FLATS FOR INSTALLATION
- 300PSI WORKING PRESSURE

Cambridge Brass considers the information in this submittal form to be correct at the time of publication. Item and option availability, including specifications, are subject to change without notice.

COUPLING SIZE	CATALOG NO.	KITEC	MALE IRON PIPE	LENGTH	APPROX. WT. LBS.
3/4"	117NL-K3M3	3/4"	3/4"	2.09"	0.7
3/4" x 1"	117NL-K3M4	3/4"	1"	1.98"	0.8
1" x 3/4"	117NL-K4M3	1"	3/4"	2.02"	1.2
1"	117NL-K4M4	1"	1"	2.08"	1.2

Submitted by:

Cambridge Brass
P.O. Box 249
140 Orion Place
Cambridge, Ontario
Canada N1R 5V1
Tel: (519) 621-5520
Fax: (519) 621-8674
<http://www.cambridgebrass.com>

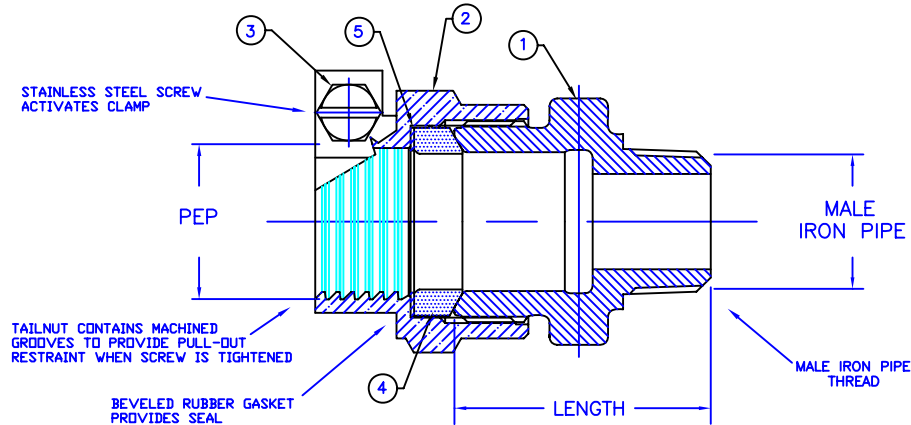


MODEL NO. 117NL

PEP x MALE IRON PIPE

ADAPTOR

FOR POLYETHYLENE PIPE (PEP) SDR-7 X MIP



PARTS AND MATERIAL:

1. BODY: CAST BRASS, NO LEAD ALLOY C89833
2. PEP NUT: CAST BRASS, ALLOY C83600
3. SCREW: STAINLESS STEEL, ALLOY 304
4. GASKET: RUBBER COMPOUND NSF-61
5. ANTI-FRICTION WASHER: HDPE

FEATURES:

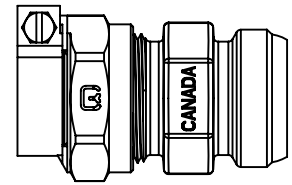
- MANUFACTURED IN COMPLIANCE WITH AWWA STANDARD C800-05
- <X> CSA CLASSIFIED TO ANSI/NSF STANDARD 61-8.
- BODY PROVIDES LARGE, RUGGED WRENCH FLATS FOR PROPER INSTALLATION.

Cambridge Brass considers the information in this submittal form to be correct at the time of publication. Item and option availability, including specifications, are subject to change without notice.

ADAPTER SIZE	CATALOG NO.	PEP	MALE IRON PIPE	LENGTH	APPROX. WT. LBS.	CLASSIFIED NSF 61-8
3/4"	117NL-PE3M3	3/4"	3/4"	2.02"		X
1"	117NL-PE4M4	1"	1"	2.41"		X
1 1/4"	117NL-PE5M5	1 1/4"	1 1/4"	2.66"		X
1 1/2"	117NL-PE6M6	1 1/2"	1 1/2"	2.78"		X
2"	117NL-PE7M7	2"	2"	3.18"		X

Submitted by:

Cambridge Brass
P.O. Box 249
140 Orion Place
Cambridge, Ontario
Canada N1R 5V1
Tel: (519) 621-5520
Fax: (519) 621-8674
<http://www.cambridgebrass.com>

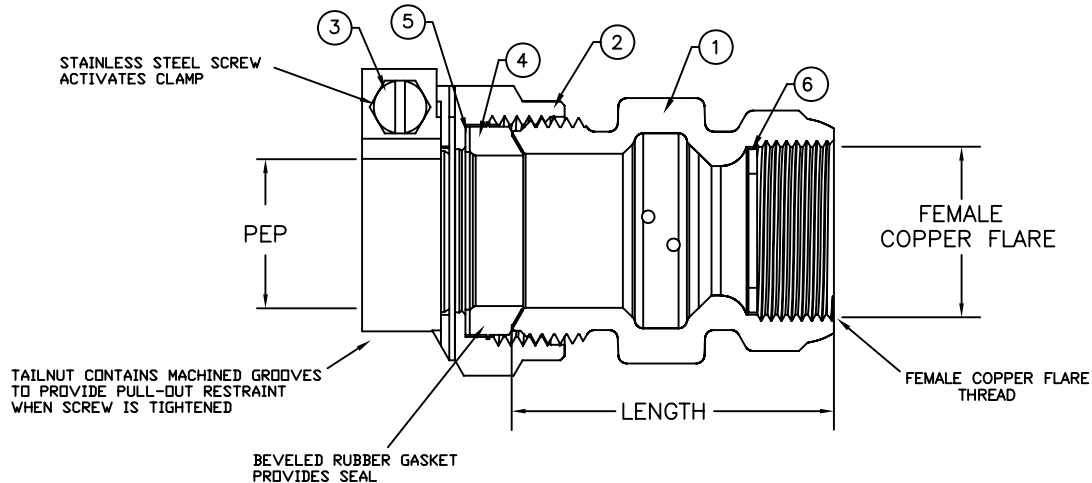


MODEL NO. 117NL

PEP x COPPER PIPE

ADAPTOR

FOR POLYETHYLENE PIPE (PEP) x COPPER PIPE



PARTS AND MATERIAL:

1. COUPLING BODY: NO LEAD CAST BRASS, ALLOY C89833
2. PEP NUT: CAST BRASS, ALLOY C83600
3. SCREW: STAINLESS STEEL, ALLOY 304
4. GASKET: RUBBER COMPOUND NSF-61
5. ANTI-FRICTION WASHER: HDPE
6. COPPER WASHER

FEATURES:

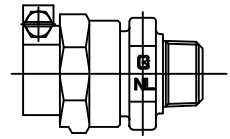
- MANUFACTURED IN COMPLIANCE WITH AWWA STANDARD C800-05 (ASTM B-62 AND ASTM B-584, UNS NO C83600-85-5-5-5).
- <X> CSA CLASSIFIED TO ANSI/NSF STANDARD 61-8.
- BODY PROVIDES LARGE, RUGGED WRENCH FLATS FOR PROPER INSTALLATION.

Cambridge Brass considers the information in this submittal form to be correct at the time of publication. Item and option availability, including specifications, are subject to change without notice.

COUPLING SIZE	CATALOG NO.	PEP	COPPER PIPE	LENGTH	APPROX. WT. LBS.	CLASSIFIED NSF 61-8
3/4"	117NL-PE3P3	3/4"	3/4"	2.28"		X

Submitted by:

Cambridge Brass
P.O. Box 249
140 Orion Place
Cambridge, Ontario
Canada N1R 5V1
Tel: (519) 621-5520
Fax: (519) 621-8674
<http://www.cambridgebrass.com>

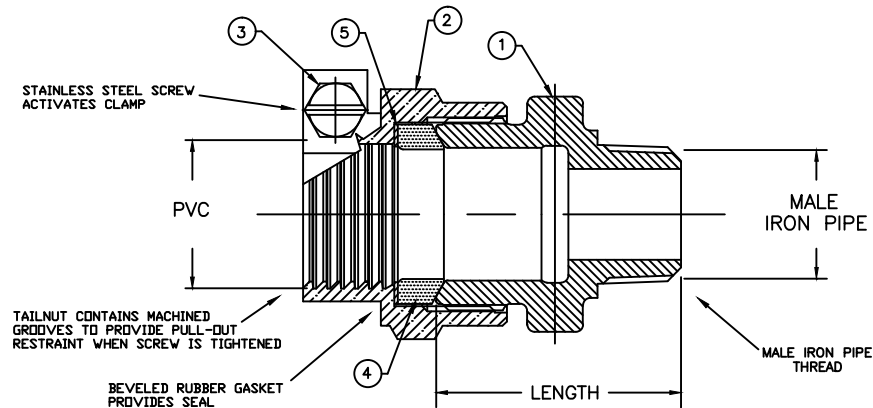


MODEL NO. 117NL

PVC x MALE IRON PIPE

ADAPTOR

FOR PVC PIPE x THREADED PIPE



PARTS AND MATERIAL:

1. BODY: CAST BRASS, ALLOY C89833
2. PVC NUT: CAST BRASS, ALLOY C83600
3. SCREW: STAINLESS STEEL, ALLOY 304
4. GASKET: RUBBER COMPOUND NSF-61
5. ANTI-FRICTION WASHER: HDPE

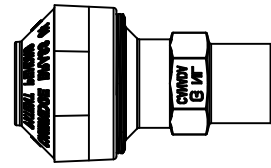
FEATURES:

- CONFORMS TO AWWA C800 (ASTM B584 UNS C89833 FOR ALL BRASS PARTS IN CONTACT WITH POTABLE WATER)
- CONFORMS TO ANSI/NSF 61-8
- CONFORMS TO ANSI/NSF 372 (COMPLIANT WITH US Safe Drinking Water Act. PL 111-380)
- BODY AND NUTS PROVIDE WRENCH FLATS FOR INSTALLATION
- 300PSI WORKING PRESSURE

Cambridge Brass considers the information in this submittal form to be correct at the time of publication. Item and option availability, including specifications, are subject to change without notice.

COUPLING SIZE	CATALOG NO.	PVC	MALE IRON PIPE	LENGTH	APPROX. WT. LBS.
3/4"	117NL-PJ3M3	3/4"	3/4"	2.02"	0.9
1" X 3/4"	117NL-PJ4M3	1"	3/4"	2.47"	1.4
1"	117NL-PJ4M4	1"	1"	2.41"	1.4
1 1/2" X 1"	117NL-PJ6M4	1 1/2"	1"	2.77"	2.2
1 1/2"	117NL-PJ6M6	1 1/2"	1 1/2"	2.78"	2.6
2"	117NL-PJ7M7	2"	2"	3.18"	3.4

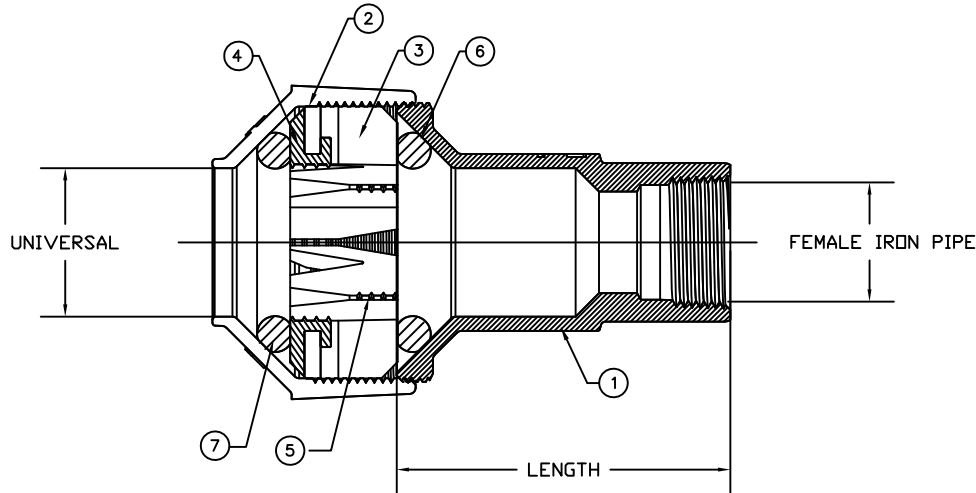
Cambridge Brass
P.O. Box 249
140 Orion Place
Cambridge, Ontario
Canada N1R 5V1
Tel: (519) 621-5520
Fax: (519) 621-8674
<http://www.cambridgebrass.com>



MODEL NO. 117NL

U x F

CAMBRIDGE COUPLING



PARTS AND MATERIAL:

1. COUPLING BODY: CAST BRASS, NO LEAD ALLOY C89833
2. NUT: CAST BRASS, NO LEAD ALLOY C89833
3. GRIPPER BODY: MATERIAL PLASTIC, NORYL
4. TOOTH (FIRST ROW): 301 STAINLESS STEEL
5. TOOTH (SECOND ROW): 301 STAINLESS STEEL
6. PRESSURE SEAL: EPDM RUBBER
7. DIRT SEAL: EPDM RUBBER

FEATURES:

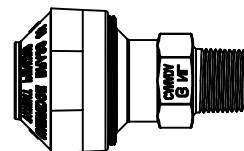
- ALL COMPONENTS CONFORM TO AWWA C800-05 (ASTM B-584 UNS NO C89833 FOR ALL BRASS PARTS)
- CSA CLASSIFIED TO ANSI/NSF STANDARD 61-8.
- BODY PROVIDES LARGE, RUGGED WRENCH FLATS FOR PROPER INSTALLATION.
- 300 PSI WORKING PRESSURE

Cambridge Brass considers the information in this submittal form to be correct at the time of publication. Item and option availability, including specifications, are subject to change without notice.

CATALOG NO.	U	F	RANGE[IN]	LENGTH[IN]	APROX.WEIGHT[LB]
117NL-U2F3	5/8"	3/4"	.600"-.900" x 3/4"	3.26	1.79
117NL-U3F3	3/4"	3/4"	.735"-1.135" x 3/4"	3.26	1.95
117NL-U4F4	1"	1"	1.000"-1.400" X 1"	3.36	2.70
117NL-U5F4	1 1/4"	1"	1.300"-1.700" x 1"	3.36	3.02
117NL-U5F6	1 1/4"	1 1/2"	1.300"-1.700" x 1 1/2"	3.36	3.33
117NL-U6F6	1 1/2"	1 1/2"	1.600"-2.000" x 1 1/2"	3.76	3.29
117NL-U7F6	2"	1 1/2"	1.969"-2.381" x 1 1/2"	3.76	3.68

Submitted by:

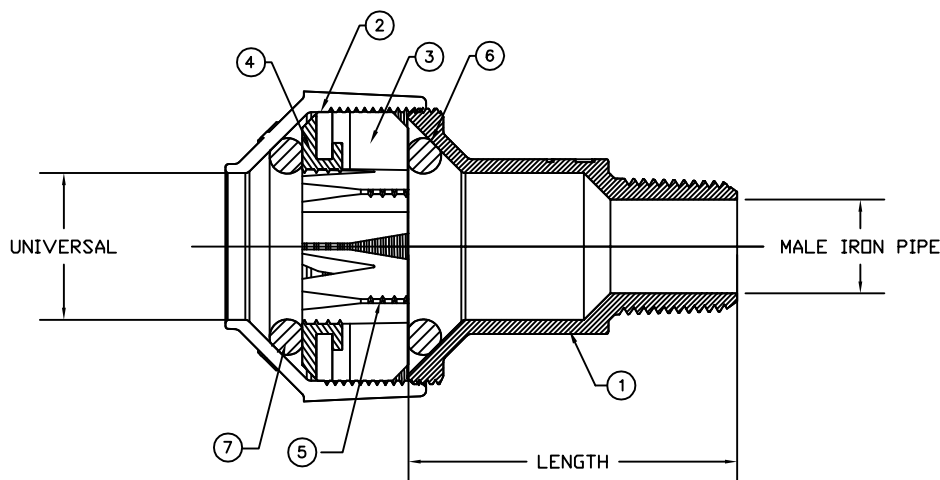
Cambridge Brass
P.O. Box 249
140 Orion Place
Cambridge, Ontario
Canada N1R 5V1
Tel: (519) 621-5520
Fax: (519) 621-8674
<http://www.cambridgebrass.com>



MODEL NO. 117NL

U x M

CAMBRIDGE COUPLING



PARTS AND MATERIAL:

1. COUPLING BODY: CAST BRASS, NO LEAD ALLOY C89833
2. NUT: CAST BRASS, NO LEAD ALLOY C89833
3. GRIPPER BODY: MATERIAL PLASTIC
4. TOOTH (FIRST ROW): 301 STAINLESS STEEL
5. TOOTH (SECOND ROW): 301 STAINLESS STEEL
6. PRESSURE SEAL: EPDM RUBBER
7. DIRT SEAL: EPDM RUBBER

FEATURES:

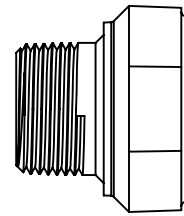
- CONFORMS TO AWWA C800 (ASTM B584 UNS C89833 FOR ALL BRASS PARTS IN CONTACT WITH POTABLE WATER)
- CONFORMS TO ANSI/NSF 61-8
- CONFORMS TO ANSI/NSF 372 (COMPLIANT WITH US Safe Drinking Water Act. PL111-380)
- BODY PROVIDES WRENCH FLATS FOR INSTALLATION
- 300 PSI WORKING PRESSURE

Cambridge Brass considers the information in this submittal form to be correct at the time of publication. Item and option availability, including specifications, are subject to change without notice.

CATALOG NO.	U	M	RANGE[IN]	LENGTH[IN]	APROX.WEIGHT[LB]
117NL-U2M3	5/8"	3/4"	.600"-.900" x 3/4"	3.26	1.69
117NL-U3M3	3/4"	3/4"	.735"-1.135" x 3/4"	3.26	1.85
117NL-U4M4	1"	1"	1.000"-1.400" X 1"	3.36	2.57
117NL-U5M4	1 1/4"	1"	1.300"-1.700" X 1"	3.36	2.89
117NL-U5M6	1 1/4"	1 1/2"	1.300"-1.700" X 1 1/2"	3.97	3.49
117NL-U6M6	1 1/2"	1 1/2"	1.600"-2.000" X 1 1/2"	3.97	3.45
117NL-U7M7	2"	2"	1.969"-2.381" X 2"	4.11	4.05

Submitted by:

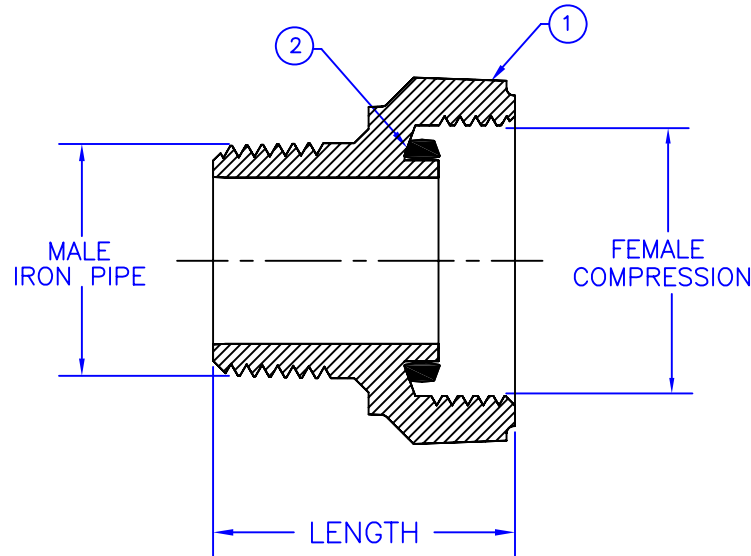
Cambridge Brass
P.O. Box 249
140 Orion Place
Cambridge, Ontario
Canada N1R 5V1
Tel: (519) 621-5520
Fax: (519) 621-8674
<http://www.cambridgebrass.com>



MODEL NO. 117
MODEL NO. 117NL

MALE IRON PIPE x
FEMALE COMPRESSION

ADAPTOR



PARTS AND MATERIAL:

1. BODY: CAST BRASS, ALLOY C89833
2. SEAL: NITRILE RUBBER NSF APPROVED

FEATURES:

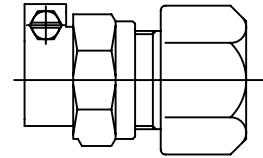
- MANUFACTURED IN COMPLIANCE WITH AWWA STANDARD C800-05
ASTM B-62 AND ASTM B-584, UNS NO C89833 (NO LEAD BRASS)
OR UNS NO C83600 (REGULAR BRASS)
- CSA CLASSIFIED TO ANSI/NSF STANDARD 61-8.
- BODY PROVIDES LARGE, RUGGED WRENCH FLATES FOR PROPER INSTALLATION.
- MAX. WORKING PRESSURE 300 PSI

Cambridge Brass considers the information in this submittal form to be correct at the time of publication.
Item and option availability, including specifications, are subject to change without notice.

CATALOG NO.	MALE IRON PIPE	FEMALE COMPRESSION	LENGTH	APPROX. WT. LBS.
117-03M3	3/4"	3/4"	1.79"	
117-04M4	1"	1"	1.69"	
117-06M6	1-1/2"	1-1/2"	2.63"	
117-07M7	2"	2"	3.25"	

Submitted by:

Cambridge Brass
P.O. Box 249
140 Orion Place
Cambridge, Ontario
Canada N1R 5V1
Tel: (519) 621-5520
Fax: (519) 621-8674
<http://www.cambridgebrass.com>

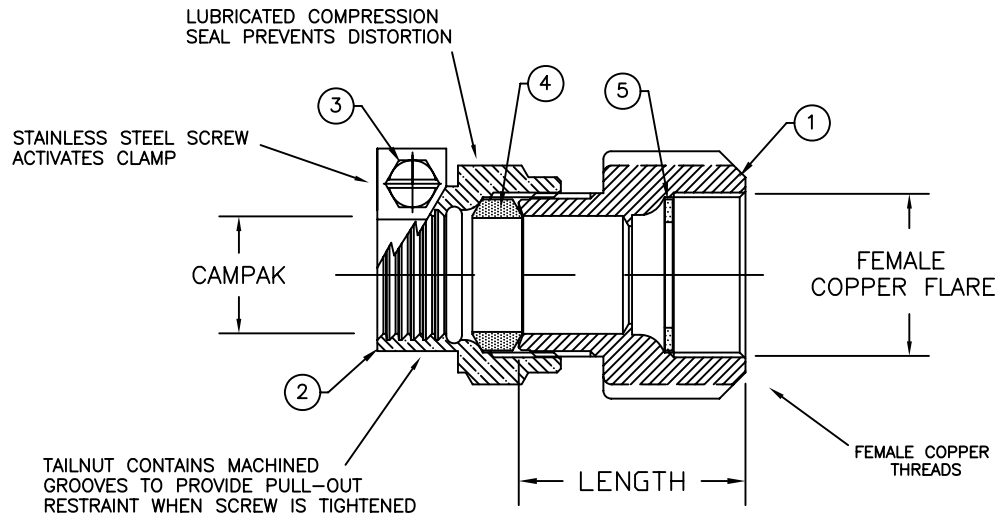


MODEL NO. 117

PJ CAMPAK X
FEMALE COPPER FLARE

ADAPTOR

FOR POLYETHYLENE PIPE, IPS-OD CONTROLLED, PER ASTM D3035 (PEP-SDR)
FOR PVC PIPE, IPS-OD CONTROLLED, PER ASTM D1785, ASTM D2241



PARTS AND MATERIAL:

1. BODY: CAST BRASS, ALLOY C83600
2. COMPRESSION NUT: CAST BRASS, ALLOY C83600
3. SCREW: STAINLESS STEEL, ALLOY 304
4. COMPRESSION SEAL: NITRILE RUBBER
5. SEALING WASHER: COPPER

FEATURES:

- ALL COMPONENTS CONFORM TO AWWA C800-05 (ASTM B-62 AND B-584, UNS NO C83600-85-5-5-5).
- CSA CLASSIFIED TO ANSI/NSF STANDARD 61-8.
- BODY PROVIDES LARGE, RUGGED WRENCH FLATES FOR PROPER INSTALLATION.

Cambridge Brass considers the information in this submittal form to be correct at the time of publication. Item and option availability, including specifications, are subject to change without notice.

CATALOG NO.	CAMPAK	FEMALE COPPER FLARE	LENGTH	APPROX. WT. LBS.
117-PJ3P3	3/4"	3/4"	2.29"	1.0
117-PJ4P4	1"	1"	2.07"	1.0

Submitted by: