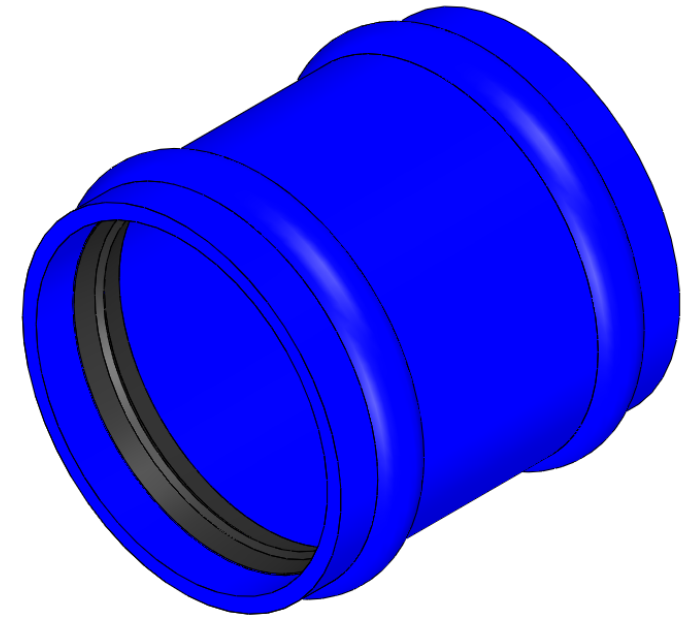
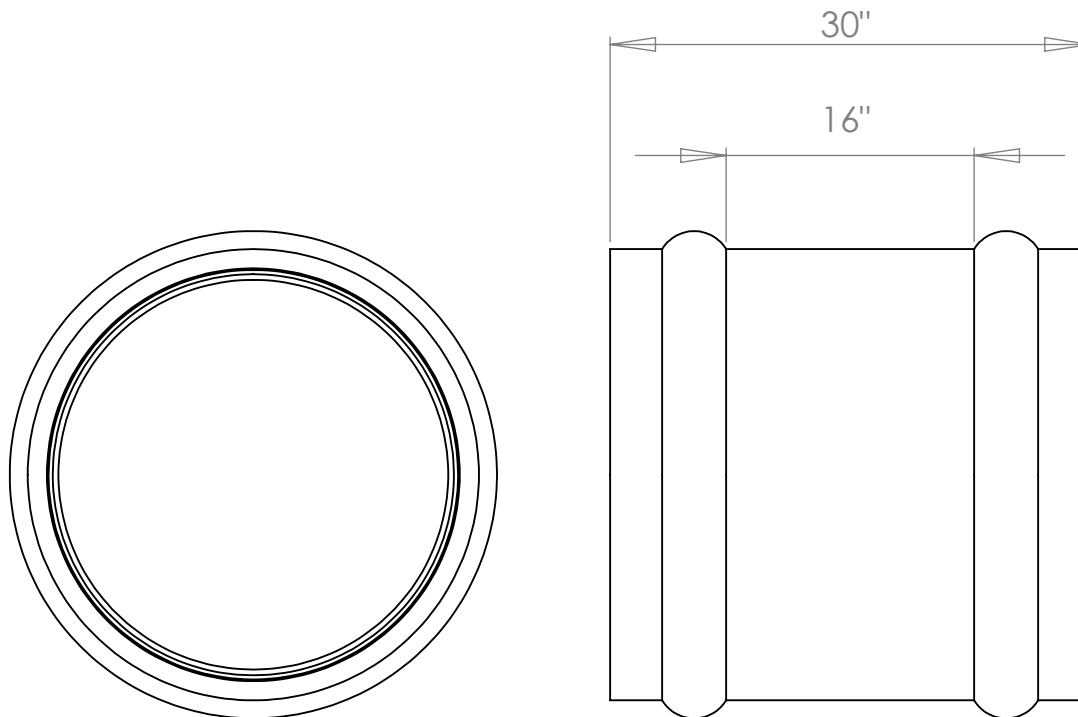


REV	DATE	COMMENTS
0	06/22/11	RELEASED FOR PRODUCTION



BELL RUN O.D.
24" C905 = 28.8"

PROPRIETARY AND CONFIDENTIAL
THE INFORMATION CONTAINED IN THIS DRAWING IS THE SOLE PROPERTY OF GALAXY PLASTICS LTD. ANY REPRODUCTION IN PART OR AS A WHOLE WITHOUT THE WRITTEN PERMISSION OF GALAXY PLASTICS LTD IS PROHIBITED.



UNLESS OTHERWISE SPECIFIED:	
DIMENSIONS ARE IN MM TOLERANCES: FRACTIONAL $\pm 1/64$ ANGULAR: MACH \pm BEND \pm TWO PLACE DECIMAL ± 0.01 THREE PLACE DECIMAL ± 0.001	
INTERPRET GEOMETRIC TOLERANCING PER:	
MATERIAL	PVC
FINISH	N/A
DO NOT SCALE DRAWING	

	NAME	DATE
DRAWN	B.DAVIDSON	06/22/11
CHECKED	N. KONDOLAY	06/22/11
ENG APPR.	E. TERPOCKI	
MFG APPR.	G. OLSON	
Q.A.	J. ANDERSON	
COMMENTS:		

GALAXY PLASTICS

TITLE: 24" C905 DR18
REPAIR COUPLING
GxG

SIZE	DWG. NO.	REV
A	937 /24	0
SCALE: 1:12	WEIGHT:	SHEET 1 OF 1