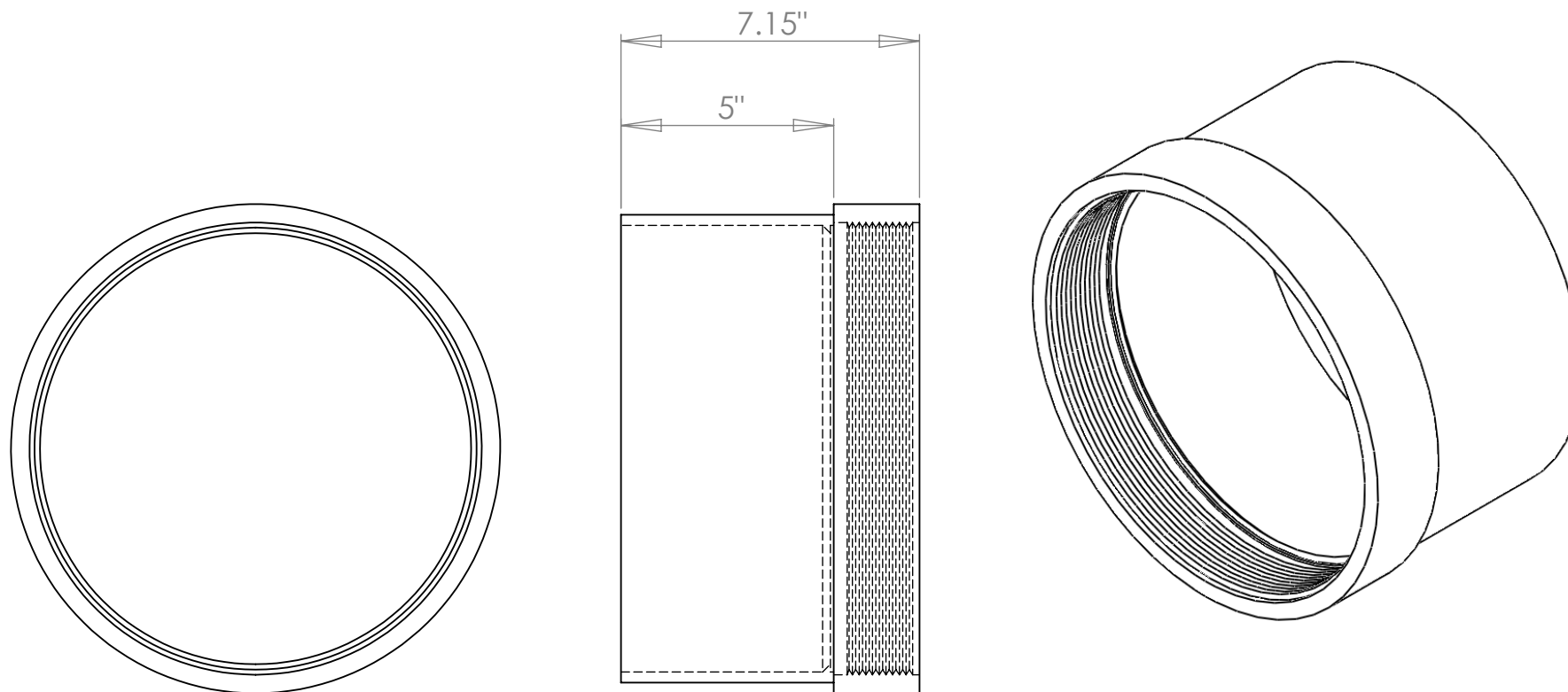


## DISCLAIMER - PLEASE READ

DUE TO VARIOUS FACTORS AFFECTING PRODUCTION, ALL DIMENSIONS ARE APPROXIMATE. DIMENSIONS ARE SUBJECT TO CHANGE WITHOUT NOTICE DUE TO DESIGN OR PRODUCTION MODIFICATIONS.

REV	DATE	COMMENTS
0	01/20/14	RELEASED FOR PRODUCTION



**PROPRIETARY AND CONFIDENTIAL**  
THE INFORMATION CONTAINED IN THIS DRAWING IS THE SOLE PROPERTY OF GALAXY PLASTICS LTD. ANY REPRODUCTION IN PART OR AS A WHOLE WITHOUT THE WRITTEN PERMISSION OF GALAXY PLASTICS LTD IS PROHIBITED.



### UNLESS OTHERWISE SPECIFIED:

DIMENSIONS ARE IN MM  
TOLERANCES:  
FRACTIONAL  $\pm 1/64$   
ANGULAR: MACH  $\pm$  BEND  $\pm$   
TWO PLACE DECIMAL  $\pm 0.01$   
THREE PLACE DECIMAL  $\pm 0.001$

INTERPRET GEOMETRIC  
TOLERANCING PER:

MATERIAL  
PVC

FINISH  
N/A

DO NOT SCALE DRAWING

	NAME	DATE
DRAWN	B.DAVIDSON	01/20/14
CHECKED	N. KONDOLAY	01/20/14
ENG APPR.	E. TERPOCKI	
MFG APPR.	G. OLSON	
Q.A.	J. ANDERSON	
COMMENTS:		

# GALAXY PLASTICS

TITLE: 10" SOLVENT WELD  
CLEANOUT ADAPTOR  
THREAD x HUB

SIZE <b>A</b>	DWG. NO. 177 /10*	REV <b>0</b>
SCALE: 1:4	WEIGHT:	SHEET 1 OF 1