

J & S Valve®

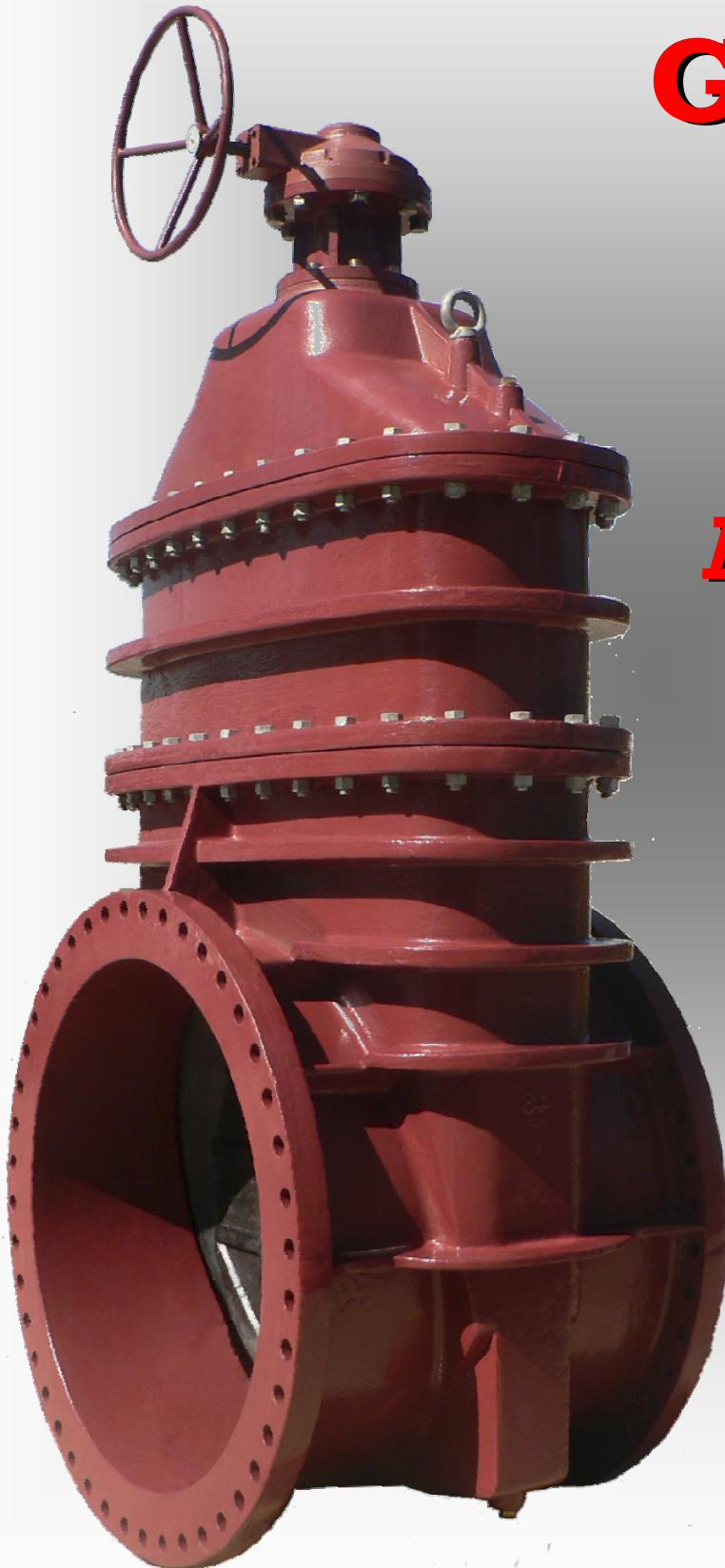
GATE VALVE

Resilient Seated

Solid Wedge

Size: 14" - 48"

AWWA C509



Resilient Seated Solid Wedge Gate Valve

SERIES 6000
SIZES: 14" - 48"



BODY

Ductile Iron

BONNET

Ductile Iron

GLAND

Ductile Iron

WEDGE

Ductile Iron

Encapsulated with EPDM Rubber

STEM

Stainless Steel

(Bronze Available)

STEM SEALS

EPDM O-rings

STEM NUT

Aluminum Bronze

BODY GASKET

EPDM

NUTS, BOLTS, WASHERS

Corrosive Resistant

COATING

Fusion Bonded Epoxy Coated

Inside & Outside per AWWA C550



AWWA C509

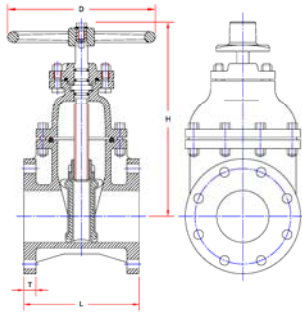
AWWA

Design and Materials Subject to Change Without Notice. Call for Verification and Any Updated Drawings

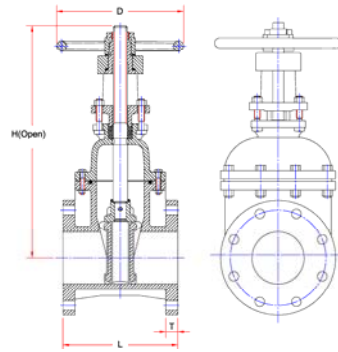
J & S Valve, Inc.

INSTALLATION DIMENSIONS

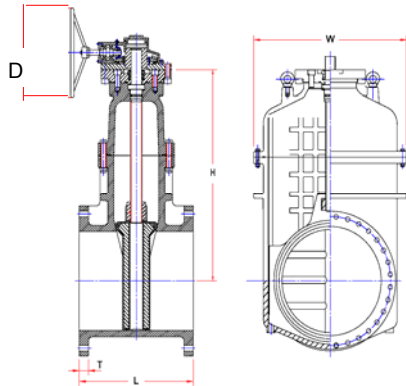
FXF, NRS
14" & 16"



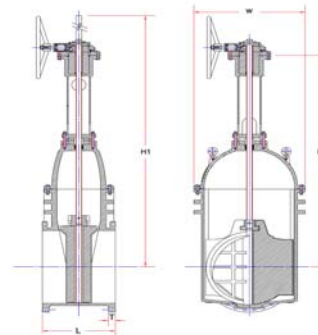
OS&Y
14" & 16"



FXF, BG
18" - 48"



OS&Y
18" - 48"



DIMENSIONS SERIES 6800 NRS GATE VALVE:

Size	Model	L	H	T	W	D
14"	6814	15"	34"	1 ³ / ₈ "	22 ¹ / ₄ "	21"
16"	6816	16"	40 ⁷ / ₈ "	1 ¹ / ₂ "	27 ¹ / ₄ "	21"
18"	6818	17"	44"	1 ¹ / ₂ "	27 ¹ / ₂ "	23 ⁵ / ₈ "
20"	6820	18"	52"	1 ³ / ₄ "	32"	23 ⁵ / ₈ "
24"	6824	20"	58"	1 ⁷ / ₈ "	40"	23 ⁵ / ₈ "
30"	6830	24"	70"	2 ¹ / ₈ "	47 ³ / ₄ "	23 ⁵ / ₈ "
36"	6836	28"	81"	2 ³ / ₈ "	54 ¹ / ₄ "	23 ⁵ / ₈ "
42"	6842	36"	86"	2 ⁵ / ₈ "	66 ³ / ₄ "	23 ⁵ / ₈ "
48"	6848	44"	96"	2 ³ / ₄ "	75 ¹ / ₂ "	23 ⁵ / ₈ "

See J&S Valve Publications or website for Size 2– 12", and 54" & Larger

DIMENSIONS SERIES 6700 OS&Y GATE VALVE:

Size	Model	L	H1(Open)	H2	T	W
14"	6714	15"	64"	49 ⁵ / ₈ "	1 ³ / ₈ "	22 ¹ / ₂ "
16"	6716	16"	75"	56 ¹ / ₄ "	1 ¹ / ₂ "	27 ¹ / ₂ "
18"	6718	17"	80 ³ / ₈ "	58 ⁵ / ₈ "	1 ⁵ / ₈ "	26 ¹ / ₂ "
20"	6720	18"	93 ¹ / ₂ "	67 ¹ / ₂ "	1 ³ / ₄ "	32"
24"	6724	20"	106 ¹ / ₄ "	76 ³ / ₈ "	1 ⁷ / ₈ "	39 ¹ / ₄ "
30"	6730	24"	101 ⁵ / ₈ "	66 ¹ / ₂ "	2 ¹ / ₈ "	47 ³ / ₄ "
36"	6736	28"	118 ¹ / ₈ "	76 ¹ / ₈ "	2 ³ / ₈ "	54 ¹ / ₂ "
42"	6742	36"	133 ⁷ / ₈ "	86"	2 ⁵ / ₈ "	66 ³ / ₄ "
48"	6748	44"	179 ¹ / ₂ "	96 ¹ / ₈ "	2 ³ / ₄ "	75 ¹ / ₂ "

See J&S Valve Publications or website for Size 2– 12", and 54" & Larger

Design and Materials Subject to Change Without Notice. Call for Verification and Any Updated Drawings

J & S Valve, Inc.

J & S Valve - BENEFITING CUSTOMERS!

Our experience working on major waterworks projects throughout the world sets us apart from other companies. We offer a full range of waterworks valves for all types of waterworks projects. As knowledgeable experienced valve professionals; our staff simplifies the process of valve selection and valve purchasing.

Valve manufacturers play an important role in the success of designing and building projects. The experienced staff at J&S Valve has the technical valve expertise with waterworks projects; collaboration with J&S Valve ensures success. We offer quality valves at competitive prices. We are a women business enterprise certified nationally and regionally so we offer the ability to meet a project diversity goals.



J & S Valve FACILITIES



QUALITY COMMITMENT



COMMITMENT TO QUALITY AND TECHNICAL ADVANCEMENT

J&S Valve is committed to providing the highest quality valves for longer service life and is recognized around the world for manufacturing the most robust valves on the market. Providing 100% testing, rather than random testing, sets J&S apart. All valves are tested in accordance to the American Water Works Standards. J&S Valve strives to provide superior customer service and to provide quality products at competitive prices. J&S is committed to complete customer satisfaction.

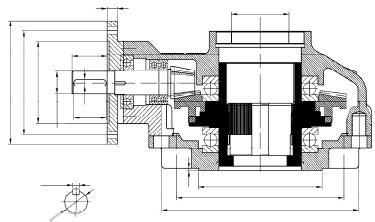


J&S VALVE FLOW TESTING LABORATORY

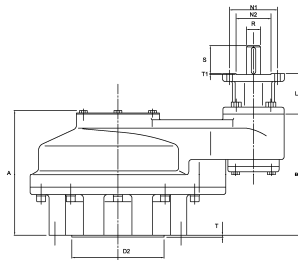


ACTUATION

BEVEL GEAR



SPUR GEAR



ELECTRIC ACTUATION



BEVEL GEARS:

- 90° intersecting shaft applications provide highly efficient operation
- The Coniflex® tooth form extends operating life and offers smoother, quieter operation
- Spiral bevel gears handle higher speeds and greater torque loads more smoothly and quietly than ever before
- Hardened or unhardened teeth offer versatility
- Bevel gears provide the flexibility of 1-1/2:1 to 18:1 ratios
- Fusion bonded epoxy coated in accordance with AWWA C550

SPUR GEARS:

- Used in parallel shaft applications
- High load capacity
- Higher contact ratio provides a smoother, quieter operation
- Fusion bonded epoxy coated in accordance with AWWA C550

ELECTRIC ACTUATORS:

- Electric Actuators can be easily adapted to the valve allowing the valve to become integrated with the system while also allowing for remote operation. The actuators are built in accordance with AWWA Standard C542 for Electric Actuators and are equipped with thermal overloads, torque switches and limit switches to protect the actuator and valve. J&S Valve prefers to supply “smart” actuators which offer features that are ideal for the digital world.

RESILIENT SEATED AWWA C509 GATE VALVE SPECIFICATION

SCOPE

- 1.1 This specification covers the design, manufacture, and testing of 14-inch through 48-inch AWWA C509 Resilient Seated Gate Valves suitable for cold working pressures of 200 psig.

STANDARDS AND APPROVALS

- 2.1 Valves are designed and manufactured in accordance with the America Water Works Association AWWA C509.
- 2.2 Valves are tested in accordance with Testing Section 5.1 of American Water Works Association AWWA C509.

CONNECTIONS

- 3.1 Valves shall be provided with flanges in accordance with ANSI B16.1, Class 125 flanges. or Class 250 flanges.

DESIGN

- 4.1 Valves shall be non-rising stem or outside screw and yoke type.
- 4.2 Valves shall be manufactured with thick-walled ductile iron bodies and bonnets in accordance with AWWA C509 Table 4.
- 4.3 Design of the stuffing box shall permit re-packing underline pressure.
- 4.4 Valve castings shall be marked with the requirements of AWWA C509.

MATERIALS

- 5.1 Valves shall be manufactured with a ductile iron body, bonnet, and wedge. The wedge shall be encapsulated with EPDM rubber.

- 5.2 Valves 30" through 48" shall have 300 series stainless steel track on both sides of the valve body to maintain a smooth operating surface between the rubber encapsulated wedge and the valve body.

- 5.3 Valves shall be manufactured with EPDM gaskets and o-rings.

- 5.4 NRS valves shall be manufactured with a triple o-ring stem seals constructed of EPDM.

- 5.5 OS&Y valves shall be manufactured with multiple ring packing and stuffing box.

- 5.6 Valve stems shall be manufactured of stainless steel.

- 5.7 Valve body and bonnet fasteners shall be manufactured of stainless steel.

COATINGS

- 6.1 Valve internal and external coatings shall be Fusion Bonded Epoxy Coated.

- 6.2 Valve internal and external coatings shall be in accordance with AWWA C550.

MANUFACTURER

- 7.1 Valves shall be hydrostatically tested in accordance AWWA C509 and shall be ANSI NSF-61 Certified. When requested, the manufacturer shall provide test certificates, dimensional drawings, parts list drawings, and operation and maintenance manuals.

- 7.2 Valves shall be Series 6000 manufactured by J&S Valve, Phone: 281-324-3990; or preapproved equal.

J & S Valve®

Improving the Industry Standard!

Giving More to the End Users!

J & S VALVE manufactures Gate Valves which "Improve the Industry Standards". The American Water Works Association (AWWA) Standards C509 establishes the minimum design and testing requirements for gate valves. Other gate valve manufacturers strive to design their valve as close to the minimum as possible and still be in compliance with the AWWA standards. J&S manufactures with materials that exceed the minimum set out by the AWWA standards.

The AWWA C509 Standard (the Standard for Resilient Gate Valves) states the minimum thickness of the body and bonnet and states that the valve can be made of cast grey iron or ductile iron. J & S Valve improves the standard by exceeding the minimum thickness stated in C509 and manufacturing cast components of ductile iron (Including the body, bonnet, wedge, seal plate, and operating nut). The tensile strength of the J&S cast ductile iron is 65,000 psi with a 12% elongation property. The tensile strength of most cast grey iron is 30,000 psi with less than 1% elongation.

Our Commitment is to provide a higher quality gate valve to the water works industry is why we use a higher strength materials than the minimum required by the AWWA standards. J&S Resilient Seated Gate Valve materials include using large diameter stainless steel stem, a thicker aluminum bronze stem nut, fusion bonded epoxy coatings inside and outside, corrosive resistant bolts, and EPDM rubber components. J&S give the customers a stronger more robust, extra heavy duty, more reliable and long lasting gate valve. In addition, J&S offers the most experience in production of 72" Resilient Seated Gate Valves in the world. J&S maintain a finished goods inventory of valves 2" - 48" to service our customers like no other valve manufacturer. J&S has the most complete line of AWWA Resilient Seated Gate Valves as well as Metal Seated Gate Valves in the world. Manufacturing both Non Rising Stem (NRS) and Outside Screw and Yoke (OS&Y) in sizes range from 2" to 108".

Install Reliability

Install J&S Valve

CORPORATE OFFICE:

2201 Main St., Ste. 400-9
Dallas, TX 75201
Ph: (972) 875-9400

PRODUCTION OPERATIONS:

2323 1st Street
Huffman, TX 77336
Ph: (281) 324-3990

DISTRIBUTION CENTER:

5537 I-45, South
Ennis, TX 75119
Ph: (281) 324-3990

www.JandSvalve.com
sales@jandsvalve.com

