

J & S Valve®

CHECK VALVE

Ball Check Valve

Swing Check Valve

Wafer Check Valve



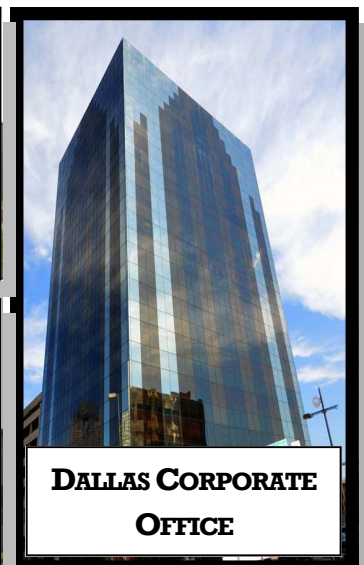
J & S Valve - BENEFITING CUSTOMERS!

Our experience working on major waterworks projects throughout the world sets us apart from other companies. We offer a full range of waterworks valves for all types of waterworks projects. As knowledgeable experienced valve professionals; our staff simplifies the process of valve selection and valve purchasing.

Manufacturers/Suppliers play an important role in the success of designing and building projects. The experienced staff at J&S Valve has the technical valve expertise with waterworks projects; collaboration with us can ensure success. We offer quality valves at competitive prices. We are a women business enterprise that is certified nationally and regionally and can assist with meeting project diversity goals.



J & S Valve FACILITIES



J & S Valve, Inc.

FEATURES & BENEFITS



**WAFER CHECK VALVE
SERIES 9400**

DESIGN FEATURES SERIES 9400:

Body:

Ductile Iron A536

Body Seat:

Ductile Iron A536

Disc:

Stainless Steel

**Wafer Style/ANSI B16.1
Class 125 Flanged
Sizes: 2"-12"**

AWWA C550:

Fusion Bonded Epoxy
Coating Inside/Out

Options:

- ♦ Lever and Weight

DESIGN FEATURES SERIES 9200:

Ball:

Aluminum EPDM Coated

Body:

Ductile Iron A536

Cover:

Ductile Iron A536

Hardware:

Stainless Steel 304

AWWA C508

Sizes: 2"-12"

AWWA C550:

Fusion Bonded Epoxy
Coating Inside/Out

**BALL CHECK VALVE
SERIES 9200**



FEATURES & BENEFITS



**SWING CHECK VALVE
SERIES 9000**

DESIGN FEATURES SERIES 9000:

Body:

Ductile Iron A536

Body Seat:

ASTM B62 Bronze

Disc:

Ductile Iron A536

Disc Seat:

ASTM B62 Bronze

Cover:

Ductile Iron A536

Gland:

Ductile Iron A536

Packing:

V-Type EPDM

AWWA C508

ANSI B16.1 Class 125

Flanged

Sizes: 2"-12"

Vertical or Horizontal
Installation

200PSI Working Pressure

Testing per AWWA C508

AWWA C550:

Fusion Bonded Epoxy
Coating Inside/Out

Options:

- ♦ Lever and Weight
- ♦ Lever and Spring

DESIGN FEATURES SERIES 9300:

Body:

Stainless Steel

Body Seat:

Stainless Steel

Disc:

Stainless Steel

Disc Seat:

Stainless Steel

Wafer Style/ANSI B16.1

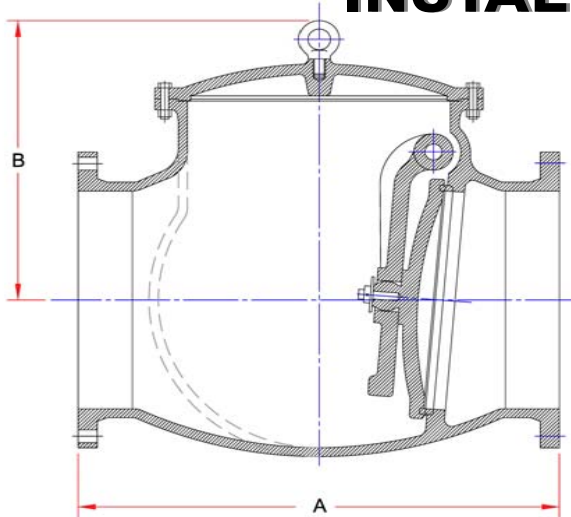
Class 125 Flanged

Sizes: 2"-12"

STAINLESS STEEL CHECK VALVE SERIES 9300



INSTALLATION DIMENSIONS

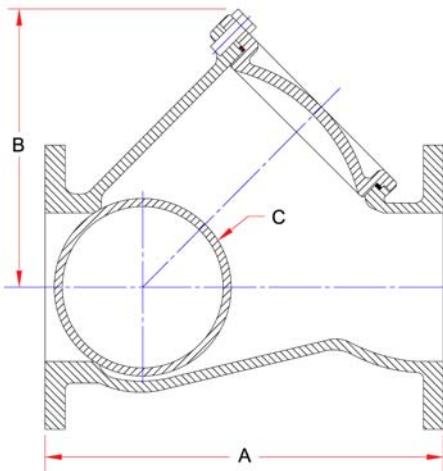


SWING CHECK VALVE SERIES 9000

DIMENSIONS SERIES 9000 SWING CHECK:

Size	2"	2½"	3"	4"	6"	8"	10"	12"	14"	16"
Model	9002	9025	9003	9004	9006	9008	9010	9012	9014	9016
A	8"	8.5"	9.4"	11.4"	14"	19.4"	24.4"	27.5"	30.9"	35.9"
B	4.7"	5.3"	5.5"	6.6"	8.46"	10.5"	12"	13.5"	17.7"	20.4"

BALL CHECK VALVE SERIES 9200

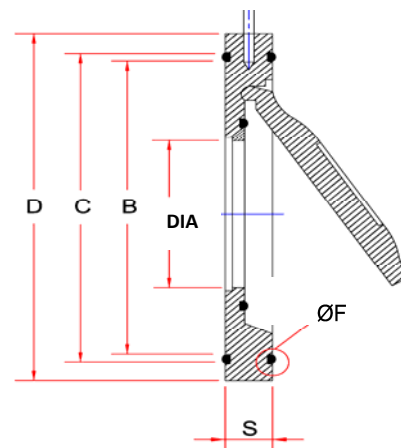
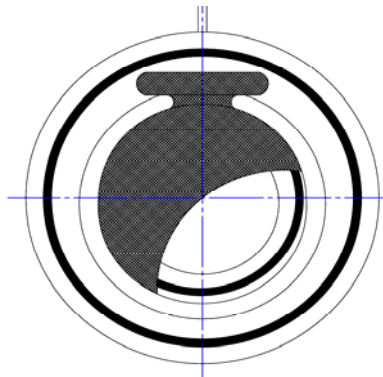
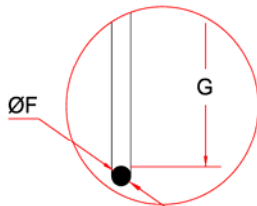


DIMENSIONS SERIES 9200 BALL CHECK:

Size	1½"	2"	2½"	3"	4"	6"	8"	10"	12"	14"
Model	9215	9202	9225	9203	9204	9206	9208	9210	9212	9214
A	7"	8"	9.4"	10.2"	11.8"	15.7"	19.6"	23.6"	27.5"	31.4"
B	3.9"	4.9"	5.5"	7"	8"	11"	13.9"	16.5"	18.8"	22.8"
C	2"	2.4"	3"	3.7"	5"	7"	10"	12.5"	14.5"	16.2"

INSTALLATION DIMENSIONS

STAINLESS STEEL CHECK VALVE SERIES 9300

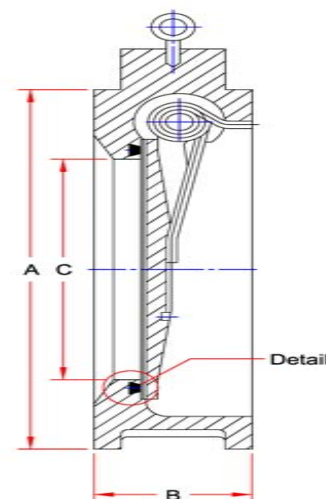
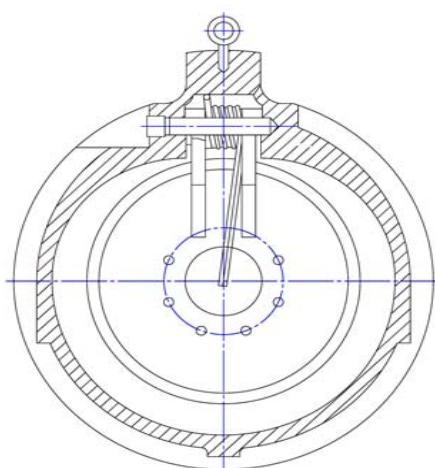
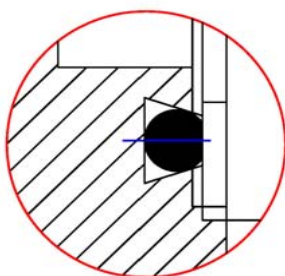


DIMENSIONS SERIES 9300 SS WAFER CHECK:

Size	2"	2½"	3"	4"	6"	8"	10"	12"	14"
Model	9302	9325	9303	9304	9306	9308	9310	9312	9314
S	0.5"	0.5"	0.6"	0.7"	0.78"	0.86"	1.10"	1.12"	1.4"
D	4.29"	5"	5.1"	6.4"	8.6"	10.8"	12.9"	14.9"	17.3"
DIA.	1.2"	1.5"	2.1"	2.7"	4.3"	6.4"	7.5"	9.2"	10.6"
C	3.85"	4.26"	5.0"	5.81"	7.94"	10.0"	12.0"	14.0"	15.8"
B	3.62"	4.04"	4.83"	5.51"	7.56"	9.57"	11.5"	13.5"	15.2"
G	3.44"	3.87"	4.66"	5.33"	7.36"	9.40"	11.2"	13.2"	15.2"
F	0.13"	0.13"	.013"	0.13"	0.19"	0.19"	0.23"	0.23"	0.31"

WAFER CHECK VALVE SERIES 9400

SEAT DETAIL



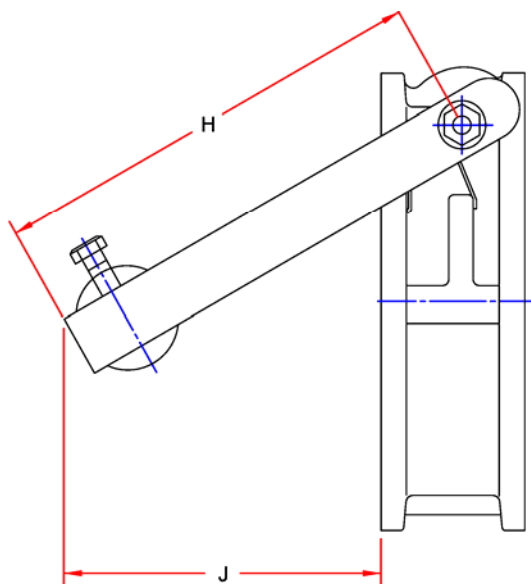
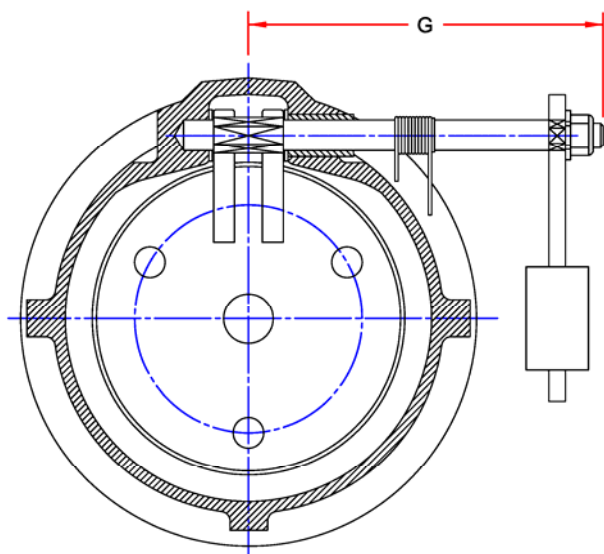
DIMENSIONS SERIES 9400 WAFER CHECK:

Size	2"	2½"	3"	4"	6"	8"	10"	12"
Model	9402	9425	9403	9404	9406	9408	9410	9412
A	4.00"	4.75"	5.25"	6.77"	8.66"	10.90"	13.26"	16.00"
B	1.75"	1.88"	1.88"	2.24"	2.75"	2.87"	3.11"	3.38"
C	1.29"	1.85"	2.00"	3.00"	4.76"	6.43"	7.63"	9.5"

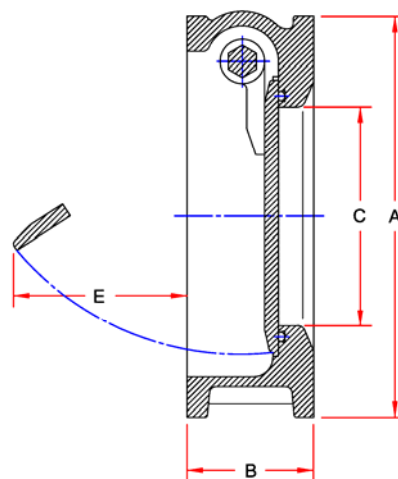
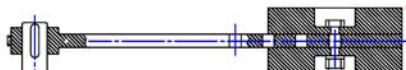
Design and Materials Subject to Change Without Notice. Call for Verification and Any Updated Drawings

J & S Valve', Inc.

INSTALLATION DIMENSIONS



TOP VIEW OF LEVER & WEIGHT



WAFER CHECK VALVE SERIES 9400L

DIMENSIONS SERIES 9400 LEVER & WEIGHT:

Size	2"	2½"	3"	4"	6"	8"	10"	12"
Model	9402L	9425L	9403L	9404L	9406L	9408L	9408L	9412L
A	4.25"	4.875"	5.375"	6.875"	8.75"	11.00"	13.375"	16.125"
B	1.75"	1.875"	2.375"	2.25"	2.75"	2.875"	3.125"	3.375"
C	1.31"	1.875"	2.375"	3.00"	4.75"	6.437"	7.625"	9.50"
E	1.125"	1.187"	2.187"	2.937"	4.50"	6.125"	7.375"	8.75"
G	4.75"	5.125"	5.75"	6.375"	7.75"	9.125"	10.375"	12.25"
H	6.50"	7.50"	8.50"	8.05"	8.375"	9.375"	10.375"	12.00"
J	5.125"	5.875"	6.75"	6.75"	6.625"	7.50"	8.125"	9.375"

Design and Materials Subject to Change Without Notice. Call for Verification and Any Updated Drawings

J & S Valve, Inc.



J & S Valve®

Improving the Industry Standard!

J&S Valve shows its commitment to providing quality products by manufacturing with the highest grade materials and testing 100% of its valves (rather than random testing). J&S is a leader in the Waterworks Industry. We provide products and services that constantly meet and exceed our customers' needs as they relate to quality, performance, dependability, operation, and delivery.

J&S Valve PROMOTES:

- An environment of trust characterized by integrity and honest communication
- Mutual respect for and appreciation of diverse perspectives and ideas
- A commitment to innovation and creativity to drive quality, value and sustainability

Install Reliability

Install J&S Valve

CORPORATE OFFICE:

2201 Main St., Ste. 400-9
Dallas, TX 75201
Ph: (972) 875-9400

PRODUCTION OPERATIONS:

2323 1st Street
Huffman, TX 77336
Ph: (281) 324-3990

DISTRIBUTION CENTER:

5537 I-45, South
Ennis, TX 75119
Ph: (281) 324-3990

www.JandSvalve.com
sales@jandsvalve.com

www.JandSvalve.com

