

J & S Valve®

GATE VALVE

Metal Seated

Solid Wedge

Size: 54" & Larger



Metal Seated Solid Wedge Gate Valve

SERIES 3000 **FULL NOMINAL PIPE SIZE PORT AREA** **SIZES: 54" & LARGER**



BODY

Ductile Iron

BONNET

Ductile Iron

WEDGE

Ductile Iron

STEM

Stainless Steel, Standard
(Other Materials, Available)

STEM NUT

Aluminum Bronze

SEAT RINGS

Bronze

SPUR GEAR

Vertical Installations

BEVEL GEAR

Horizontal Installations

ROLLERS, TRACKS, & SCRAPER

Standard on Both Sides of Body
Vertical or Horizontal Installations

NUTS, BOLTS, WASHERS

Corrosive Resistant

STEM NUT

Aluminum Bronze

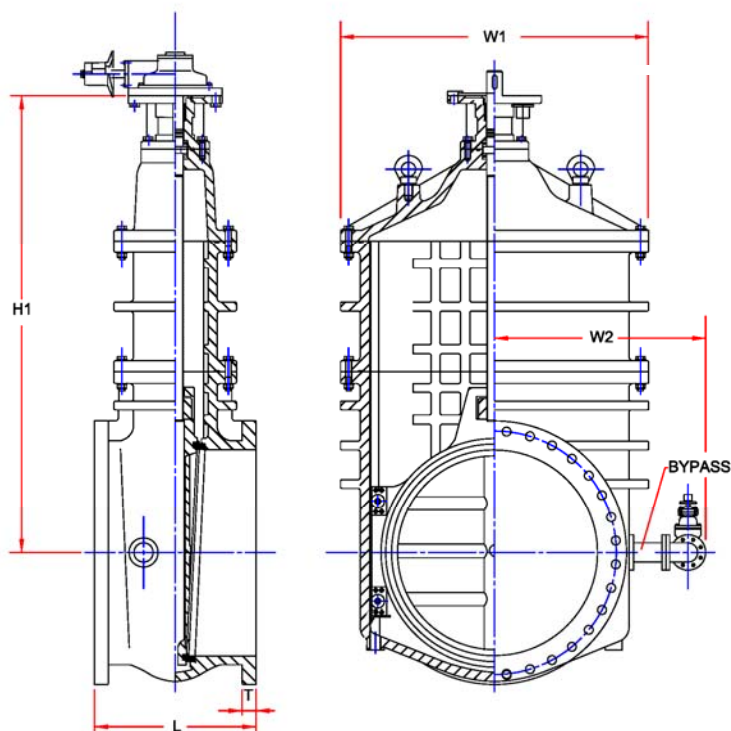
BY-PASS

AWWA C500 or C509 Gate Valve

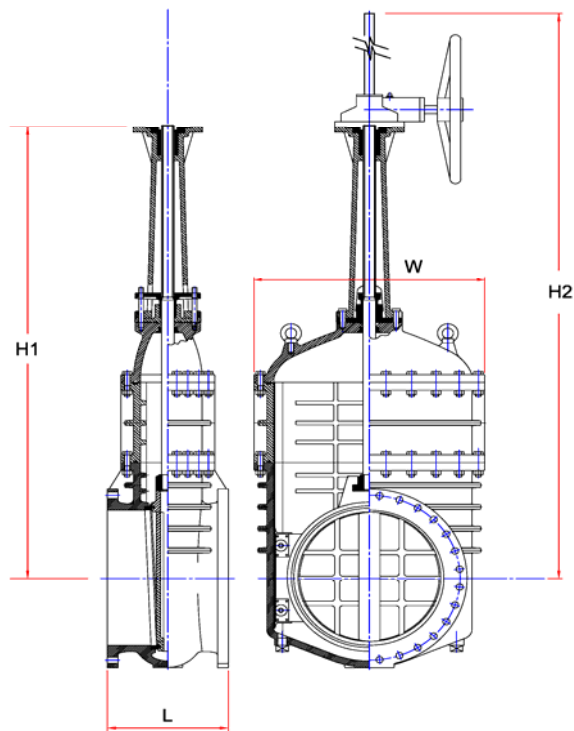
COATING

NSF-61 2-Part Epoxy Coating

INSTALLATION DIMENSIONS



NRS



OS&Y

DIMENSIONS SERIES 3800 NRS GATE VALVE:

Size	Model	L	H1	W2	W1
54"	3854	37"	107"	43 $\frac{1}{8}$ "	77 $\frac{1}{2}$ "
60"	3860	37"	117"	47 $\frac{1}{2}$ "	83 $\frac{7}{8}$ "
66"	3866	37"	126"	52"	90 $\frac{1}{8}$ "

DIMENSIONS SERIES 3700 OS&Y GATE VALVE:

Size	Model	L	H1	H2	W
54"	3754	37 $\frac{1}{4}$ "	169 $\frac{1}{4}$ "	224 $\frac{3}{8}$ "	79"
60"	3760	37 $\frac{1}{4}$ "	187"	250"	86"
66"	3766	37 $\frac{1}{4}$ "	205 $\frac{3}{4}$ "	271 $\frac{5}{8}$ "	100"

See J&S Valve Publications or website for Size 2"- 12", and 14" & 48

QUALITY COMMITMENT

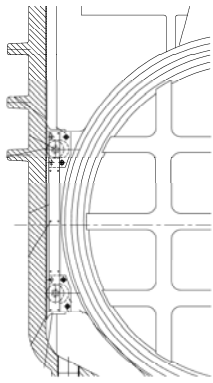


COMMITMENT TO QUALITY AND TECHNICAL ADVANCEMENT

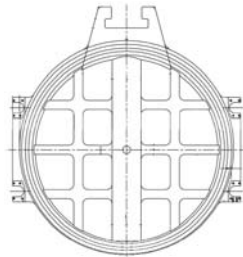
J&S Valve is committed to providing the highest quality valves for longer service life and is recognized around the world for manufacturing the most robust valves on the market. Providing 100% testing, rather than random testing, sets J&S apart. All valves are tested in accordance to the American Water Works Standards. J&S Valve strives to provide superior customer service and to provide quality products at competitive prices. J&S is committed to complete customer satisfaction.



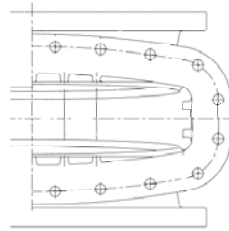
ROLLERS, TRACKS & SCRAPERS (RTS)



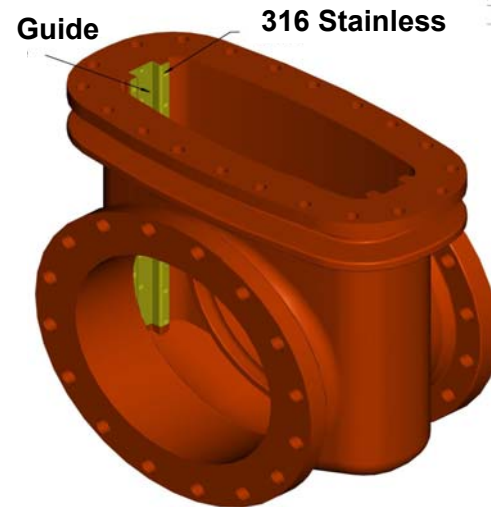
Rollers/Scrapers/Wedge



Wedge



Top View Body



RTS Standard on Both Sides of Body
(For Vertical or Horizontal Installations)

ACTUATION

BEVEL GEARS:



- 90° intersecting shaft applications provide highly efficient operation
- The Coniflex® tooth form extends operating life and offers smoother, quieter operation
- Spiral bevel gears handle higher speeds and greater torque loads more smoothly and quietly than ever before
- Hardened or unhardened teeth offer versatility
- Bevel gears provide the flexibility of 1-1/2:1 to 18:1 ratios
- Fusion bonded epoxy coated in accordance with AWWA C550

SPUR GEARS:



- Used in parallel shaft applications
- High load capacity
- Higher contact ratio provides a smoother, quieter operation
- Fusion bonded epoxy coated in accordance with AWWA C550

ELECTRIC ACTUATORS:



- Electric Actuators can be easily adapted to the valve allowing the valve to become integrated with the system while also allowing for remote operation. The actuators are built in accordance with AWWA Standard C542 for Electric Actuators and are equipped with thermal overloads, torque switches and limit switches to protect the actuator and valve. J&S Valve prefers to supply "smart" actuators which offer features that are ideal for the digital world.

J & S Valve - BENEFITING CUSTOMERS!

Our experience working on major waterworks projects throughout the world sets us apart from other companies. We offer a full range of waterworks valves for all types of waterworks projects. As knowledgeable experienced valve professionals; our staff simplifies the process of valve selection and valve purchasing.

Manufacturers play an important role in the success of designing and building projects. The experienced staff at J&S Valve has the technical valve expertise with waterworks projects; collaboration with us can ensure success. We offer quality valves at competitive prices. We are a women business enterprise that is certified nationally and regionally and can assist with meeting project diversity goals.



J & S Valve FACILITIES



DALLAS AREA



HOUSTON AREA



DALLAS CORPORATE OFFICE

METAL SEATED GATE VALVE SPECIFICATION

SCOPE

- 1.1 This specification covers the design, manufacturing, and testing of 54-inch and large Metal Seated Gate Valves suitable for water and wastewater service for cold water working pressure of 150 psig.

STANDARDS AND APPROVALS

- 2.1 Valves are designed and manufactured in accordance with the America Water Works Association AWWA C500, where applicable.
- 2.2 Valves are tested in accordance with Testing Section 5.1 of American Water Works Association AWWA C500, when applicable.

CONNECTIONS

- 3.1 Valves shall be provided with flanges in accordance with ANSI B16.1, Class 125 iron flanges or Class 250.

DESIGN

- 4.1 Valves are offered in non-rising stem and outside screw and yoke type.
- 4.2 Valve bodies, bonnets, wedge shall be ductile iron. Accurately machined bronze seating rings secured in the valve bodies.
- 4.3 Valve wedge shall have bronze seating rings, machined and scraped, if necessary, to seat truly flat against body seating rings.
- 4.7 Valve castings shall be marked with the requirements of AWWA C500 and MSS-SP25.
- 4.10 Valves shall have tongue-and-groove guides. The guides are on the sides of the gate and in the body to keep the gate centered between the seats throughout its length of travel.
- 4.11 Valves shall have rollers, tracks, and a self-adjusting scraper.
- 4.12 Valves shall be supplied with a by-pass valve as specified by AWWA C500, when applicable

MATERIALS

- 5.1 Metal Seated Gate Valves are supplied with ductile iron bodies, bonnets, wedges, and hand wheels.
- 5.2 Gate Valves are supplied with bronze trim.
- 5.3 Metal Seated Gate Valves are provided with Garlock braided PTFE non-asbestos packaging.
- 5.4 Stuffing box glands are bronze; gland followers are ductile iron.
- 5.5 Gate valve stem is Stainless Steel to prevent breaking.

- 5.6 Body and bonnet fasteners are made of rustproof material having the physical properties of ASTM A30.
- 5.7 Valve shall have tongue-and-groove guides that are manufactured with 316 stainless steel.
- 5.8 All valves to be installed vertical or horizontal shall have rollers and tracks that are manufactured with 316 stainless steel.
- 5.9 Valves shall have a self-adjusting scraper that is manufactured of bronze on both sides of the wedge
- 5.10 By-Pass valves shall be non-rising stem gate valves which are in compliance with AWWA C509 or AWWA C500; open left (counterclockwise) unless otherwise requested. By-pass valves shall be provided with a 2" operating nut or hand wheel as requested.

COATINGS

- 6.1 Internal and external coatings shall be 2-Part Epoxy NSF-61 approved.
- 6.2 Internal and external coatings shall be in accordance with AWWA C550.

MANUAL GEARING

- 7.1 All Gate Valves 54-inch and larger shall have bevel gearing or spur gearing depending on the application requirements. Bevel Gears or Spur Gears can be adapted to any size valve upon request.

OPTIONS

- 8.1 Extension Stems
- 8.2 Position Indicators
- 8.3 Valve Boxes
- 8.4 Indicator Posts
- 8.5 Electric Motor Operators
- 8.6 Limit Switches

MANUFACTURER

- 9.1 All valves shall be hydrostatically and seat tested per AWWA C500, when applicable to structural integrity. When requested, the manufacturer shall provide test certificates, dimensional drawings, parts list drawings, and operation and maintenance manuals.
- 9.2 Metal Seated Solid Wedge Gate Valve Series 3000 shall be those manufactured by J&S Valve, Inc. 281-324-3990 or preapproved equal.

J & S Valve

Improving the Industry Standard!

J&S Valve shows its commitment to providing quality products by manufacturing with the highest grade materials and testing 100% of its valves (rather than random testing). J&S is a leader in the Waterworks Industry. We provide products and services that constantly meet and exceed our customers' needs as they relate to quality, performance, dependability, operation, and delivery.

J&S Valve PROMOTES:

- An environment of trust characterized by integrity and honest communication
- Mutual respect for and appreciation of diverse perspectives and ideas
- A commitment to innovation and creativity to drive quality, value and sustainability

Install Reliability Install J&S Valve

CORPORATE OFFICE:

2201 Main St., Ste. 400-9
Dallas, TX 75201
Ph: (972) 875-9400

PRODUCTION OPERATIONS:

2323 1st Street
Huffman, TX 77336
Ph: (281) 324-3990

DISTRIBUTION CENTER:

5537 I-45, South
Ennis, TX 75119
Ph: (281) 324-3990

www.JandSvalve.com
sales@jandsvalve.com

